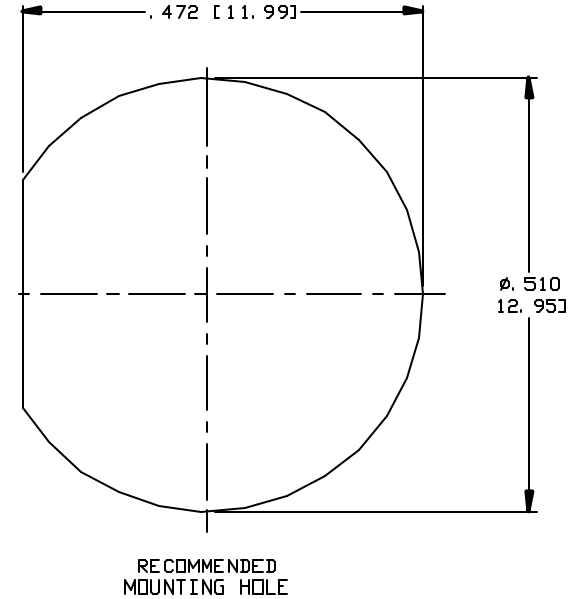
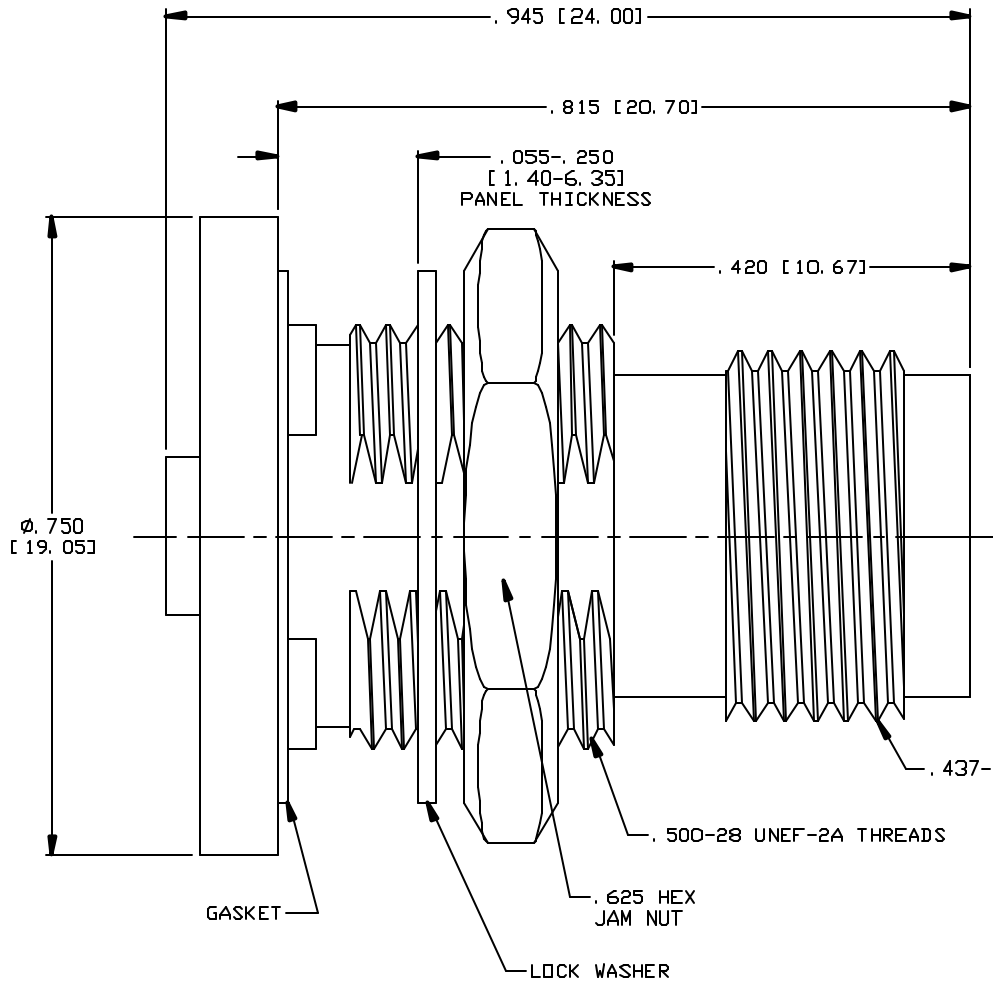


CAD DRAWING - NO MANUAL REVISIONS



NOTES:

1. DESIGN AND INTERFACE TNC PER I. D. S. -41, AND MMCX PER I. D. S. -33.
2. MARKED: 3341-1115-00N.
3. JAM NUT, LOCK WASHER & 'O'-RING SHIPPED LOOSE.
4. IP67 WHEN IN MATED OR UN-MATED CONDITION.

PARTS	MATERIALS	FINISH
BODY & JAM NUT	BRASS PER ASTM-B-16	NICKEL PER DQ-N-290, CLASS 1, GRADE G
CONTACT	BE. CU. ASTM-B-196	.000030 GOLD
LOCK WASHER	BRONZE ASTM-B-591	NICKEL PER DQ-N-290, CLASS 1, GRADE G
INSULATOR	TEFLON, ASTM-D-1710	
O-RINGS	SILICON RUBBER, PER ASTM-D-2000	

A	PER ECN 11431	08/31/12	MS
REV.	DESCRIPTION	DATE	APPR.

PALCO CONNECTOR

22 GREAT HILL RD., NAUGATUCK, CT 06770

UNLESS OTHERWISE SPECIFIED, PALCO WORKMANSHIP STANDARDS APPLY

TOLERANCES ON DECIMALS: XX ± .01 .XXX ± .005 ANGLES ±1/2° 32

DIMENSIONS IN INCHES OR (METRIC) DO NOT SCALE PRINTS

CATALOG ITEM

DRAWN JEM	CHECKED MS	ENGINEER JEM	APPROVED MS	FSCM 58167
		DESCRIPTION REAR MOUNT ADAPTOR TNC JACK TO MMCX JACK		
DATE 04/28/12	DRAWING NO. 3341-1115-00		PLATING OPT. N	

INTERFACE DESIGN STANDARD		 22 GREAT HILL ROAD, NAUGATUCK, CT. 06770 PHONE: (203) 729-9090 FAX: (203) 723-1794	REV	DESCRIPTION	DATE	APPR
IDS-33			C	PER ECN 4954	06/23/99	HN
PAGE 1 OF 2	DATE: 02/28/94		D	PER ECN 8629	08/23/06	JM
DRAWN: JEM	APPROVED: HN		E	PER ECN 9615	11/07/08	JEM
		F	PER ECN 10914	03/30/11	JEM	

DESCRIPTION: 33 SERIES, MMCX, PER BS EN 122340.

MECHANICAL

MATERIALS

BODIES AND MALE CONTACTS - BRASS PER ASTM-B-16.
 FERRULES AND CAPS - BRASS PER ASTM-B-16.
 INSULATORS - TEFLON (PTFE) PER ASTM-D-1710.
 FEMALE CONTACTS AND CLIP RING - BERYLLIUM COPPER PER ASTM-B-196.

FINISHES (ADD LETTER TO END OF PART NUMBER)

GOLD PER MIL-G-45204.
 COPPER PER MIL-C-14550.
 NICKEL PER QQ-N-290.
 BODIES AND CONTACTS: "A" - .000050 MIN. GOLD OVER NICKEL.
 BODIES AND CONTACTS: "B" - .000030 MIN. GOLD OVER NICKEL.
 OTHER METAL PARTS:
 GOLD OR NICKEL PLATED TO MEET THE ENVIRONMENTAL REQUIREMENTS.

MATING CHARACTERISTICS

ENGAGEMENT: 3.5 LBS. MAX.
 DISENGAGEMENT: 1.3 TO 3.4 LBS.
 DURABILITY: 500 CYCLES.
 CONFORMS TO CECC 22 340 STANDARDS.

ELECTRICALS

IMPEDANCE: 50 OHMS.
 FREQUENCY RANGE: DC TO 6 GHz.
 VOLTAGE RATING: 170 VOLTS RMS.
 INSULATION RESISTANCE: 5000 MEGOHMS MIN.
 TEMPERATURE RATING: -65°C TO +165°C
 DMV: 500 VOLTS RMS.
 RF LEAKAGE: 55 dB MIN. @ 1 GHz.
 CONTACT RESISTANCE: CENTER CONTACT: 5.0 MILLIOHMS.
 OUTER CONTACT: 3.0 MILLIOHMS.
 VSWR: 1.20 TYP. FOR STRAIGHT CONNECTORS.
 1.30 TYP. FOR RIGHT ANGLE CONNECTORS.
 INSERTION LOSS: 0.2 dB MAX. @ 1 GHz.

ENVIRONMENTAL

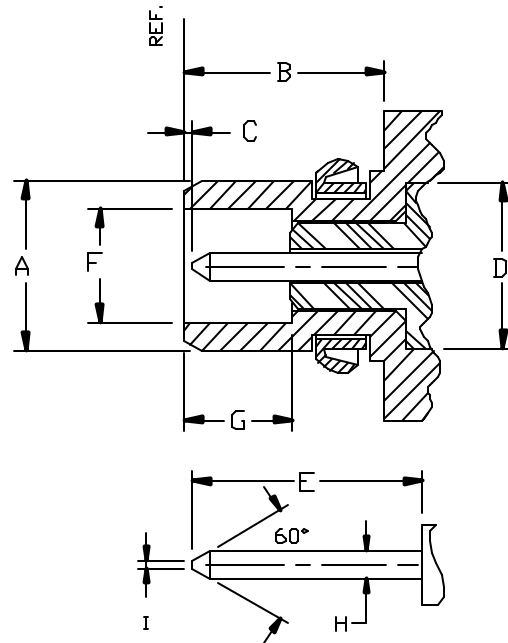
VIBRATION: MIL-STD-202, METHOD 204, TEST CONDITION D.
 SHOCK: MIL-STD-202, METHOD 213, TEST CONDITION A.
 THERMAL SHOCK: MIL-STD-202, METHOD 107, TEST CONDITION C.
 CORROSION: MIL-STD-202, METHOD 101, TEST CONDITION B.

REV	DESCRIPTION	DATE	APPR
C	PER ECN 4954	06/23/99	HN
D	PER ECN 8629	08/23/06	JM
E	PER ECN 9615	11/07/08	JEM
F	PER ECN 10914	03/30/11	JEM

DESCRIPTION: 33 SERIES, MMCX, PER BS EN 122340.

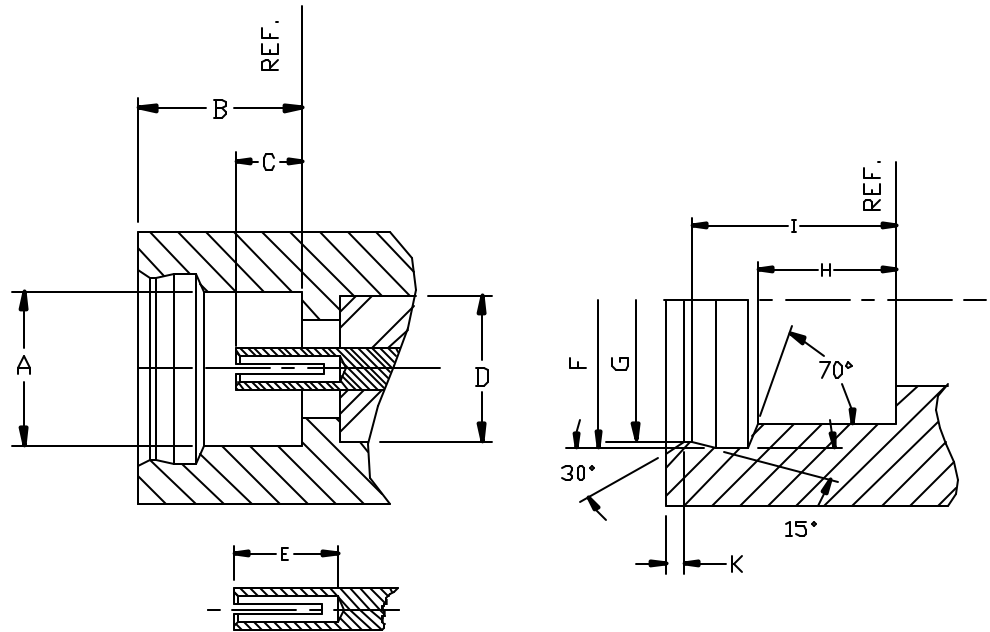
PLUG


	MIN.	MAX.
A	—	∅.094
B	.106	—
C	.000	.010
D	∅.091	∅.093
E	—	.124
F	∅.062	∅.064
G	.057	—
H	∅.015	∅.017
I	—	∅.008



JACK

	MIN.	MAX.
A	∅.095	—
B	.102	—
C	.035	.047
D	∅.091	∅.093
E	.055	—
F	∅.118	∅.120
G	∅.113	∅.114
H	.062	.064
I	.091	.092
K	—	.009



INTERFACE DESIGN STANDARD		 22 GREAT HILL ROAD, NAUGATUCK, CT. 06770 PHONE: (203) 729-9090 FAX: (203) 723-1794	REV	DESCRIPTION	DATE	APPR
IDS-41			A	PER ECN 5421	03/21/00	HN
PAGE 1 OF 3	DATE: 02/28/94		B	PER ECN 7427	05/07/04	JM
DRAWN: EK	APPROVED: JEM		C	PER ECN 9024	08/06/07	JEM
		D	PER ECN 10095	11/30/09	JEM	

DESCRIPTION: TNC SERIES

MECHANICAL

MATERIALS

BODIES, FITTINGS, MALE CONTACTS - BRASS PER ASTM-B-16.
INSULATORS - TEFLON (PTFE) PER ASTM-D-1457.
CONTACTS, FEMALE AND OUTER - BERYLLIUM COPPER PER ASTM-B-196.
GASKETS - SILICONE RUBBER PER ZZ-R-765.

FINISHES (ADD LETTER TO END OF PART NUMBER)

BODIES, OUTER CONTACTS, FITTINGS - SILVER PER QQ-S-365 (S SUFFIX)
NICKEL - PER QQ-N-290 (N SUFFIX)
CONTACTS - GOLD PLATED .000050 MIN. PER MIL-G-45204 OVER
.00010 MIN. OF COPPER PER MIL-C-14550.
OTHER METAL PARTS - SILVER OR NICKEL PLATED TO MEET THE ENVIRONMENTAL
REQUIREMENTS.

MATING CHARACTERISTICS

PER MIL-C-39012.
FORCE TO ENGAGE /DISENGAGE- TORQUE - 2 IN-LBS. MAX.
COUPLING NUT RETENTION - AXIAL FORCE 100 LBS. MIN.,
TORQUE - 15 IN-LBS. MIN.
DURABILITY: 500 CYCLES PER MIL-C-39012.

ELECTRICALS

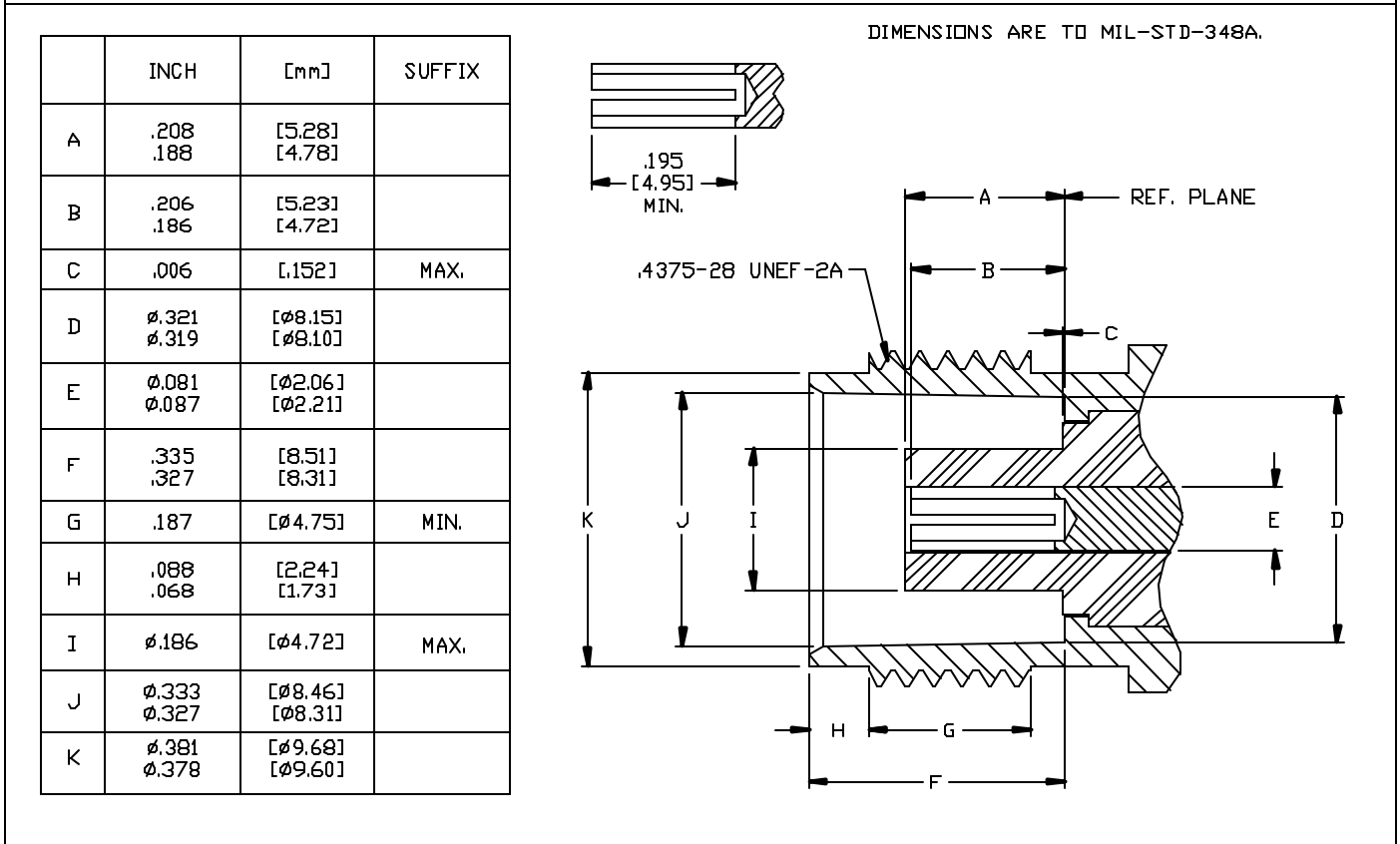
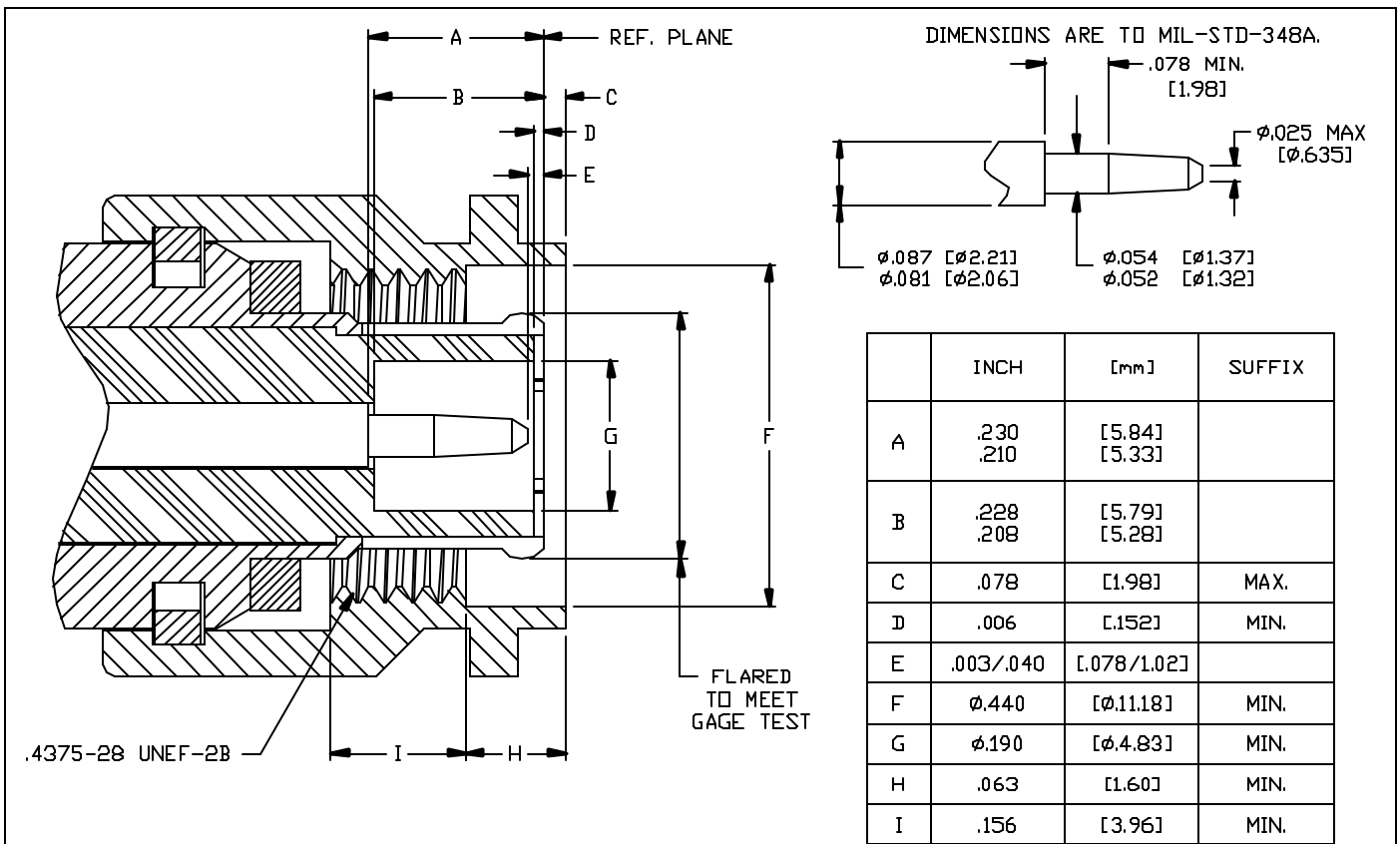
IMPEDANCE: 50 OHMS.
FREQUENCY RANGE: DC TO 11 GHz (CONNECTOR PERFORMANCE ONLY;
DEPENDENT OF CABLE).
INSULATION RESISTANCE: 5000 MEGOHMS, MIN..
TEMPERATURE RATING: -65°C TO +165°C.
DWV: 1500 VOLTS AT SEA LEVEL.
CONTACT RESISTANCE: CENTER CONTACT - 1.5 MILLIOHMS;
OUTER CONTACT - 0.2 MILLIOHMS.
VSWR: 1.30 MAX.
R.F. LEAKAGE: -60 dB MIN. FROM 2 TO 3 GHz.
INSERTION LOSS: 0.18 dB MAX. AT 9 GHz.

ENVIRONMENTAL

VIBRATION: MIL-STD-202, METHOD 204, TEST CONDITION B.
SHOCK: MIL-STD-202, METHOD 213, TEST CONDITION B.
THERMAL SHOCK: MIL-STD-202, METHOD 107, TEST CONDITION B @ 85°C.
CORROSION: MIL-STD-202, METHOD 101, TEST CONDITION B.
MOISTURE RESISTANCE: MIL-STD-202, METHOD 106,
NO MEASUREMENT AT HIGH HUMIDITY.

REV	DESCRIPTION	DATE	APPR
A	PER ECN 5421	03/21/00	HN
B	PER ECN 7427	05/07/04	JM
C	PER ECN 9024	08/06/07	JEM
D	PER ECN 10095	11/30/09	JEM

DESCRIPTION: TNC SERIES



INTERFACE DESIGN STANDARD		PALEO CONNECTOR 22 GREAT HILL ROAD, NAUGATUCK, CT. 06770 PHONE: (203) 729-9090 FAX: (203) 723-1794	REV	DESCRIPTION	DATE	APPR
IDS-41			A	PER ECN 5421	03/21/00	HN
PAGE 3 OF 3	DATE: 02/28/94		B	PER ECN 7427	05/07/04	JM
DRAWN: JEM	APPROVED: HN		C	PER ECN 9024	08/06/07	JEM
		D	PER ECN 10095	11/30/09	JEM	

DESCRIPTION: TNC SERIES

DIMENSIONS ARE TO MIL-STD-348A.

