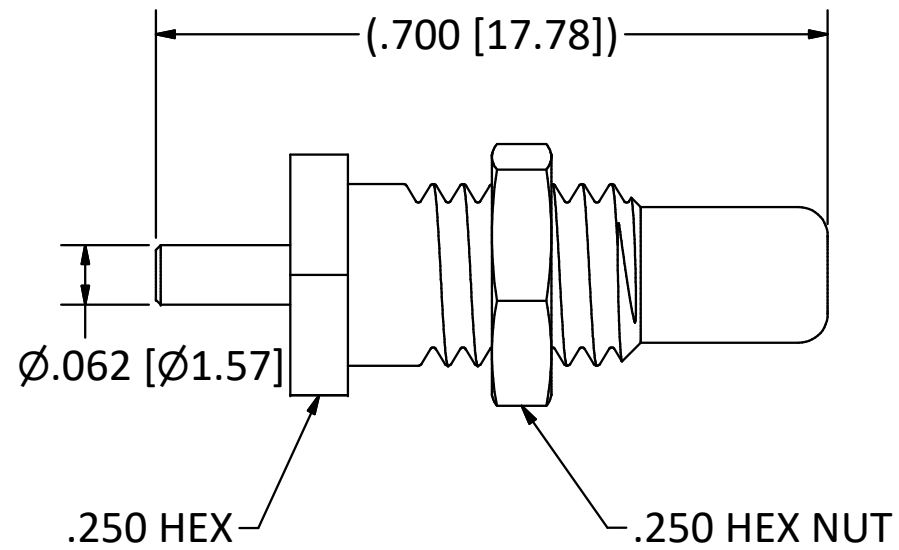
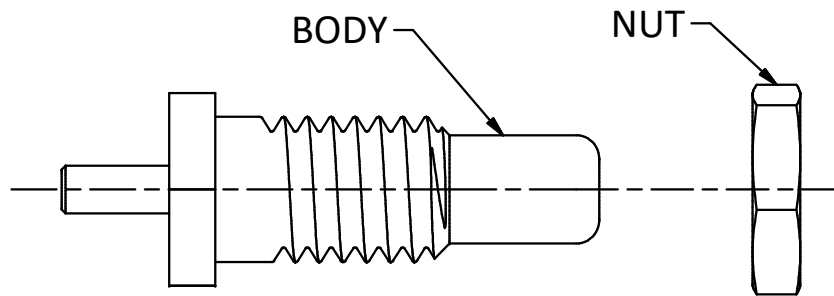


4

3

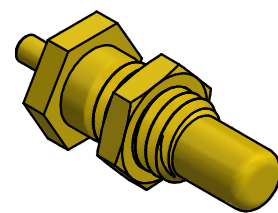
2

1



NOTES:

- 1. NUT SHIPPED LOOSE.
- 2. MAGNETISM: <1.00000 mu.



SCALE 2.5 : 1

G	PER ECN 9404	05/22/08	JEM
F	PER ECN 5163	08/02/99	HN
E	PER ECN 3865	04/25/97	HN
D	PER ECN 2930	06/02/95	HN
REV.	DESCRIPTION	DATE	BY

This drawing embodies a proprietary design of The Phoenix Company of Chicago, Inc., Naugatuck, CT 06770. All design, manufacturing, reproduction, use, sale, and other rights regarding the same are expressly reserved. The information in this drawing may be covered completely or in part by patents and/or patents pending.

WARNING - THIS DOCUMENT CONTAINS TECHNICAL DATA WHOSE EXPORT IS RESTRICTED BY THE ARMS EXPORT CONTROL ACT (TITLE 22, U.S.C., SEC 2751, ET. SEQ.) OR THE EXPORT ADMINISTRATION ACT OF 1979, AS AMENDED, TITLE 50, U.S.C., APP 2401 ET SEQ. VIOLATIONS OF THESE EXPORT LAWS ARE SUBJECT TO SEVERE CRIMINAL PENALTIES. DISSEMINATE IN ACCORDANCE WITH PROVISIONS OF DOD DIRECTIVE 5230.25.

Filename: ver2\Autodesk Inventor Data Base\Assemblies\Specials\02088-CU.idw

UNLESS OTHERWISE SPECIFIED, PHOENIX WORKMANSHIP STANDARDS APPLY DIMENSIONS IN INCHES OR (METRIC)

DO NOT SCALE PRINTS
TOLERANCES ARE:
FRACTIONS: ± 1/64
DECIMALS: .XX ± .01
.XXX ± .003
ANGLES: ± 1/2°

32√

APPROVALS	DATE
DRAWN KJT	10/25/1993
CHECKED HN	10/25/1993
QA	
MFG	
ENGINEER JSV	10/25/1993
APPROVED HN	10/25/1993

The **PHOENIX** Company of Chicago, Inc.

22 GREAT HILL RD., NAUGATUCK, CT 06770
WWW.PHOENIXOFCHICAGO.COM
PHONE: (800) 323-9562 FAX:(630) 206-1801

TITLE
NON-MAGNETIC HIGH POWER PLUG

SIZE B	FSCM 58167	DWG NO 02088	REV G	PLATING OPT.
SCALE 5 : 1	F.S.R. #	SHEET 1	OF 1	

4

3

2

1