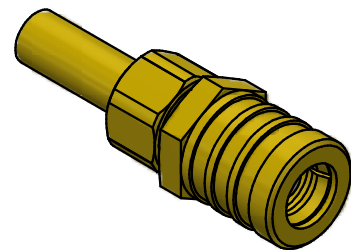


NOTES:

1. SPECIFICATIONS PER IDS-09J.
2. CONTACT, CRIMP NUT, FERRULE, INSULATOR, AND WEDGE SHIPPED LOOSE.
3. ACCOMMODATES RG-178 OR RG-196 CABLE.
4. CRIMP USING .105 HEX DIE (M22520/5-03).
5. MAGNETISM: <math><1.00000\text{ mu}</math>.



SCALE 2.5 : 1

G	ECN 11127	9/15/11	JEM
F	ECN 8899	4/17/07	JEM
REV.	DESCRIPTION	DATE	BY

This drawing embodies a proprietary design of The Phoenix Company of Chicago, Inc., Naugatuck, CT 06770. All design, manufacturing, reproduction, use, sale, and other rights regarding the same are expressly reserved. The information in this drawing may be covered completely or in part by patents and/or patents pending.

WARNING - THIS DOCUMENT CONTAINS TECHNICAL DATA WHOSE EXPORT IS RESTRICTED BY THE ARMS EXPORT CONTROL ACT (TITLE 22, U.S.C., SEC 2751, ET. SEQ.) OR THE EXPORT ADMINISTRATION ACT OF 1979, AS AMENDED, TITLE 50, U.S.C., APP 2401 ET SEQ. VIOLATIONS OF THESE EXPORT LAWS ARE SUBJECT TO SEVERE CRIMINAL PENALTIES. DISSEMINATE IN ACCORDANCE WITH PROVISIONS OF DOD DIRECTIVE 5230.25.

Filename: ver2\Autodesk Inventor Data Base\Assemblies\09 Series\09-0800-0400J-CU.idw

UNLESS OTHERWISE SPECIFIED, PHOENIX WORKMANSHIP STANDARDS APPLY DIMENSIONS IN INCHES OR (METRIC)

DO NOT SCALE PRINTS  
TOLERANCES ARE:  
FRACTIONS:  $\pm 1/64$   
DECIMALS: .XX  $\pm .01$   
.XXX  $\pm .003$   
ANGLES:  $\pm 1/2^\circ$



	APPROVALS	DATE
DRAWN	EY	4/5/1966
CHECKED	HN	4/5/1966
QA		
MFG		
ENGINEER	DLD	4/5/1966
APPROVED	HN	4/5/1966

The **PHOENIX** Company of Chicago, Inc.

22 GREAT HILL RD., NAUGATUCK, CT 06770  
WWW.PHOENIXOFCHICAGO.COM  
PHONE: (800) 323-9562 FAX:(630) 206-1801

TITLE					
SMB PLUG, CRIMP/CLAMP TERMINATION					
SIZE	FSCM	DWG NO	REV	PLATING OPT.	
B	58167	<b>09-0800-0400J</b>	G		
SCALE	5 : 1	F.S.R. #	SHEET 1 OF 1		