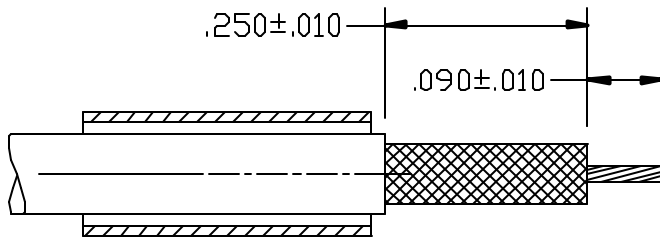
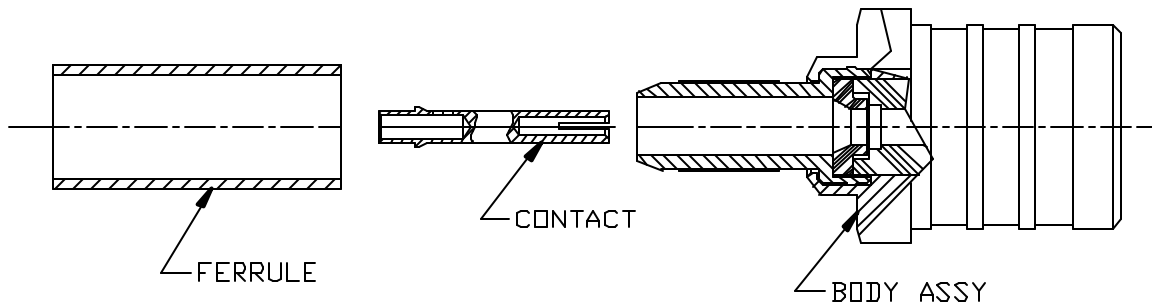


CABLE ASSEMBLY PROCEDURE	
P/N	09-0800-0673
PAGE 1 OF 1	DATE: 01/31/96
DRAWN: DL	APPROVED: HN
USE WITH RG316, RG188/U CABLES	

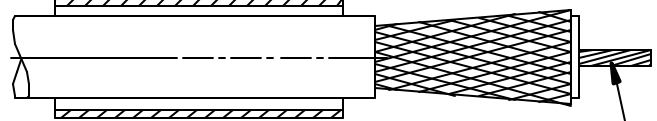
PALEO
CONNECTOR

22 GREAT HILL ROAD, NAUGATUCK, CT. 06770
PHONE: (203) 729-9090 FAX: (203) 723-1794

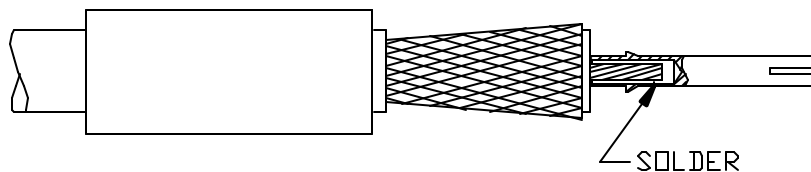
REV	DESCRIPTION	DATE	APPR
A	PER ECN 3321	01/31/96	JM
F	PER ECN 6090	11/17/00	HN
G	PER ECN 7093	06/23/03	HN
H	PER ECN 11090	08/18/11	JEM



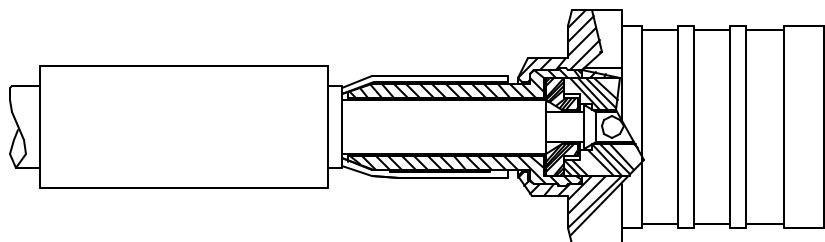
STEP 1
TRIM CABLE TO DIMENSION SHOWN.
SLIDE FERRULE OVER CABLE.



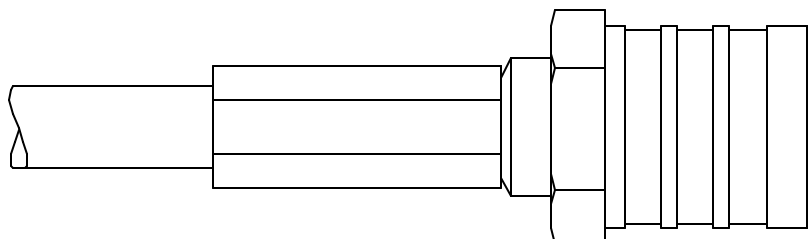
STEP 2
TIN CENTER CONDUCTOR. FLARE
BRAID BY ROTATING DIELECTRIC.



STEP 3
SLIDE CONTACT OVER CENTER CONDUCTOR. BUTT CONTACT AGAINST CABLE
DIELECTRIC. SOLDER THROUGH SIDE HOLE.



STEP 4
INSERT CONNECTOR BETWEEN CABLE BRAID AND DIELECTRIC. PRESS UNTIL
CONTACT SNAPS INSIDE CONNECTOR.



STEP 5
SLIDE FERRULE OVER BRAID. CRIMP USING .128 HEX DIE. (M22520/5-03).