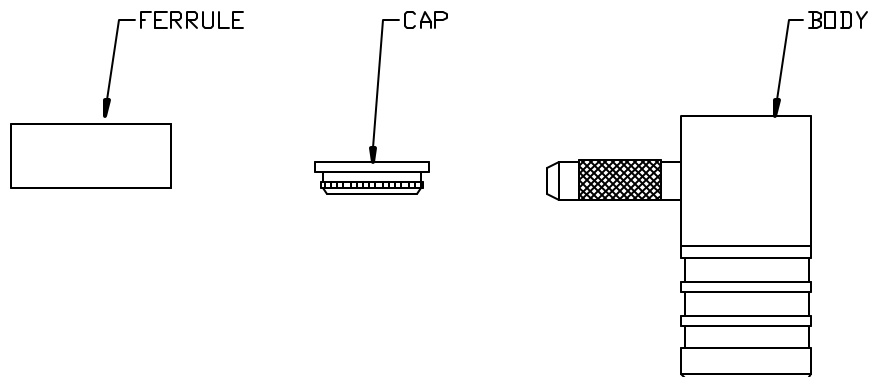


CABLE ASSEMBLY PROCEDURE	
P/N	09-2800-0400
PAGE 1 OF 1	DATE: 11/19/98
DRAWN: MY	APPROVED: HN
FOR USE WITH RG178 OR SIMILAR CABLES	

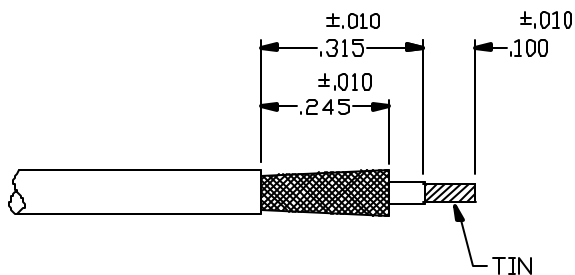
**PALEO**  
**CONNECTOR**

22 GREAT HILL ROAD, NAUGATUCK, CT. 06770  
PHONE: (203) 729-9090 FAX: (203) 723-1794

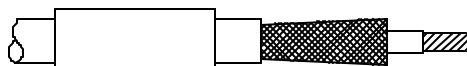
REV	DESCRIPTION	DATE	APPR
F	REL. ECN 4799	11/19/98	HN



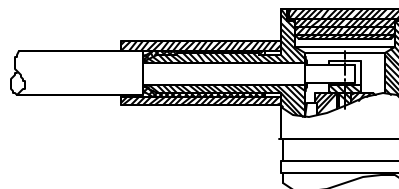
**STEP 1**  
TRIM CABLE TO DIMENSIONS SHOWN. TIN CENTER CONDUCTOR.



**STEP 2**  
SLIDE FERRULE OVER CABLE. ROTATE DIELECTRIC TO FLAIR BRAID.



**STEP 3**  
SLIDE CABLE INTO BODY WITH BRAID OVER WEDGE. SLIDE FERRULE UP AGAINST BODY AND CRIMP USING .105 HEX DIE (M22520/5-03).



**STEP 4**  
SOLDER CENTER CONDUCTOR TO CENTER CONTACT AND CLEAN SOLDER JOINT. PRESS CAP INTO BODY.

