
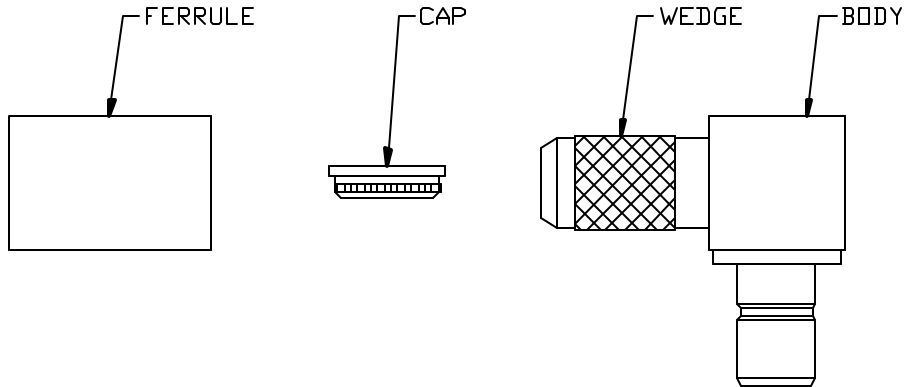
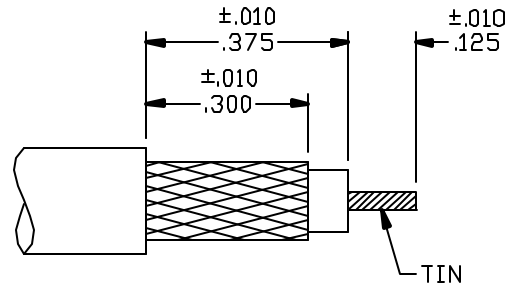


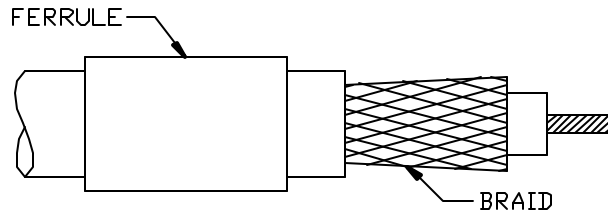
CABLE ASSEMBLY PROCEDURE		 22 GREAT HILL ROAD, NAUGATUCK, CT. 06770 PHONE: (203) 729-9090 FAX: (203) 723-1794	REV	DESCRIPTION	DATE	APPR
P/N	09-3800-1081		A	REL. ECN 5033	04/26/99	HN
PAGE 1 OF 1	DATE: 04/26/99		B	REL. ECN 5069	05/19/99	HN
DRAWN: MY	APPROVED: HN		C	REL. ECN 6255	01/02/02	HN
FOR USE WITH GORE CXA 8005 CABLE			D	PER ECN 6836	12/23/02	HN



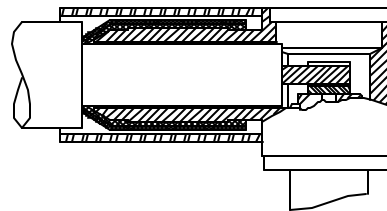
STEP 1
 TRIM CABLE TO DIMENSIONS SHOWN. TIN CENTER CONDUCTOR.



STEP 2
 SLIDE FERRULE OVER CABLE, PUSH BRAID BACK AND REMOVE TAPE. COMB BRAID BACK TO ORIGINAL POSITION.



STEP 3
 SLIDE CABLE INTO BODY WITH BRAID OVER WEDGE. SLIDE FERRULE UP AGAINST BODY AND CRIMP USING .178 HEX DIE (M22520/5-05).



STEP 4
 SOLDER CENTER CONDUCTOR TO CENTER CONTACT AND CLEAN SOLDER JOINT. PRESS CAP INTO BODY.

