

4

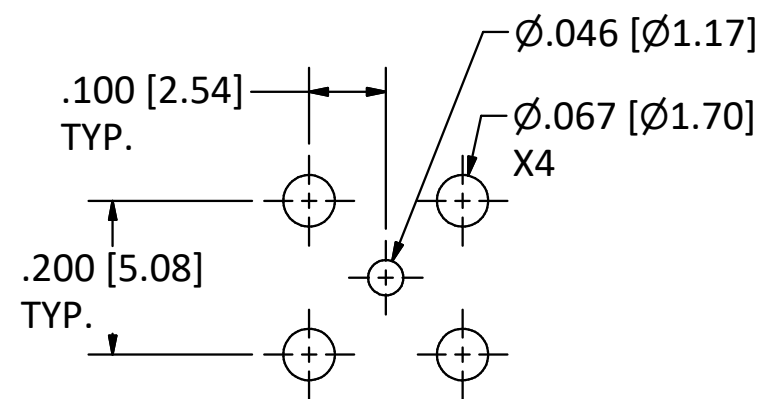
3

2

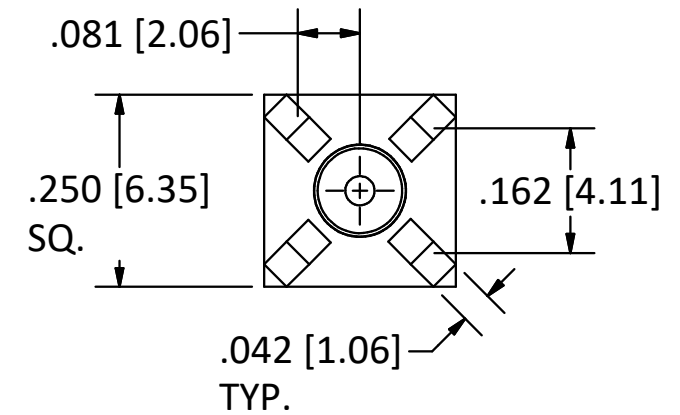
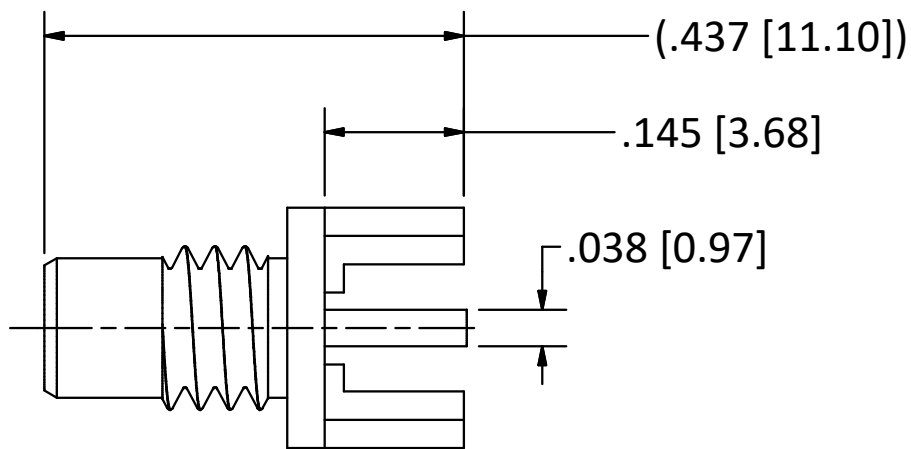
1

B

B

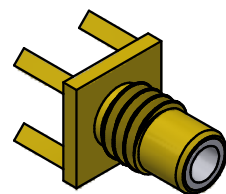


RECOMMENDED MOUNTING HOLES



NOTES:

- 1. SPECIFICATIONS PER IDS-10J.
- 2. MAGNETISM: <1.00000 mu.



SCALE 2.5: 1

4

3

2

1

A

A

REV.	DESCRIPTION	DATE	BY
G	PER ECN 12135	3/25/15	JEM
F	PER ECN 10202	2/23/10	JEM
E	PER ECN 7253	1/15/04	HN
D	PER ECN 6741	9/25/02	HN
C	PER ECN 6274	10/10/01	HN

This drawing embodies a proprietary design of The Phoenix Company of Chicago, Inc., Naugatuck, CT 06770. All design, manufacturing, reproduction, use, sale, and other rights regarding the same are expressly reserved. The information in this drawing may be covered completely or in part by patents and/or patents pending.

WARNING - THIS DOCUMENT CONTAINS TECHNICAL DATA WHOSE EXPORT IS RESTRICTED BY THE ARMS EXPORT CONTROL ACT (TITLE 22, U.S.C., SEC 2751, ET. SEQ.) OR THE EXPORT ADMINISTRATION ACT OF 1979, AS AMENDED, TITLE 50, U.S.C., APP 2401 ET SEQ. VIOLATIONS OF THESE EXPORT LAWS ARE SUBJECT TO SEVERE CRIMINAL PENALTIES. DISSEMINATE IN ACCORDANCE WITH PROVISIONS OF DOD DIRECTIVE 5230.25.

Filename: ver2\Autodesk Inventor Data Base\Assemblies\10 Series\10-1450-04J-CU.idw

UNLESS OTHERWISE SPECIFIED, PHOENIX WORKMANSHIP STANDARDS APPLY DIMENSIONS IN INCHES OR (METRIC)

DO NOT SCALE PRINTS  
TOLERANCES ARE:  
FRACTIONS: ± 1/64  
DECIMALS: .XX ± .01  
.XXX ± .003  
ANGLES: ± 1/2°



APPROVALS	DATE
DRAWN JSV	10/17/2000
CHECKED HN	10/17/2000
QA	
MFG	
ENGINEER JSV	10/17/2000
APPROVED HN	10/17/2000

The **PHOENIX** Company of Chicago, Inc.

22 GREAT HILL RD., NAUGATUCK, CT 06770  
WWW.PHOENIXOFCHICAGO.COM  
PHONE: (800) 323-9562 FAX:(630) 206-1801

TITLE  
**SMC STRAIGHT JACK, PRINTED CIRCUIT MOUNT**

SIZE	FSCM	DWG NO	REV	PLATING OPT.
B	58167	<b>10-1450-04J</b>	G	
SCALE	5: 1	F.S.R. #	SHEET 1	OF 1