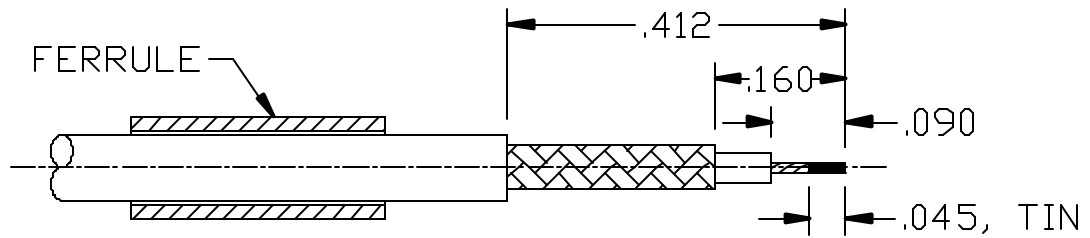
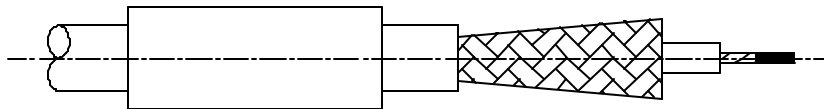


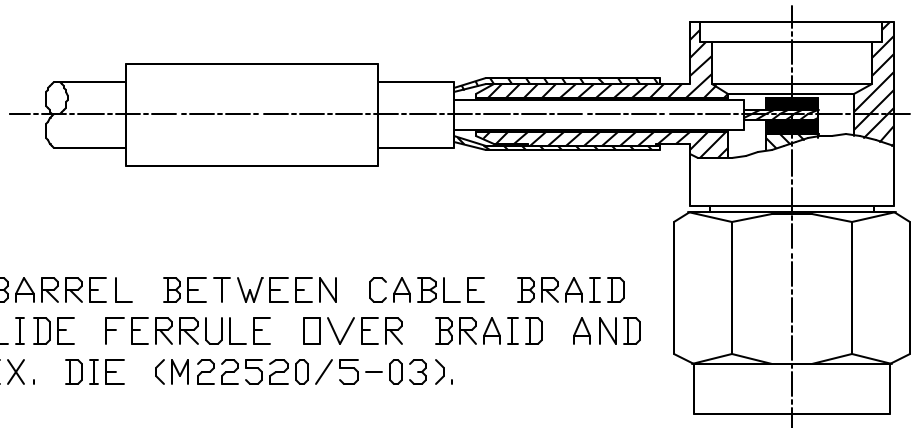
CABLE ASSEMBLY PROCEDURE		<b>PALEO</b> <b>CONNECTOR</b> 22 GREAT HILL ROAD, NAUGATUCK, CT. 06770 PHONE: (203) 729-9090 FAX: (203) 723-1794	REV	DESCRIPTION	DATE	APPR
P/N	10-2800-0670		J	PER ECN 6925	02/25/03	HN
PAGE 1 OF 1	DATE: 09/03/99		K	PER ECN 8008	05/27/05	JM
DRAWN: KJT	APPROVED: JEM		L	PER ECN 8673	09/25/06	JEM
FOR USE WITH RG-316 CABLE			M	PER ECN 10203	02/24/10	JEM



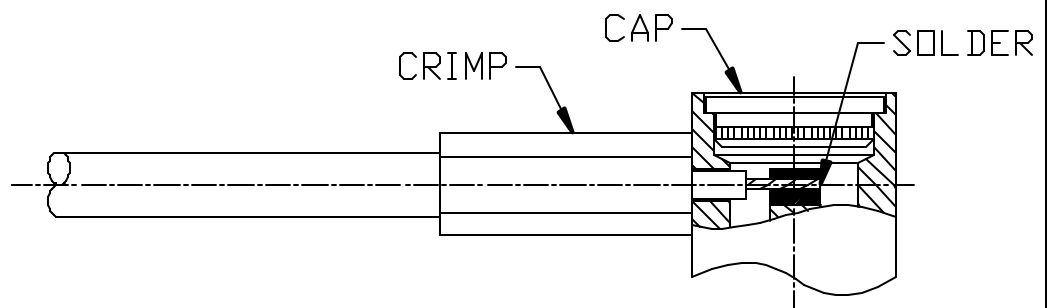
STEP 1:  
 TRIM CABLE TO DIMENSIONS SHOWN. TIN CENTER CONDUCTOR.  
 SLIDE FERRULE OVER CABLE.



STEP 2:  
 FLARE BRAID BY ROTATING DIELECTRIC.



STEP 3:  
 INSERT CONNECTOR BARREL BETWEEN CABLE BRAID  
 AND DIELECTRIC. SLIDE FERRULE OVER BRAID AND  
 CRIMP USING .128 HEX. DIE (M22520/5-03).



STEP 4:  
 SOLDER CENTER CONDUCTOR TO CENTER CONTACT.  
 PRESS CAP INTO HOLE.