

4

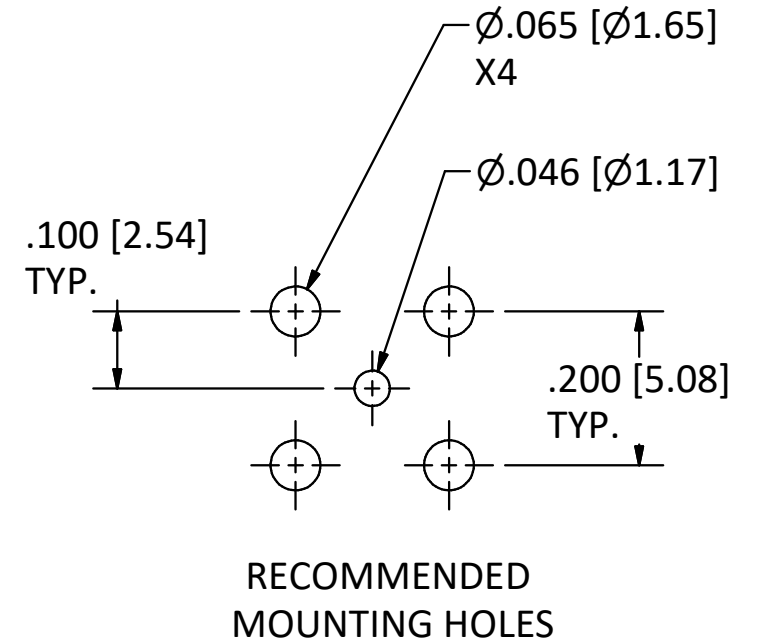
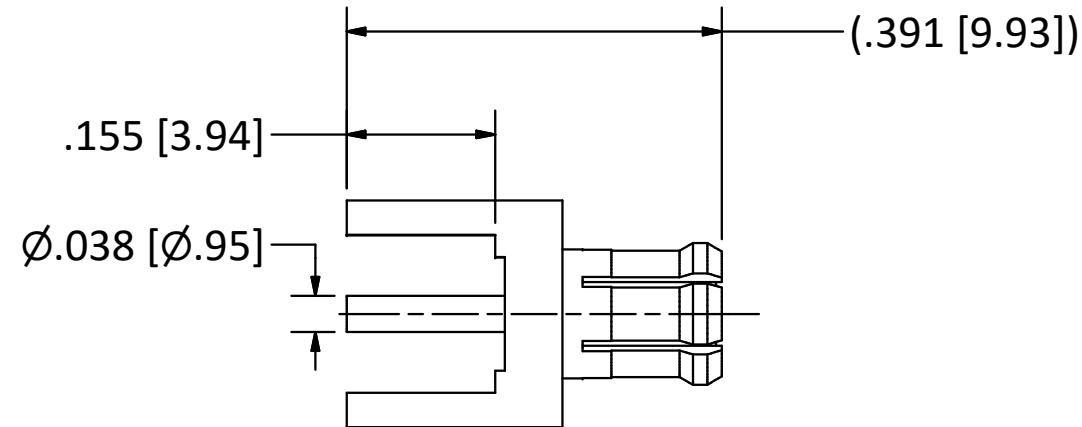
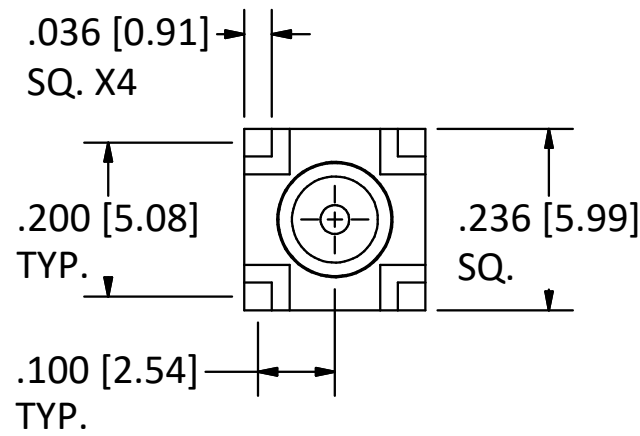
3

2

1

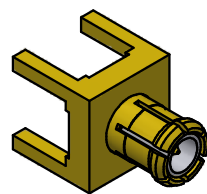
B

B



NOTES:

- 1. SPECIFICATIONS PER IDS-13J.
- 2. MAGNETISM: < 1.00000 mu.



SCALE 2.5:1

4

3

2

1

A

A

| | | | | | | | | | | | | |
|---|--|---|---------------------|--|---|---------------------|---|-----------------------|--------------------------------------|--|---------------------|--|
| <p>This drawing embodies a proprietary design of The Phoenix Company of Chicago, Inc., Naugatuck, CT 06770. All design, manufacturing, reproduction, use, sale, and other rights regarding the same are expressly reserved. The information in this drawing may be covered completely or in part by patents and/or patents pending.</p> | | | | <p>WARNING - THIS DOCUMENT CONTAINS TECHNICAL DATA WHOSE EXPORT IS RESTRICTED BY THE ARMS EXPORT CONTROL ACT (TITLE 22, U.S.C., SEC 2751, ET. SEQ.) OR THE EXPORT ADMINISTRATION ACT OF 1979, AS AMENDED, TITLE 50, U.S.C., APP 2401 ET SEQ. VIOLATIONS OF THESE EXPORT LAWS ARE SUBJECT TO SEVERE CRIMINAL PENALTIES. DISSEMINATE IN ACCORDANCE WITH PROVISIONS OF DOD DIRECTIVE 5230.25.</p> | | | <p>Filename: ver2\Autodesk Inventor Data Base\Assemblies\13 Series\13-0450-00J-CU.idw</p> | | | <p>The PHOENIX Company of Chicago, Inc. 22 GREAT HILL RD., NAUGATUCK, CT 06770 WWW.PHOENIXOFCHICAGO.COM PHONE: (800) 323-9562 FAX:(630) 206-1801</p> | | |
| | | | | | | | <p>UNLESS OTHERWISE SPECIFIED, PHOENIX WORKMANSHIP STANDARDS APPLY DIMENSIONS IN INCHES OR (METRIC)</p> | | <p>APPROVALS</p> | | | |
| <p>DO NOT SCALE PRINTS</p> | | <p>TOLERANCES ARE: FRACTIONS: ± 1/64 DECIMALS: .XX ± .01 .XXX ± .003 ANGLES: ± 1/2°</p> | <p>DRAWN LB</p> | <p>8/14/2008</p> | <p>TITLE MCX STRAIGHT PLUG, PRINTED CIRCUIT MOUNT</p> | | | | | | | |
| <p>PER ECN 9981 08/14/08 JEM</p> | | <p>CHECKED HN</p> | <p>8/14/2008</p> | <p>QA</p> | | | | | | | | |
| <p>PER ECN 79469 3/9/05 JM</p> | | <p>ENGINEER LB</p> | <p>8/14/2008</p> | <p>MFG</p> | | | | | | | | |
| <p>REV. DESCRIPTION DATE BY</p> | | <p>APPROVED HN</p> | <p>8/14/2008</p> | <p>SIZE B</p> | | | | <p>FSCM 58167</p> | <p>DWG NO 13-0450-00J</p> | <p>REV H</p> | <p>PLATING OPT.</p> | |
| | | | | <p>SCALE 5:1</p> | <p>F.S.R. #</p> | <p>SHEET 1 OF 1</p> | | | | | | |