

4

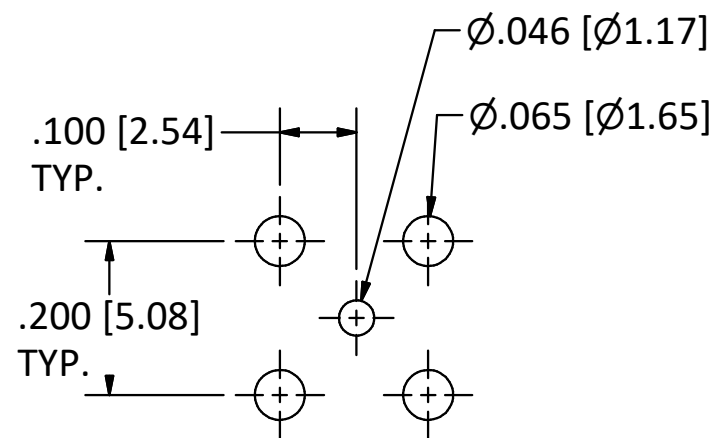
3

2

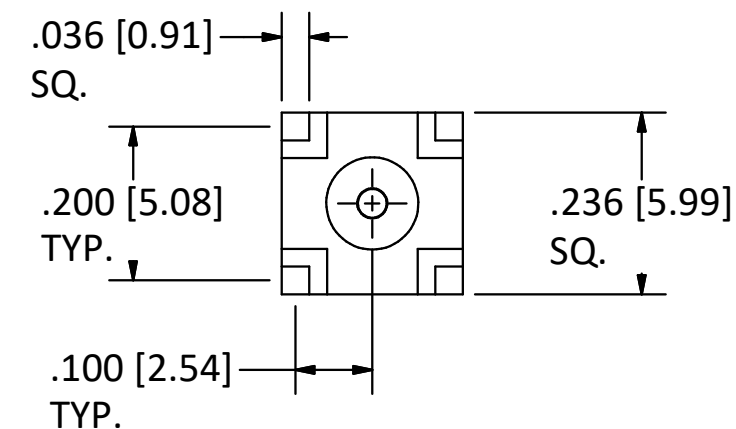
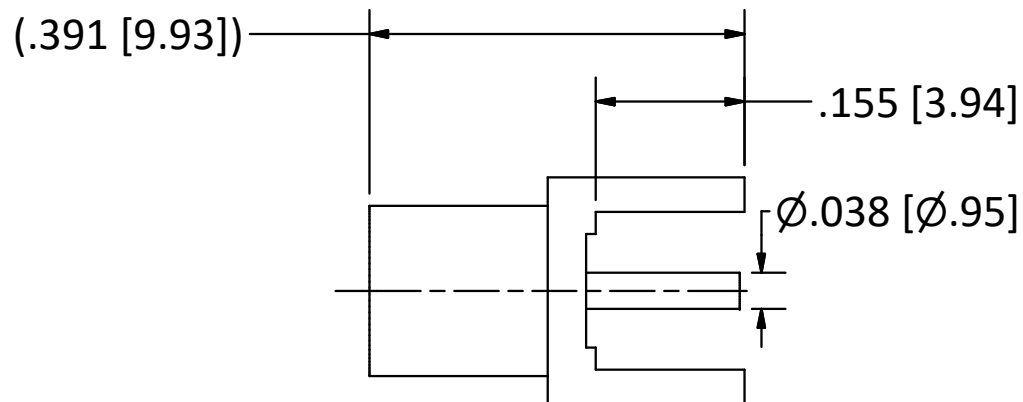
1

B

B



RECOMMENDED MOUNTING HOLES

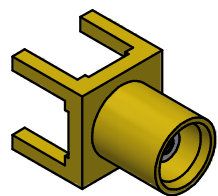


NOTES:

- 1. SPECIFICATIONS PER IDS-13J.
- 2. MAGNETISM <1.00000 mu.

A

A



SCALE 2.5 : 1

REV.	DESCRIPTION	DATE	BY
H	PER ECN 13702	2/25/20	JEM
G	PER ECN 10842	1/27/11	JEM
F	PER ECN 10396	6/1/10	JEM
E	PER ECN 6839	12/30/02	HN

This drawing embodies a proprietary design of The Phoenix Company of Chicago, Inc., Naugatuck, CT 06770. All design, manufacturing, reproduction, use, sale, and other rights regarding the same are expressly reserved. The information in this drawing may be covered completely or in part by patents and/or patents pending.

WARNING - THIS DOCUMENT CONTAINS TECHNICAL DATA WHOSE EXPORT IS RESTRICTED BY THE ARMS EXPORT CONTROL ACT (TITLE 22, U.S.C., SEC 2751, ET. SEQ.) OR THE EXPORT ADMINISTRATION ACT OF 1979, AS AMENDED, TITLE 50, U.S.C., APP 2401 ET SEQ. VIOLATIONS OF THESE EXPORT LAWS ARE SUBJECT TO SEVERE CRIMINAL PENALTIES. DISSEMINATE IN ACCORDANCE WITH PROVISIONS OF DOD DIRECTIVE 5230.25.

Filename: ver2\Autodesk Inventor Data Base\Assemblies\13 Series\13-1450-00J-CU.idw

UNLESS OTHERWISE SPECIFIED, PHOENIX WORKMANSHIP STANDARDS APPLY DIMENSIONS IN INCHES OR (METRIC)

DO NOT SCALE PRINTS
TOLERANCES ARE:
FRACTIONS: ± 1/64
DECIMALS: .XX ± .01
.XXX ± .003
ANGLES: ± 1/2°



APPROVALS	DATE
DRAWN RVR	12/30/2002
CHECKED HN	12/30/2002
QA	
MFG	
ENGINEER RVR	12/30/2002
APPROVED HN	12/30/2002

The **PHOENIX** Company of Chicago, Inc.

22 GREAT HILL RD., NAUGATUCK, CT 06770
WWW.PHOENIXOFCHICAGO.COM
PHONE: (800) 323-9562 FAX:(630) 206-1801

TITLE
MCX STRAIGHT JACK, PRINTED CIRCUIT MOUNT

SIZE	FSCM	DWG NO	REV	PLATING OPT.
B	58167	13-1450-00J	H	
SCALE	5 : 1	F.S.R. #	SHEET 1	OF 1

4

3

2

1