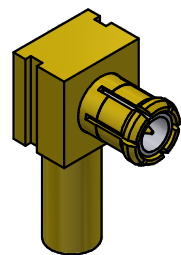


NOTES:

1. SPECIFICATIONS PER IDS-13J.
2. CAP AND FERRULE SHIPPED LOOSE.
3. ACCOMMODATES RG-178 OR RG-196 CABLE.
4. CRIMP USING .105 HEX DIE (M22520/5-03).
5. MAGNETISM: <1.00000 mu.



SCALE 2.5: 1

REV.	DESCRIPTION	DATE	BY
S	PER ECN 13633	1/14/20	JEM
R	PER ECN 11813	11/27/13	JEM
P	PER ECN 10840	1/26/11	JEM
N	PER ECN 10762	12/1/10	JEM
M	PER ECN 6896	1/13/03	HN

This drawing embodies a proprietary design of The Phoenix Company of Chicago, Inc., Naugatuck, CT 06770. All design, manufacturing, reproduction, use, sale, and other rights regarding the same are expressly reserved. The information in this drawing may be covered completely or in part by patents and/or patents pending.

WARNING - THIS DOCUMENT CONTAINS TECHNICAL DATA WHOSE EXPORT IS RESTRICTED BY THE ARMS EXPORT CONTROL ACT (TITLE 22, U.S.C., SEC 2751, ET. SEQ.) OR THE EXPORT ADMINISTRATION ACT OF 1979, AS AMENDED, TITLE 50, U.S.C., APP 2401 ET SEQ. VIOLATIONS OF THESE EXPORT LAWS ARE SUBJECT TO SEVERE CRIMINAL PENALTIES. DISSEMINATE IN ACCORDANCE WITH PROVISIONS OF DOD DIRECTIVE 5230.25.

Filename: ver2\Autodesk Inventor Data Base\Assemblies\13 Series\13-2800-0400J-CU.idw

UNLESS OTHERWISE SPECIFIED, PHOENIX WORKMANSHIP STANDARDS APPLY DIMENSIONS IN INCHES OR (METRIC)

DO NOT SCALE PRINTS
TOLERANCES ARE:
FRACTIONS: ± 1/64
DECIMALS: .XX ± .01
.XXX ± .003
ANGLES: ± 1/2°



APPROVALS	DATE
DRAWN RVR	8/17/1992
CHECKED HN	8/17/1992
QA	
MFG	
ENGINEER LB	8/17/1992
APPROVED HN	8/17/1992

The **PHOENIX** Company of Chicago, Inc.

22 GREAT HILL RD., NAUGATUCK, CT 06770
WWW.PHOENIXOFCHICAGO.COM
PHONE: (800) 323-9562 FAX:(630) 206-1801

TITLE					
MCX RIGHT ANGLE PLUG, CRIMP TERMINATION					
SIZE B	FSCM 58167	DWG NO 13-2800-0400J	REV S	PLATING OPT.	
SCALE	5: 1	F.S.R. #	SHEET	1	OF 1