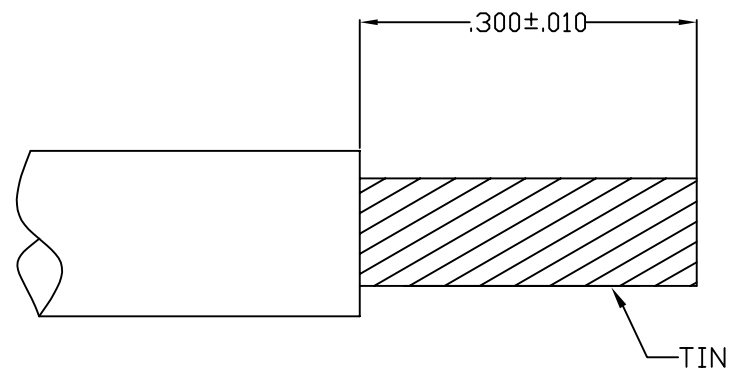


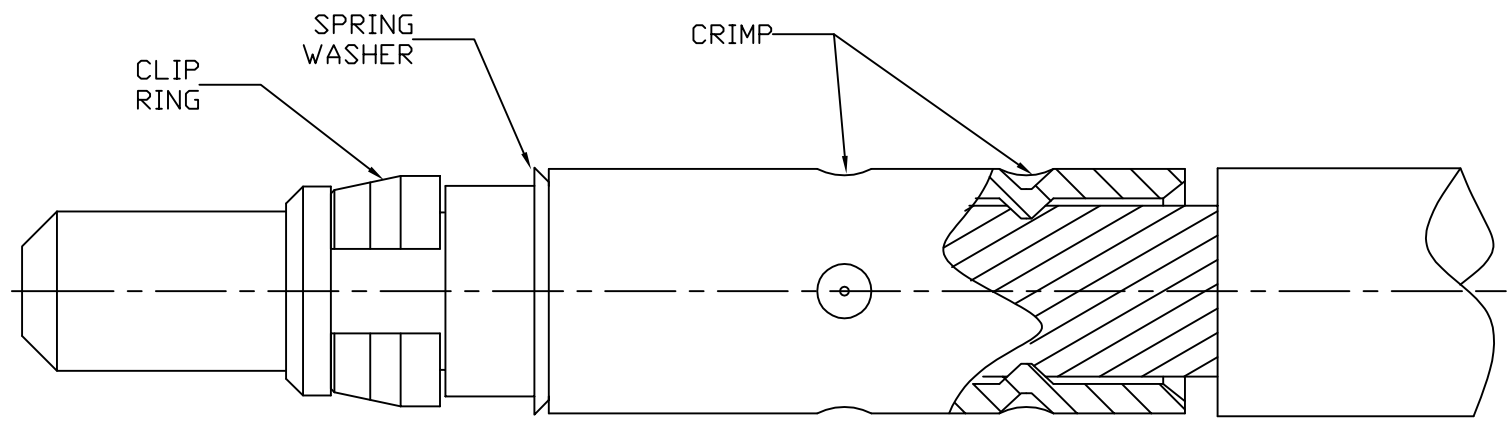
CABLE ASSEMBLY PROCEDURE	
P/N	15-0080-0001
PAGE 1 OF 1	DATE: 08/30/10
DRAWN: MS	APPROVED: JEM
FOR USE #8/10 AWG WIRE	

The **PHOENIX** Company of Chicago™
 22 GREAT HILL RD., NAUGATUCK, CT 06770
 WWW.PHOENIXOFCHICAGO.COM
 PHONE: (203) 729-9090 FAX: (203) 723-1794

REV	DESCRIPTION	DATE	APPR
E	PER ECN 10572	08/30/10	JEM
F	PER ECN 13565	11/6/19	JEM



STEP 1
 TRIM WIRE TO DIMENSIONS SHOWN.
 TIN CENTER CONDUCTOR.



STEP 2
 CRIMP WITH DANIELS CRIMP TOOLM3 00BT
 PALCO'S POSITIONER T0623 USING SETTING 5 FOR #8 AWG WIRE
 AND SETTING 4 FOR # 10 AWG WIRE.