
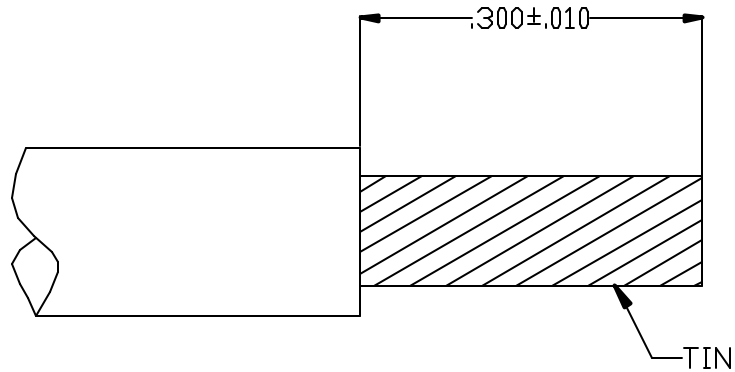
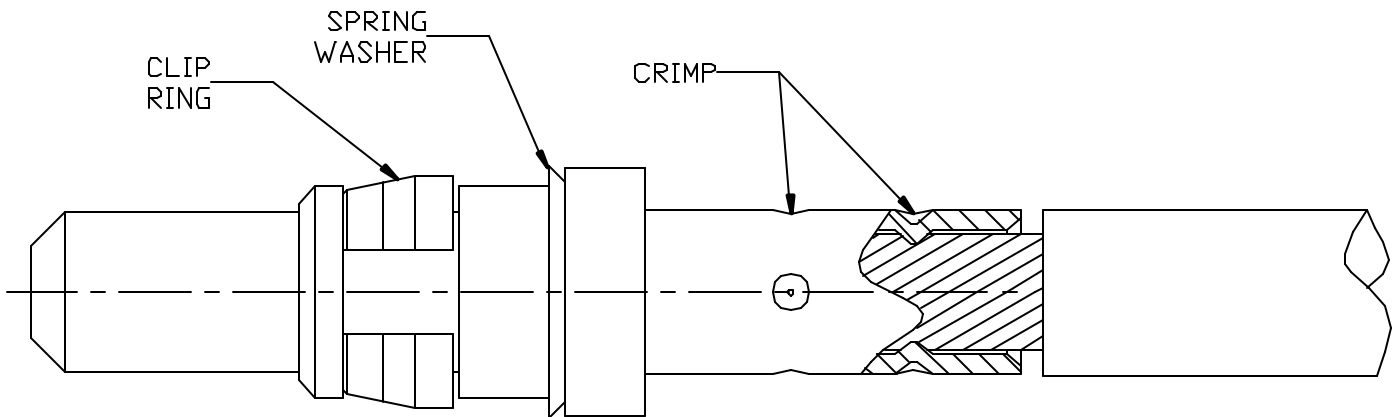


CABLE ASSEMBLY PROCEDURE		 22 GREAT HILL ROAD, NAUGATUCK, CT. 06770 PHONE: (203) 729-9090 FAX: (203) 723-1794	REV	DESCRIPTION	DATE	APPR
P/N	15-0080-0002		D	PER ECN 6141	05/31/01	HN
PAGE 1 OF 1	DATE: 05/31/01		E	PER ECN 10514	08/13/10	JEM
DRAWN: EK	APPROVED: HN					
FOR USE #12/14 AWG WIRE						



**STEP 1**

TRIM WIRE TO DIMENSIONS SHOWN.  
TIN CENTER CONDUCTOR.



**STEP 2**

CRIMP WITH DANIELS CRIMP TOOL FT8,  
PALCO'S POSITIONER T0624 USING SETTING 6 FOR #12 AWG WIRE  
AND SETTING 5 FOR # 14 AWG WIRE.