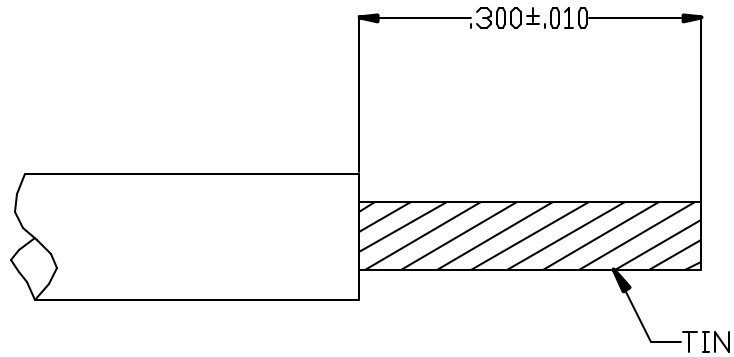
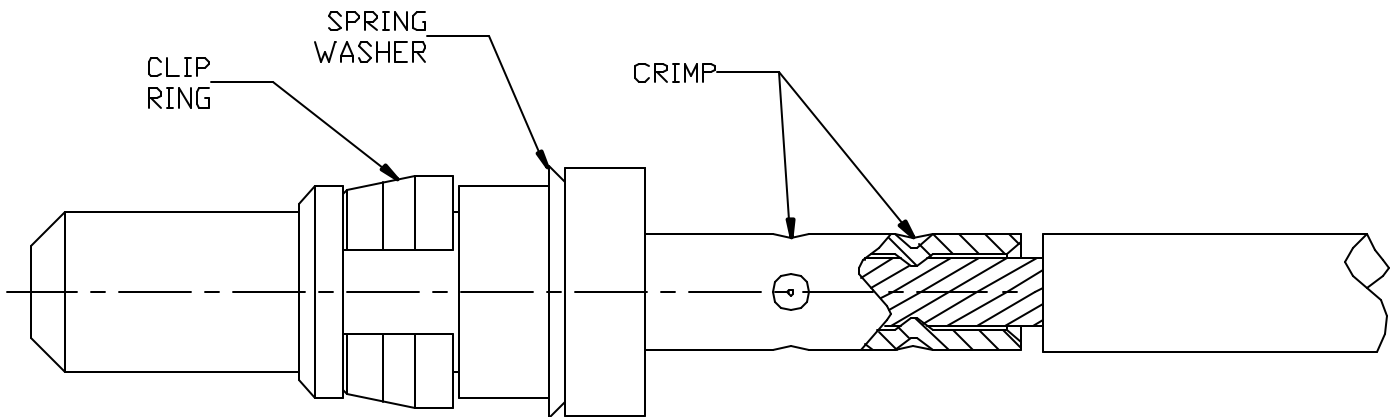


CABLE ASSEMBLY PROCEDURE		PALCO CONNECTOR 22 GREAT HILL ROAD, NAUGATUCK, CT. 06770 PHONE: (203) 729-9090 FAX: (203) 723-1794	REV	DESCRIPTION	DATE	APPR
P/N	15-0080-0003		C	PER ECN 7498	06/24/04	JEM
PAGE 1 OF 1	DATE: 06/24/04		D	PER ECN 10571	08/30/10	JEM
DRAWN: EK	APPROVED: JEM					
FOR USE #16/18 AWG WIRE						



STEP 1

TRIM WIRE TO DIMENSIONS SHOWN.
 TIN CENTER CONDUCTOR.



STEP 2

CRIMP WITH DANIELS CRIMP TOOL FT8,
 PALCO'S POSITIONER T0624 USING SETTING 8 FOR #16 AWG WIRE
 AND SETTING 6 FOR # 18 AWG WIRE.