

CABLE ASSEMBLY PROCEDURE

P/N 15-0580-1201

PAGE 1 OF 1 DATE: 07/21/99

DRAWN: KJT APPROVED: HN

FOR USE WITH RG-58 OR EQUIV. CABLE

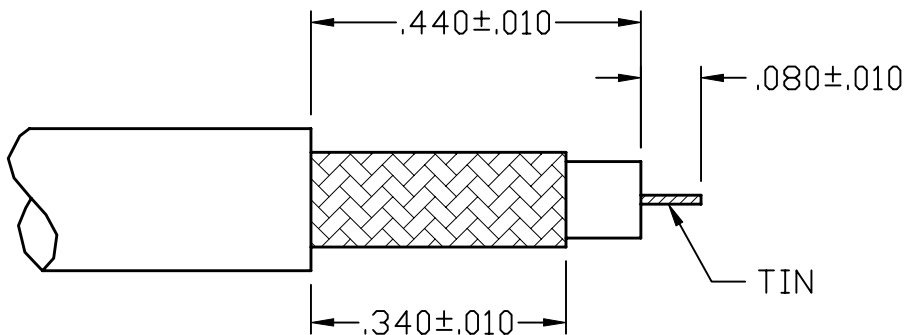
PALEO
CONNECTOR

22 GREAT HILL ROAD, NAUGATUCK, CT. 06770
PHONE: (203) 729-9090 FAX: (203) 723-1794

REV	DESCRIPTION	DATE	APPR
B	REL. ECN 5155	07/21/99	HN
C	REL. ECN 6585	04/17/02	HN

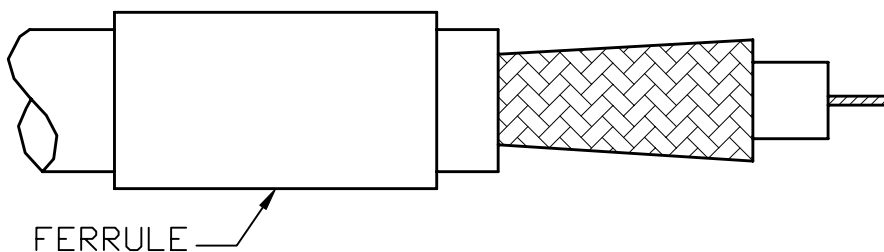
STEP 1

TRIM CABLE TO DIMENSIONS SHOWN. TIN CENTER CONDUCTOR.



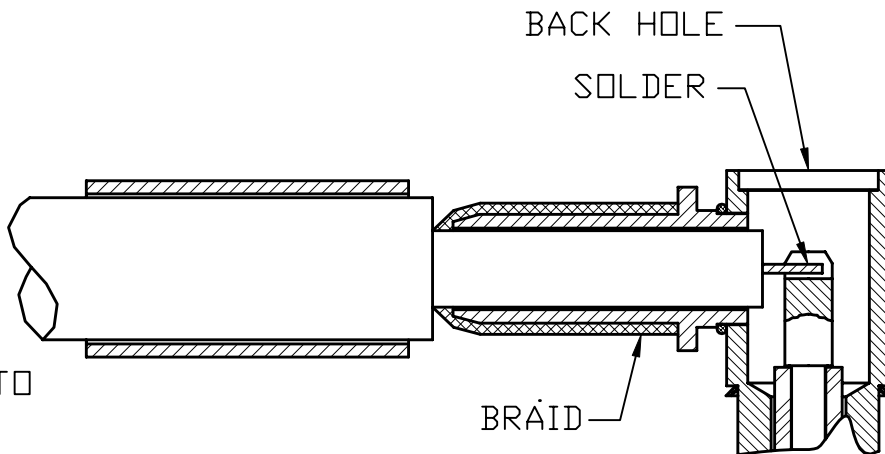
STEP 2

SLIDE FERRULE OVER JACKET. FLAIR BRAID BY ROTATING DIELECTRIC.



STEP 3

INSERT CABLE INTO WEDGE AND CENTER CONDUCTOR INTO THE SLOT OF THE CONTACT. SOLDER CENTER CONDUCTOR INTO CONTACT SLOT THROUGH BACK HOLE. CLEAN.



STEP 4

BUTT FERRULE AGAINST SHOULDER AND CRIMP FERRULE TO THE BODY USING .213 HEX. CRIMP. SOLDER CAP INTO BODY. CLEAN.

