

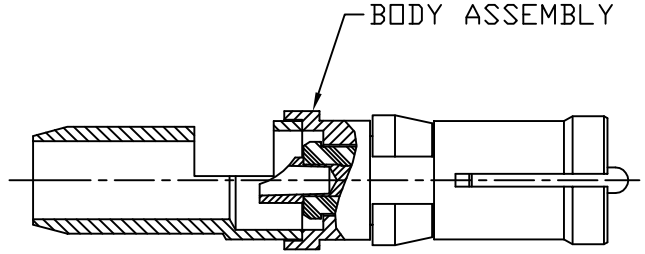
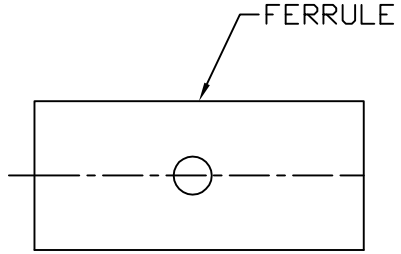
CABLE ASSEMBLY PROCEDURE	
P/N	15-1020-1201
PAGE 1 OF 1	DATE: 11/21/96
DRAWN: MY	APPROVED: HN
FOR USE WITH RG58, 141 & 303 CABLES	

The **PHOENIX** Company of Chicago™  
 22 GREAT HILL RD., NAUGATUCK, CT 06770  
 WWW.PHOENIXOFCHICAGO.COM

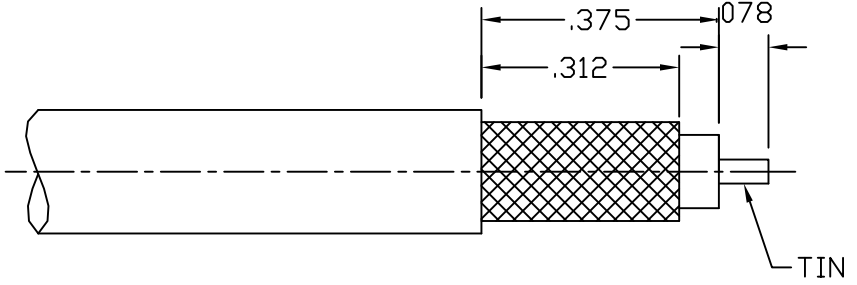
REV	DESCRIPTION	DATE	APPR
B	REL. PER 5144	07/12/99	HN
C	REL. PER 6819	12/03/02	HN
D	PER ECN 10577	09/01/10	JEM
E	PER ECN 13342	06/18/19	JEM

**\*NOTES:**

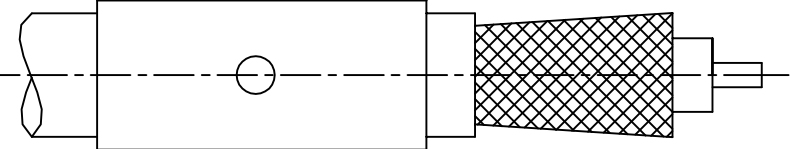
1) DIMENSIONS ARE IN INCHES UNLESS OTHERWISE SPECIFIED [METRIC].



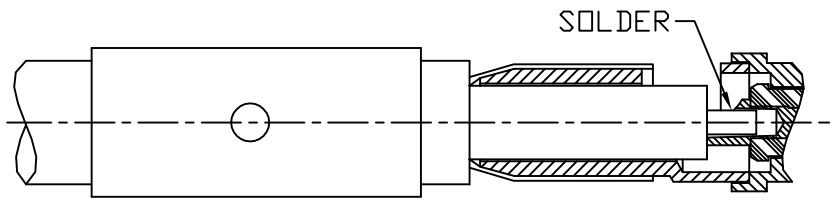
**STEP 1**  
 TRIM CABLE TO DIMENSIONS SHOWN. TIN CENTER CONDUCTOR.



**STEP 2**  
 SLIDE FERRULE OVER CABLE AND FLAIR BRAID BY ROTATING DIELECTRIC.



**STEP 3**  
 INSERT CABLE DIELECTRIC AND CENTER CONDUCTOR INTO BARREL OF CONNECTOR. SOLDER CENTER CONDUCTOR TO CENTER CONTACT AND CLEAN SOLDER JOINT.



**STEP 4**  
 SLIDE FERRULE OVER CABLE UP TO SHOULDER OF BODY. SOLDER BRAID TO CONNECTOR BARREL THROUGH HOLE IN FERRULE AND CLEAN SOLDER JOINT.

