

**CABLE ASSEMBLY PROCEDURE**

P/N 15-1080-0400

PAGE 1 OF 1 DATE: 11/29/01

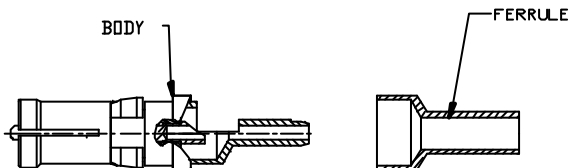
DRAWN: EK APPROVED: HN

FOR USE RG178 & RG196 CABLES

**PALEO  
CONNECTOR**

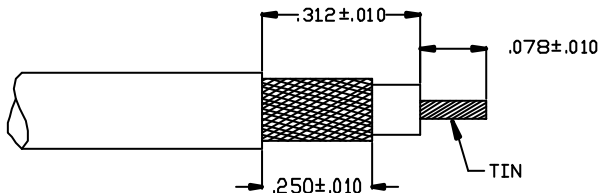
22 GREAT HILL ROAD, NAUGATUCK, CT. 06770  
PHONE: (203) 729-9090 FAX: (203) 723-1794

REV	DESCRIPTION	DATE	APPR
II	PER ECN 6358	11/29/01	HN



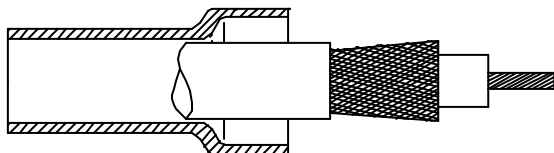
**STEP 1**

TRIM CABLE TO DIMENSIONS SHOWN.  
TIN CENTER CONDUCTOR.



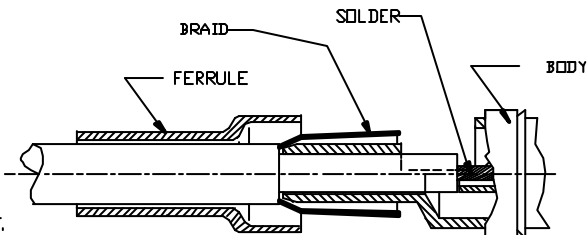
**STEP 2**

SLIDE FERRULE UP OVER CABLE,  
ROTATE DIELECTRIC TO FLAIR BRAID.



**STEP 3**

INSERT CONNECTOR WEDGE BETWEEN CABLE BRAID  
AND DIELECTRIC UNTIL CABLE DIELECTRIC BUTTS  
AGAINST CONNECTOR CENTER CONTACT. SOLDER  
CENTER CONDUCTOR OF CABLE TO CENTER CONTACT.  
CLEAN.



**STEP 4**

BUTT FERRULE AGAINST SHOULDER OF CONNECTOR  
AND CRIMP USING .105 HEX DIE SET Y-196 (M22520/5-03).

