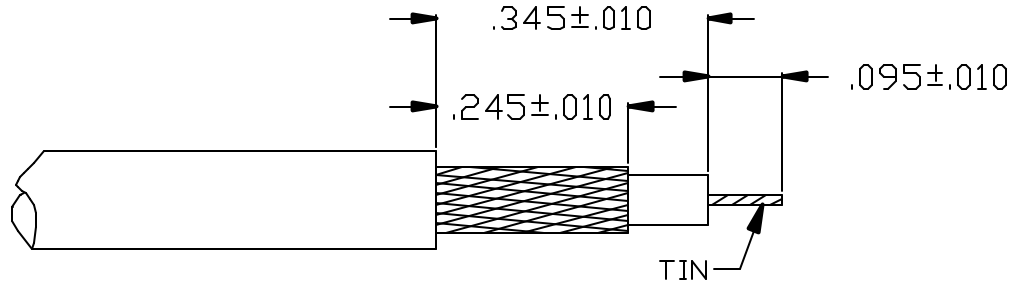
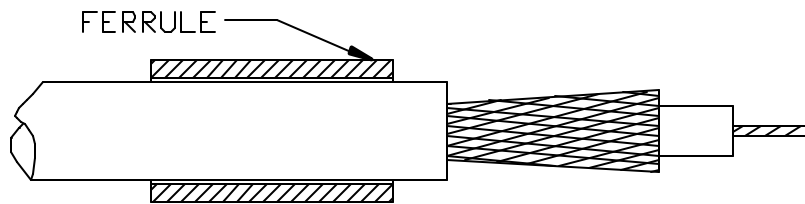


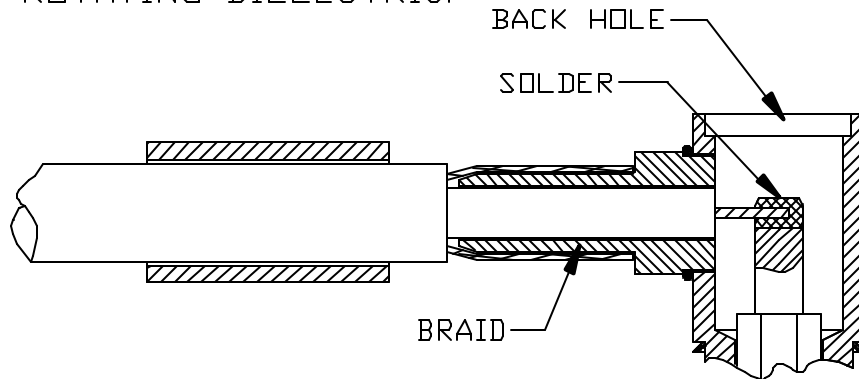
CABLE ASSEMBLY PROCEDURE		PALEO CONNECTOR 22 GREAT HILL ROAD, NAUGATUCK, CT. 06770 PHONE: (203) 729-9090 FAX: (203) 723-1794	REV	DESCRIPTION	DATE	APPR
P/N	15-1580-0400		D	PER ECN 10579	08/31/10	JEM
PAGE 1 OF 1	DATE: 08/31/10					
DRAWN: MS	APPROVED: JEM					
FOR RG 178 & 196 CABLES						



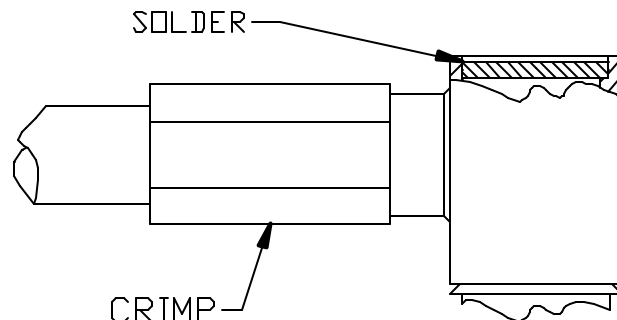
STEP 1
 TRIM CABLE TO DIM SHOWN.
 TIN CENTER CONDUCTOR.



STEP 2
 SLIDE FERRULE OVER JACKET.
 FLAIR BRAID BY ROTATING DIELECTRIC.



STEP 3
 INSERT CABLE DIELECTRIC INTO WEDGE
 AND CENTER CONDUCTOR TO THE SLOT
 OF CONTACT. SOLDER CENTER CONDUCTOR
 CONTACT INTO SLOT THROUGH
 BACK HOLE. CLEAN.



STEP 4
 BUTT FERRULE AGAINST SHOULDER
 AND CRIMP USING .105 HEX (M22520/5-03)
 SOLDER CAP INTO BODY. CLEAN.