

4

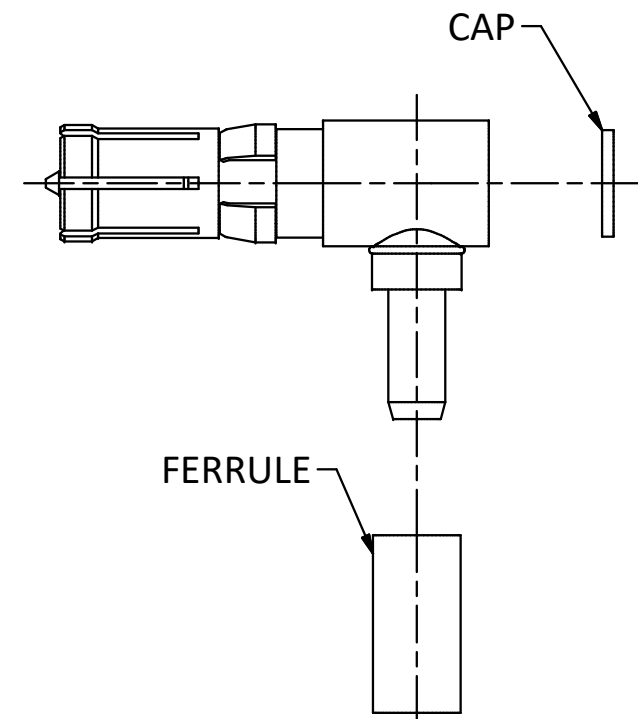
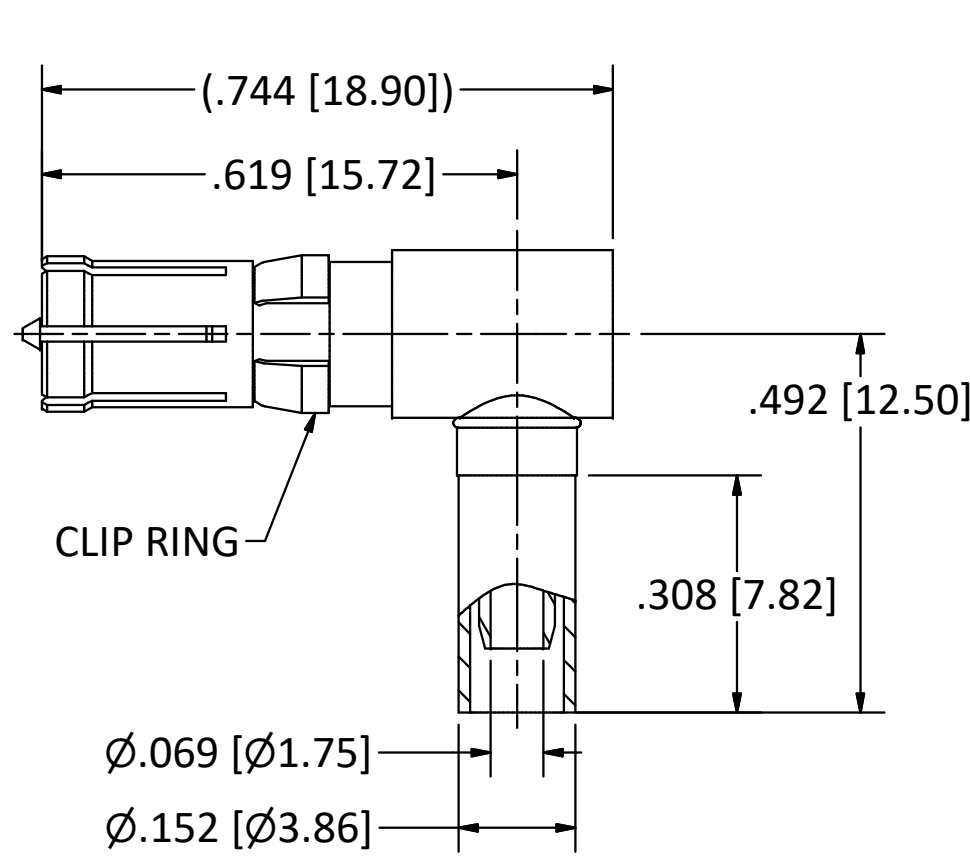
3

2

1

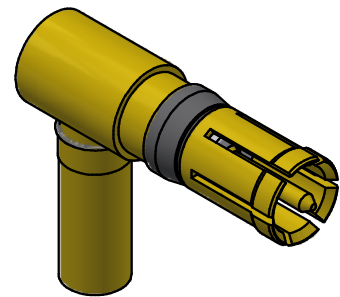
B

B



NOTES:

- 1. SPECIFICATIONS PER IDS-15J.
 - 2. FERRULE AND CAP SHIPPED LOOSE.
 - 3. ACCOMMODATES RG-174, RG-179, RG-187, RG-188, OR RG-316 CABLE.
 - 4. MAGNETISM: <1.00000 mu.
 - 5. CRIMP WITH .128 HEX (M22520/5-03).
- HOUSING:** D-SUBMINIATURE, SIZE 8 CAVITY.



SCALE 2.5 : 1

4

3

2

1

A

A

F	PER ECN 11301	3/15/12	JEM
E	PER ECN 10580	8/31/10	JEM
D	PER ECN 9169	11/30/07	JM
A	PER ECN 6838	12/30/02	HN
REV.	DESCRIPTION	DATE	BY

This drawing embodies a proprietary design of The Phoenix Company of Chicago, Inc., Naugatuck, CT 06770. All design, manufacturing, reproduction, use, sale, and other rights regarding the same are expressly reserved. The information in this drawing may be covered completely or in part by patents and/or patents pending.

WARNING - THIS DOCUMENT CONTAINS TECHNICAL DATA WHOSE EXPORT IS RESTRICTED BY THE ARMS EXPORT CONTROL ACT (TITLE 22, U.S.C., SEC 2751, ET. SEQ.) OR THE EXPORT ADMINISTRATION ACT OF 1979, AS AMENDED, TITLE 50, U.S.C., APP 2401 ET SEQ. VIOLATIONS OF THESE EXPORT LAWS ARE SUBJECT TO SEVERE CRIMINAL PENALTIES. DISSEMINATE IN ACCORDANCE WITH PROVISIONS OF DOD DIRECTIVE 5230.25.

Filename: ver2\Autodesk Inventor Data Base\Assemblies\15 Series\15-1580-0670J-CU.idw

UNLESS OTHERWISE SPECIFIED, PHOENIX WORKMANSHIP STANDARDS APPLY DIMENSIONS IN INCHES OR (METRIC)

DO NOT SCALE PRINTS
TOLERANCES ARE:
FRACTIONS: $\pm 1/64$
DECIMALS: $.XX \pm .01$
 $.XXX \pm .003$
ANGLES: $\pm 1/2^\circ$

$\sqrt{32}$

	APPROVALS	DATE
DRAWN	RVR	12/30/2002
CHECKED	HN	12/30/2002
QA		
MFG		
ENGINEER	JEM	12/30/2002
APPROVED	HN	12/30/2002

The **PHOENIX** Company of Chicago, Inc.

22 GREAT HILL RD., NAUGATUCK, CT 06770
WWW.PHOENIXOFCHICAGO.COM
PHONE: (800) 323-9562 FAX:(630) 206-1801

TITLE PDM RIGHT ANGLE JACK, CRIMP TERMINATION					
SIZE B	FSCM 58167	DWG NO 15-1580-0670J	REV F	PLATING OPT.	
SCALE 4 : 1	F.S.R. #	SHEET 1 OF 1			