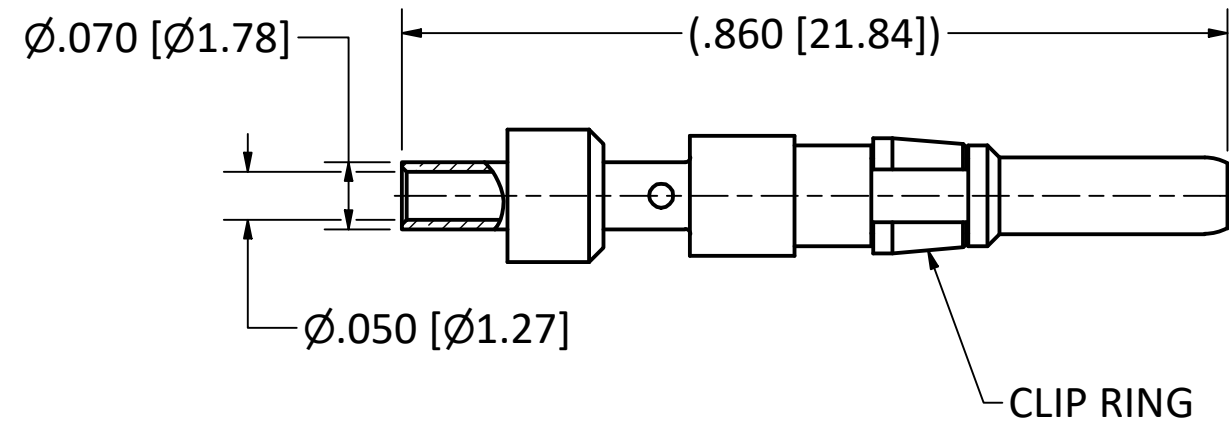
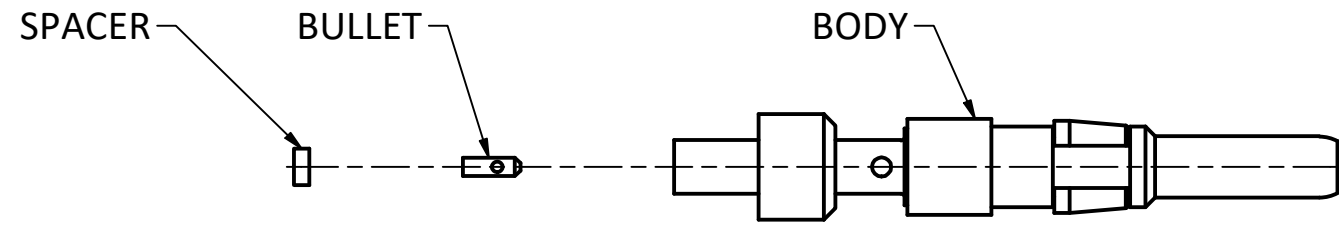


4

3

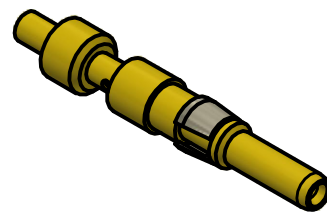
2

1



NOTES:

- 1. SPECIFICATIONS PER IDS-156.
- 2. BULLET AND SPACER SHIPPED LOOSE.
- 3. ACCOMMODATES 1.37mm OR EQUIVALENT CABLES.
- 4. ELECTRICAL RESULTS WHEN MATED WITH 156 SERIES PKZ RECECPTACLE:
 - a) FREQUENCY: DC TO 6 GHz.
 - b) VSWR: 1.25:1 MAX.
- 5. HOUSING: PRX, PX, AND CUSTOM HOUSINGS, SIZE 16 CAVITY.
- 6. DOES NOT MATE WITH OTHER INDUSTRY-STANDARD SIZE 16 CONTACTS.



SCALE 2.5 : 1

C	PER ECN 14446	JEM	9/30/2024	DW	11/26/2024
B	PER ECN 13166	BGW	10/25/2018	JEM	10/25/2018
A	REL. PER ECN 12493	JEM	04/04/2017	RMB	04/04/2017
REV.	DESCRIPTION	BY	DATE	APPR.	DATE

This drawing embodies a proprietary design of The Phoenix Company of Chicago, Inc., Naugatuck, CT 06770. All design, manufacturing, reproduction, use, sale, and other rights regarding the same are expressly reserved. The information in this drawing may be covered completely or in part by patents and/or patents pending.

WARNING - THIS DOCUMENT CONTAINS TECHNICAL DATA WHOSE EXPORT IS RESTRICTED BY THE ARMS EXPORT CONTROL ACT (TITLE 22, U.S.C., SEC 2751, ET. SEQ.) OR THE EXPORT ADMINISTRATION ACT OF 1979, AS AMENDED, TITLE 50, U.S.C., APP 2401 ET SEQ. VIOLATIONS OF THESE EXPORT LAWS ARE SUBJECT TO SEVERE CRIMINAL PENALTIES. DISSEMINATE IN ACCORDANCE WITH PROVISIONS OF DOD DIRECTIVE 5230.25.

UNLESS OTHERWISE SPECIFIED, PHOENIX WORKMANSHIP STANDARDS APPLY DIMENSIONS IN INCHES OR [METRIC] DO NOT SCALE PRINTS TOLERANCES ARE: FRACTIONS: ± 1/64 DECIMALS: .XX ± .01 .XXX ± .003 ANGLES: ± 1/2°	APPROVALS	DATE
	DRAWN JEM	9/22/2020
	CHECKED RMB	4/4/2017
	QA	
	MFG RMB	4/4/2017
	ENGINEER JEM	4/4/2017
APPROVED RMB	4/4/2017	

The PHOENIX Company of Chicago, Inc.
 22 GREAT HILL RD., NAUGATUCK, CT 06770
 WWW.PHOENIXOFCHICAGO.COM
 PHONE: (800) 323-9562 FAX:(630) 206-1801

TITLE
SIZE 16 PkZ® PLUG, DIRECT SOLDER TERMINATION

SIZE B	FSCM 58167	DWG NO 156-0202-0401	REV C	PLATING OPT. A, C
SCALE 5 : 1		F.S.R. #	SHEET 1 OF 1	

4

3

2

1