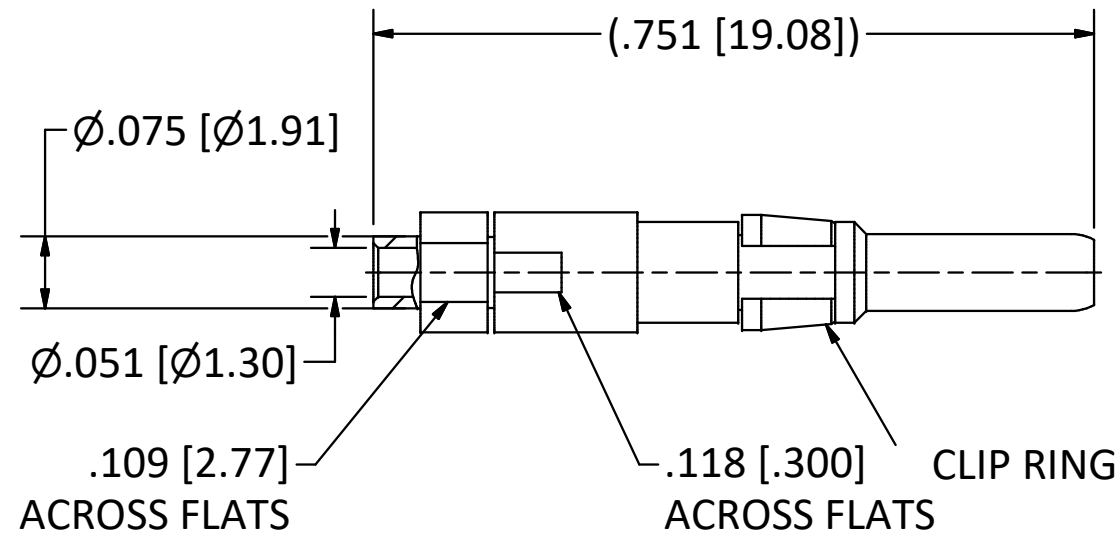
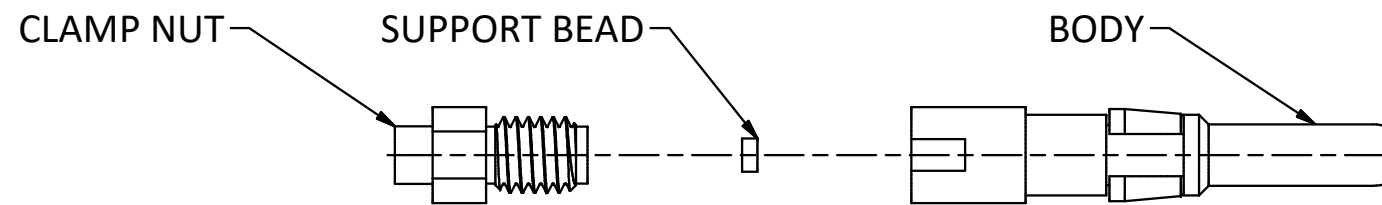


4

3

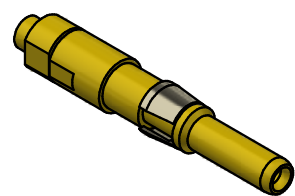
2

1



NOTES:

- 1. SPECIFICATIONS PER IDS-156.
  - 2. CLAMP NUT AND SUPPORT BEAD SHIPPED LOOSE.
  - 3. ACCOMMODATES M17/151 (.047 SEMI-RIGID) OR EQUIVALENT FLEXIBLE CABLE.
- HOUSING:** PRC AND CUSTOM, SIZE 16 CAVITY.



SCALE 2.5 : 1

REV	DESCRIPTION	DATE	BY
F	PER ECN 13921	13/3/20	JEM
E	PER ECN 13857	9/24/20	JEM
D	PER ECN 13046	5/7/19	JEM
C	PER ECN 12304	5/2/16	RMB
B	PER ECN 12150	4/17/15	RMB
A	REL. PER ECN 11794	11/11/13	JEM
01	PRELIMINARY	11/5/13	JEM

This drawing embodies a proprietary design of The Phoenix Company of Chicago, Inc., Naugatuck, CT 06770. All design, manufacturing, reproduction, use, sale, and other rights regarding the same are expressly reserved. The information in this drawing may be covered completely or in part by patents and/or patents pending.

WARNING - THIS DOCUMENT CONTAINS TECHNICAL DATA WHOSE EXPORT IS RESTRICTED BY THE ARMS EXPORT CONTROL ACT (TITLE 22, U.S.C., SEC 2751, ET. SEQ.) OR THE EXPORT ADMINISTRATION ACT OF 1979, AS AMENDED, TITLE 50, U.S.C., APP 2401 ET SEQ. VIOLATIONS OF THESE EXPORT LAWS ARE SUBJECT TO SEVERE CRIMINAL PENALTIES. DISSEMINATE IN ACCORDANCE WITH PROVISIONS OF DOD DIRECTIVE 5230.25.

Filename: ver2\Autodesk Inventor Data Base\Assemblies\156 Series\156-0302-0470-CU.idw

UNLESS OTHERWISE SPECIFIED, PHOENIX WORKMANSHIP STANDARDS APPLY DIMENSIONS IN INCHES OR (METRIC)

DO NOT SCALE PRINTS  
TOLERANCES ARE:  
FRACTIONS: ± 1/64  
DECIMALS: .XX ± .01  
.XXX ± .003  
ANGLES: ± 1/2°



APPROVALS	DATE
DRAWN JEM	11/5/2013
CHECKED RMB	11/5/2013
QA	
MFG	
ENGINEER JEM	11/5/2013
APPROVED RMB	11/5/2013

The **PHOENIX** Company of Chicago, Inc.

22 GREAT HILL RD., NAUGATUCK, CT 06770  
WWW.PHOENIXOFCHICAGO.COM  
PHONE: (800) 323-9562 FAX:(630) 206-1801

TITLE  
**PKZ® PLUG, SOLDER/CLAMP TERMINATION**

SIZE	FSCM	DWG NO	REV	PLATING OPT.
B	58167	<b>156-0302-0470</b>	F	A, B
SCALE	5 : 1	F.S.R. #	SHEET 1	OF 1

4

3

2

1