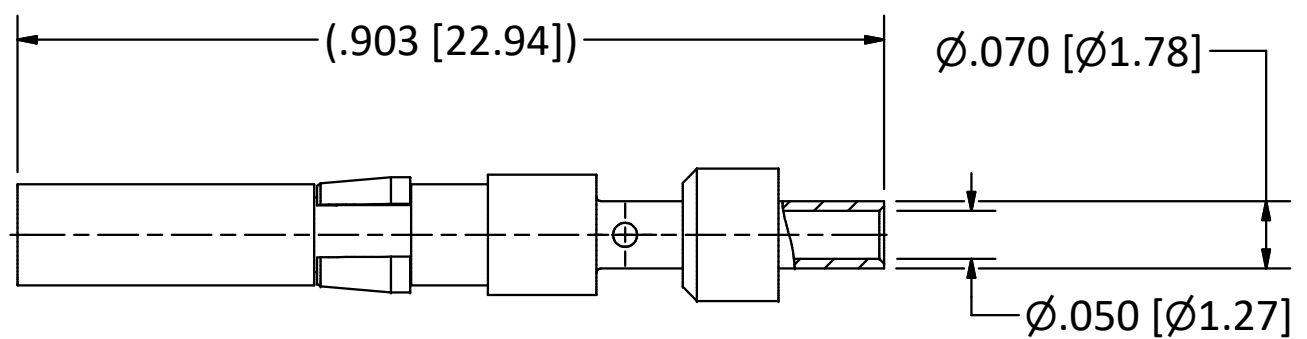
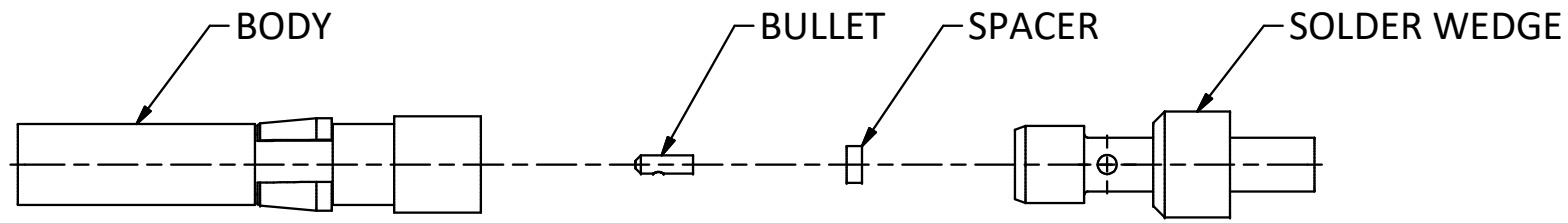


4

3

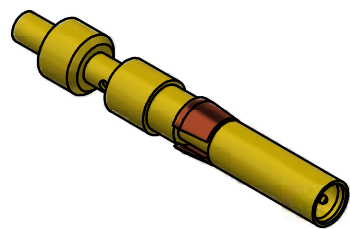
2

1



NOTES:

- 1. SPECIFICATIONS PER IDS-156.
 - 2. BULLET, SOLDER WEDGE, AND SPACER SHIPPED LOOSE.
 - 3. ACCOMMODATES RG-178, RG-196, OR 1.37mm CABLE.
- HOUSING:** PRC AND CUSTOM, SIZE 16 CAVITY.



SCALE 2.5 : 1

C	PER ECN 14069	10/22/21	RMB
B	PER ECN 12470	3/8/17	RMB
A	REL. PER ECN 12370	10/4/16	RMB
REV	DESCRIPTION	DATE	BY

This drawing embodies a proprietary design of The Phoenix Company of Chicago, Inc., Naugatuck, CT 06770. All design, manufacturing, reproduction, use, sale, and other rights regarding the same are expressly reserved. The information in this drawing may be covered completely or in part by patents and/or patents pending.

WARNING - THIS DOCUMENT CONTAINS TECHNICAL DATA WHOSE EXPORT IS RESTRICTED BY THE ARMS EXPORT CONTROL ACT (TITLE 22, U.S.C., SEC 2751, ET. SEQ.) OR THE EXPORT ADMINISTRATION ACT OF 1979, AS AMENDED, TITLE 50, U.S.C., APP 2401 ET SEQ. VIOLATIONS OF THESE EXPORT LAWS ARE SUBJECT TO SEVERE CRIMINAL PENALTIES. DISSEMINATE IN ACCORDANCE WITH PROVISIONS OF DOD DIRECTIVE 5230.25.

Filename: \\Autodesk Inventor Data Base\Assemblies\78 Series\78-1080-0670-CU-Layout for C Sized Drawing.idw

UNLESS OTHERWISE SPECIFIED, PHOENIX WORKMANSHIP STANDARDS APPLY DIMENSIONS IN INCHES OR (METRIC)

DO NOT SCALE PRINTS
TOLERANCES ARE:
FRACTIONS: ± 1/64
DECIMALS: .XX ± .01
.XXX ± .003
ANGLES: ± 1/2°



	APPROVALS	DATE
DRAWN	RMB	10/4/2016
CHECKED	JEM	10/4/2016
QA		
MFG		
ENGINEER	RMB	10/4/2016
APPROVED	JEM	10/4/2016

The PHOENIX Company of Chicago, Inc.

22 GREAT HILL RD., NAUGATUCK, CT 06770
WWW.PHOENIXOFCHICAGO.COM
PHONE: (800) 323-9562 FAX:(630) 206-1801

TITLE
PkZ® RECEPTACLE, DIRECT SOLDER TERMINATION

SIZE B	FSCM 58167	DWG NO 156-1202-0401	REV C	PLATING OPT. A, C
SCALE 5 : 1	F.S.R. #	SHEET 1 OF 1		

4

3

2

1