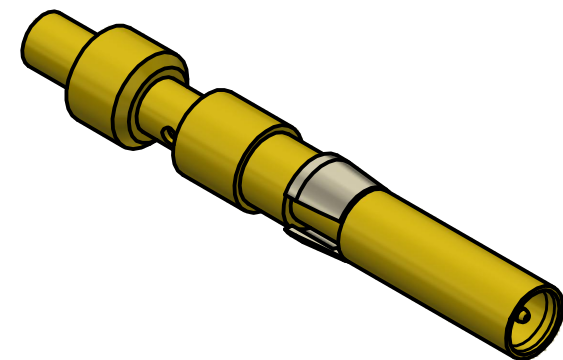


- NOTES:
- 1. SPECIFICATIONS PER IDS-156.
 - 2. BULLET AND SPACER SHIPPED LOOSE.
 - 3. ACCOMMODATES RG-178, RG-196, OR EQUIVALENT CABLES.
 - 4. ELECTRICAL RESULTS WHEN MATED WITH 156 SERIES PkZ® PLUG:
 - a) FREQUENCY: DC TO 3 GHz.
 - b) VSWR: 1.25:1 MAX.
 - 5. HOUSING: PX, PRX AND CUSTOM HOUSINGS, SIZE 16 CAVITY.
 - 6. DOES NOT MATE WITH OTHER INDUSTRY-STANDARD SIZE 16 CONTACTS.



SCALE 4 : 1

				<p>This drawing embodies a proprietary design of The Phoenix Company of Chicago, Inc., Naugatuck, CT 06770. All design, manufacturing, reproduction, use, sale, and other rights regarding the same are expressly reserved. The information in this drawing may be covered completely or in part by patents and/or patents pending.</p>	<p>WARNING - THIS DOCUMENT CONTAINS TECHNICAL DATA WHOSE EXPORT IS RESTRICTED BY THE ARMS EXPORT CONTROL ACT (TITLE 22, U.S.C., SEC 2751, ET. SEQ.) OR THE EXPORT ADMINISTRATION ACT OF 1979, AS AMENDED, TITLE 50, U.S.C., APP 2401 ET SEQ. VIOLATIONS OF THESE EXPORT LAWS ARE SUBJECT TO SEVERE CRIMINAL PENALTIES. DISSEMINATE IN ACCORDANCE WITH PROVISIONS OF DOD DIRECTIVE 5230.25.</p>				<p><i>The PHOENIX Company of Chicago, Inc.</i></p> <p>22 GREAT HILL RD., NAUGATUCK, CT 06770 WWW.PHOENIXOFCHICAGO.COM</p> <p>PHONE: (800) 323-9562 FAX:(630) 206-1801</p>							
<p>UNLESS OTHERWISE SPECIFIED, PHOENIX WORKMANSHIP STANDARDS APPLY DIMENSIONS IN INCHES OR [METRIC]</p> <p>DO NOT SCALE PRINTS</p> <p>TOLERANCES ARE: FRACTIONS: ± 1/64 DECIMALS: .XX ± .01 .XXX ± .003 ANGLES: ± 1/2°</p> <p>32√</p>			APPROVALS			DATE		<p>TITLE</p> <p>PkZ® RECEPTACLE, SIZE 16, DIRECT SOLDER</p>								
			DRAWN			5/14/2024										
			CHECKED			10/16/2024										
			QA													
			MFG													
			ENGINEER			2/6/2025		SIZE	FSCM	DWG NO		REV	PLATING OPT.			
			SJG			2/6/2025		B	58167	156-1202-0402		A	A, C			
			APPROVED			2/4/2025		SCALE		4 : 1		F.S.R. #		SHEET 1 OF 1		
			DW			2/4/2025										
A	ECN 14447		2/4/2025		DW											
REV	DESCRIPTION		DATE		APPR.											