

4

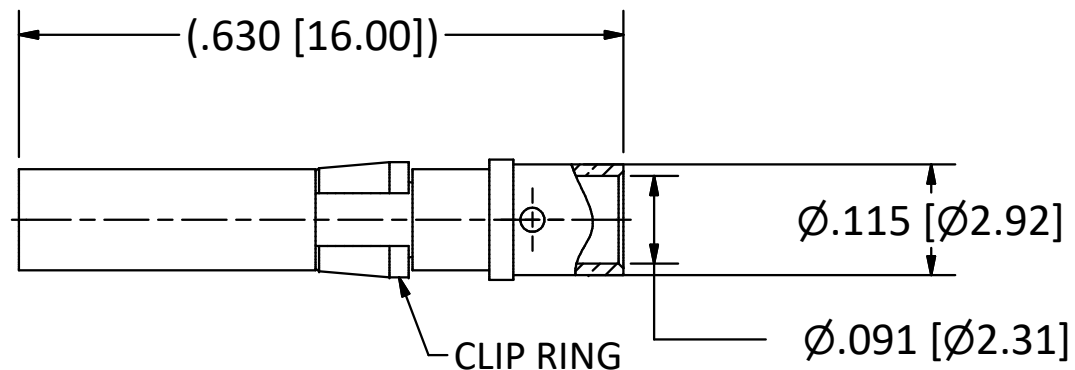
3

2

1

B

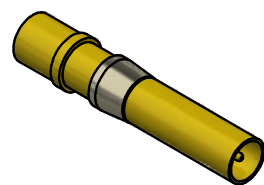
B



NOTES:

- 1. SPECIFICATIONS PER IDS-156.
- 2. ACCOMMODATES RG-405 (.086 SEMI-RIGID) OR EQUIVALENT FLEXIBLE CABLE.
- 3. ELECTRICAL RESULTS WHEN MATED TO 156 SERIES SIZE 16 PkZ® PLUG:
 - a) FREQUENCY: DC TO 50 GHz.
 - b) VSWR: 1.40:1 (MAX) UP TO 40 GHz.

HOUSING: PRC AND CUSTOM, SIZE 16 CAVITY.



SCALE 2.5 : 1

4

3

2

1

A

A

REV	DESCRIPTION	DATE	BY
G	PER ECN 13376	6/27/19	JEM
F	PER ECN 13274	3/26/19	JEM
E	PER ECN 13064	8/8/18	JEM
D	PER ECN 12601	9/12/17	RMB
C	PER ECN 12226	10/2/15	JEM
B	PER ECN 12172	6/4/15	JEM
A	REL. PER ECN 11878	3/28/14	JEM
01	PRELIMINARY	11/19/13	JEM

This drawing embodies a proprietary design of The Phoenix Company of Chicago, Inc., Naugatuck, CT 06770. All design, manufacturing, reproduction, use, sale, and other rights regarding the same are expressly reserved. The information in this drawing may be covered completely or in part by patents and/or patents pending.

WARNING - THIS DOCUMENT CONTAINS TECHNICAL DATA WHOSE EXPORT IS RESTRICTED BY THE ARMS EXPORT CONTROL ACT (TITLE 22, U.S.C., SEC 2751, ET. SEQ.) OR THE EXPORT ADMINISTRATION ACT OF 1979, AS AMENDED, TITLE 50, U.S.C., APP 2401 ET SEQ. VIOLATIONS OF THESE EXPORT LAWS ARE SUBJECT TO SEVERE CRIMINAL PENALTIES. DISSEMINATE IN ACCORDANCE WITH PROVISIONS OF DOD DIRECTIVE 5230.25.

Filename: ver2\Autodesk Inventor Data Base\Assemblies\156 Series\156-1202-0860-CU.idw

UNLESS OTHERWISE SPECIFIED, PHOENIX WORKMANSHIP STANDARDS APPLY DIMENSIONS IN INCHES OR (METRIC)

DO NOT SCALE PRINTS
TOLERANCES ARE:
FRACTIONS: ± 1/64
DECIMALS: .XX ± .01
.XXX ± .003
ANGLES: ± 1/2°



APPROVALS	DATE
DRAWN JEM	11/19/2013
CHECKED RMB	6/4/2015
QA	
MFG	
ENGINEER LRG	3/28/2014
APPROVED RMB	6/4/2015

The PHOENIX Company of Chicago, Inc.

22 GREAT HILL RD., NAUGATUCK, CT 06770
WWW.PHOENIXOFCHICAGO.COM
PHONE: (800) 323-9562 FAX:(630) 206-1801

TITLE
PkZ® RECEPTACLE, DIRECT SOLDER TERMINATION

SIZE	FSCM	DWG NO	REV	PLATING OPT.
B	58167	156-1202-0860		A, B
SCALE	5 : 1	F.S.R. #	SHEET 1	OF 1