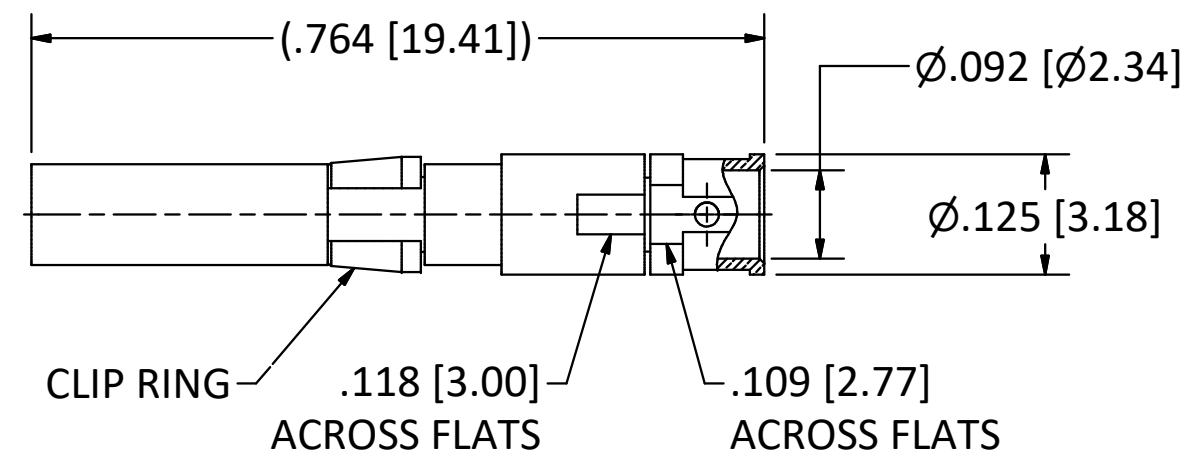
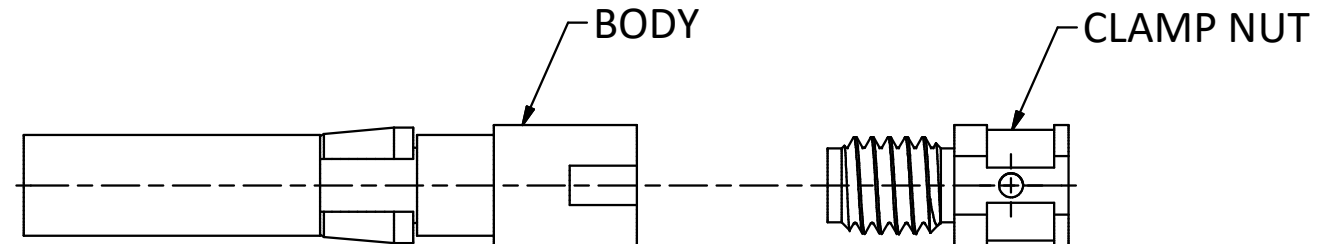


4

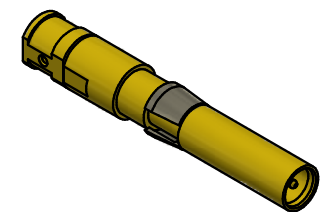
3

2

1



- NOTES:
- SPECIFICATIONS PER IDS-156.
 - CLAMP NUT SHIPPED LOOSE.
 - ACCOMMODATES RG-405 (.086 SEMI-RIGID) OR EQUIVALENT FLEXIBLE CABLE.
 - ELECTRICAL RESULTS WHEN MATED WITH 156 SERIES PkZ® PLUG:
 - FREQUENCY: DC TO 50 GHz.
 - VSWR (MATED): 1.40:1 (MAX) UP TO 40 GHz.
- HOUSING:** PRC AND CUSTOM, SIZE 16 CAVITY.



SCALE 2.5 : 1

REV	DESCRIPTION	DATE	BY
F	PER ECN 13341	3/27/20	JEM
E	PER ECN 12373	9/29/16	RMB
D	PER ECN 12357	9/6/16	RMB
C	PER ECN 12338	7/15/16	RMB
B	PER ECN 12283	2/15/16	RMB
A	REL. PER ECN 12276	1/28/16	RMB

This drawing embodies a proprietary design of The Phoenix Company of Chicago, Inc., Naugatuck, CT 06770. All design, manufacturing, reproduction, use, sale, and other rights regarding the same are expressly reserved. The information in this drawing may be covered completely or in part by patents and/or patents pending.

WARNING - THIS DOCUMENT CONTAINS TECHNICAL DATA WHOSE EXPORT IS RESTRICTED BY THE ARMS EXPORT CONTROL ACT (TITLE 22, U.S.C., SEC 2751, ET. SEQ.) OR THE EXPORT ADMINISTRATION ACT OF 1979, AS AMENDED, TITLE 50, U.S.C., APP 2401 ET SEQ. VIOLATIONS OF THESE EXPORT LAWS ARE SUBJECT TO SEVERE CRIMINAL PENALTIES. DISSEMINATE IN ACCORDANCE WITH PROVISIONS OF DOD DIRECTIVE 5230.25.

Filename: ver2\Autodesk Inventor Data Base\Assemblies\156 Series\156-1302-0860-CU.idw		
UNLESS OTHERWISE SPECIFIED, PHOENIX WORKMANSHIP STANDARDS APPLY DIMENSIONS IN INCHES OR (METRIC)	APPROVALS	DATE
	DRAWN JEM	1/26/2016
DO NOT SCALE PRINTS	CHECKED RMB	1/28/2016
	QA	
TOLERANCES ARE: FRACTIONS: ± 1/64 DECIMALS: .XX ± .01 .XXX ± .003 ANGLES: ± 1/2°	MFG	
	ENGINEER JEM	1/28/2016
	APPROVED RMB	1/28/2016

The PHOENIX Company of Chicago, Inc.				
22 GREAT HILL RD., NAUGATUCK, CT 06770 WWW.PHOENIXOFCHICAGO.COM PHONE: (800) 323-9562 FAX:(630) 206-1801				
TITLE SIZE 16 PkZ® RECEPTACLE, SOLDER/CLAMP TERMINATION				
SIZE B	FSCM 58167	DWG NO 156-1302-0860	REV F	PLATING OPT. A, B
SCALE 5 : 1	F.S.R. #	SHEET 1 OF 1		

4

3

2

1