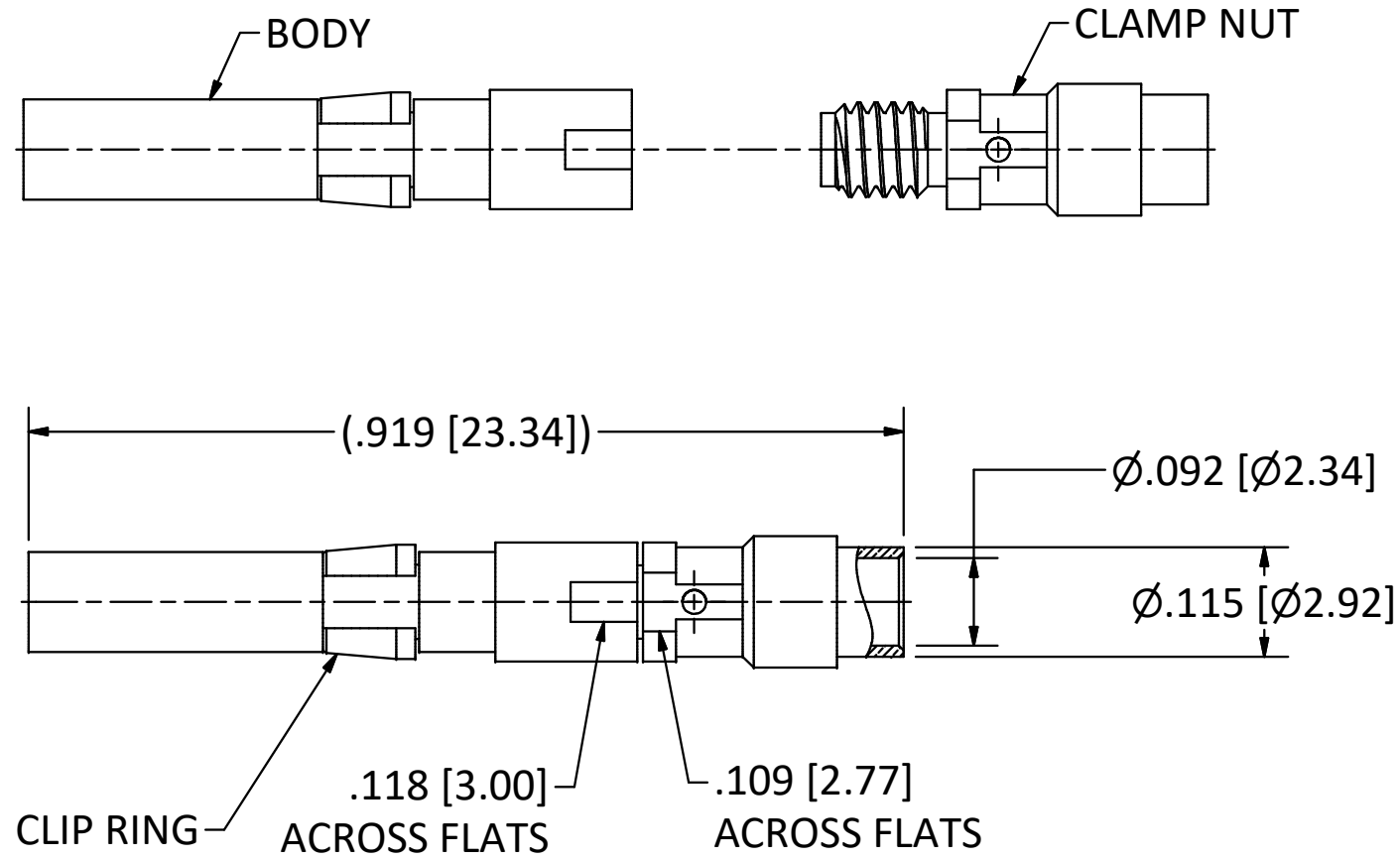


4

3

2

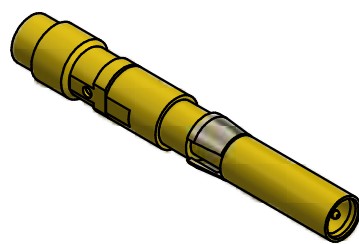
1



NOTES:

- 1. SPECIFICATIONS PER IDS-156.
- 2. CLAMP NUT SHIPPED LOOSE.
- 3. ACCOMMODATES RG-405 (.086 SEMI-RIGID) OR EQUIVALENT FLEXIBLE CABLE.
- 4. ELECTRICAL RESULTS WHEN MATED WITH 156 SERIES PkZ® PLUG:
 - a) FREQUENCY: DC TO 50 GHz.
 - b) VSWR: 1.40:1 (MAX) UP TO 40 GHz.

HOUSING: PRC AND CUSTOM, SIZE 16 CAVITY.



SCALE 2.5 : 1

<table border="1"> <tr><td>B</td><td>PER ECN 13341</td><td>3/27/20</td><td>JEM</td></tr> <tr><td>A</td><td>REL. PER ECN 12500</td><td>4/12/17</td><td>RMB</td></tr> <tr><td>REV</td><td>DESCRIPTION</td><td>DATE</td><td>BY</td></tr> </table>				B	PER ECN 13341	3/27/20	JEM	A	REL. PER ECN 12500	4/12/17	RMB	REV	DESCRIPTION	DATE	BY	<p>This drawing embodies a proprietary design of The Phoenix Company of Chicago, Inc., Naugatuck, CT 06770. All design, manufacturing, reproduction, use, sale, and other rights regarding the same are expressly reserved. The information in this drawing may be covered completely or in part by patents and/or patents pending.</p>		<p>WARNING - THIS DOCUMENT CONTAINS TECHNICAL DATA WHOSE EXPORT IS RESTRICTED BY THE ARMS EXPORT CONTROL ACT (TITLE 22, U.S.C., SEC 2751, ET. SEQ.) OR THE EXPORT ADMINISTRATION ACT OF 1979, AS AMENDED, TITLE 50, U.S.C., APP 2401 ET SEQ. VIOLATIONS OF THESE EXPORT LAWS ARE SUBJECT TO SEVERE CRIMINAL PENALTIES. DISSEMINATE IN ACCORDANCE WITH PROVISIONS OF DOD DIRECTIVE 5230.25.</p>		<p>Filename: ver2\Autodesk Inventor Data Base\Assemblies\156 Series\156-1302-0861-CU.idw</p> <table border="1"> <tr><th colspan="2">UNLESS OTHERWISE SPECIFIED, PHOENIX WORKMANSHIP STANDARDS APPLY DIMENSIONS IN INCHES OR (METRIC)</th></tr> <tr><td>APPROVALS</td><td>DATE</td></tr> <tr><td>DRAWN JEM</td><td>4/12/2017</td></tr> <tr><td>CHECKED RMB</td><td>4/12/2017</td></tr> <tr><td>QA</td><td></td></tr> <tr><td>MFG</td><td></td></tr> <tr><td>ENGINEER JEM</td><td>4/12/2017</td></tr> <tr><td>APPROVED RMB</td><td>4/12/2017</td></tr> </table> <p>DO NOT SCALE PRINTS</p> <p>TOLERANCES ARE: FRACTIONS: ± 1/64 DECIMALS: .XX ± .01 .XXX ± .003 ANGLES: ± 1/2°</p>		UNLESS OTHERWISE SPECIFIED, PHOENIX WORKMANSHIP STANDARDS APPLY DIMENSIONS IN INCHES OR (METRIC)		APPROVALS	DATE	DRAWN JEM	4/12/2017	CHECKED RMB	4/12/2017	QA		MFG		ENGINEER JEM	4/12/2017	APPROVED RMB	4/12/2017	<p>The PHOENIX Company of Chicago, Inc.</p> <p>22 GREAT HILL RD., NAUGATUCK, CT 06770 WWW.PHOENIXOFCHICAGO.COM</p> <p>PHONE: (800) 323-9562 FAX:(630) 206-1801</p>		<p>TITLE</p> <p>SIZE 16 PkZ® RECEPTACLE, SOLDER/CLAMP TERMINATION</p>	
B	PER ECN 13341	3/27/20	JEM																																						
A	REL. PER ECN 12500	4/12/17	RMB																																						
REV	DESCRIPTION	DATE	BY																																						
UNLESS OTHERWISE SPECIFIED, PHOENIX WORKMANSHIP STANDARDS APPLY DIMENSIONS IN INCHES OR (METRIC)																																									
APPROVALS	DATE																																								
DRAWN JEM	4/12/2017																																								
CHECKED RMB	4/12/2017																																								
QA																																									
MFG																																									
ENGINEER JEM	4/12/2017																																								
APPROVED RMB	4/12/2017																																								
				SIZE B	FSCM 58167	DWG NO 156-1302-0861	REV B	PLATING OPT. A, B																																	
				SCALE 5 : 1	F.S.R. #	SHEET 1 OF 1																																			

4

3

2

1