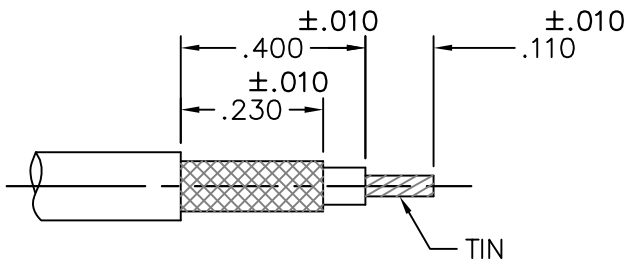


CABLE ASSEMBLY PROCEDURE		
P/N 16-0090-0675		
PAGE 1 OF 1		
DRAWN: DL	APPROVED: HN	02/22/95
FOR USE WITH RG179 CABLE		

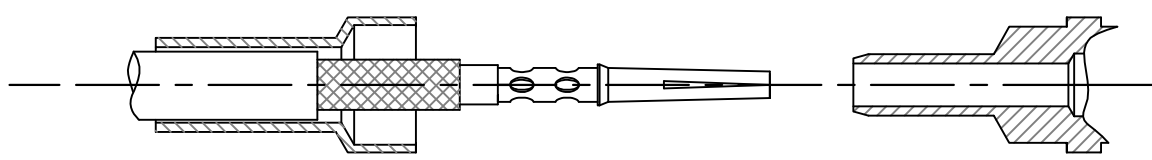
**PALCO**  
**CONNECTOR**

22 GREAT HILL ROAD, NAUGATUCK, CT. 06770  
PHONE: (203) 729-9090 FAX: (203) 723-1794

REV	DESCRIPTION	DATE	APPR
E	PER ECN 9728	01/05/09	JEM
F	PER ECN 10671	11/04/10	JEM
G	PER ECN 12325	06/17/16	RMB
H	PER ECN 12577	08/07/17	JEM

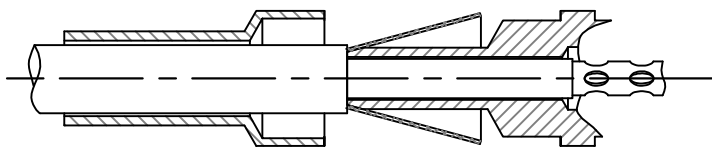


STEP 1. STRIP CABLE TO DIMENSIONS SHOWN. TIN CENTER CONDUCTOR.

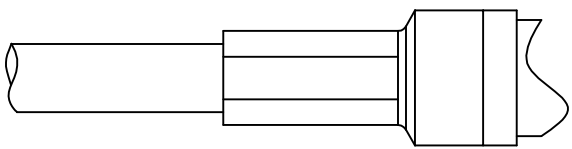


STEP 2. SLIDE FERRULE OVER JACKET. LOCATE AND CRIMP CENTER CONTACT TO CENTER CONDUCTOR OF CABLE USING EITHER:

- DANIELS MFG. CORP. HAND CRIMP TOOL FT8, SETTING #2 WITH PALCO CONNECTOR LOCATOR T0619;
- OR DANIELS MFG. CORP. PNEUMATIC CRIMP TOOL WA22AP, SETTING #4 WITH PALCO CONNECTOR LOCATOR T0612.



STEP 3. FLAIR BRAID OVER BODY BY ROTATING DIELECTRIC. SNAP CENTER INTO BODY. SLIDE FERRULE OVER BRAID AND SEAT OVER BODY.



STEP 4. CRIMP FERRULE USING EITHER:

- DANIELS MFG. CORP. HAND CRIMP TOOL HX4 (M22520/5-01) WITH Y196 CRIMP DIE, .128 HEX (M22520/5-03);
- OR DANIELS MFG. CORP. PNEUMATIC CRIMP TOOL HX23 WITH Y196 CRIMP DIE, .128 HEX (M22520/5-03).