
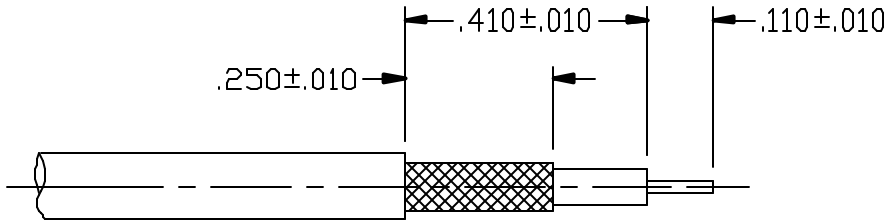
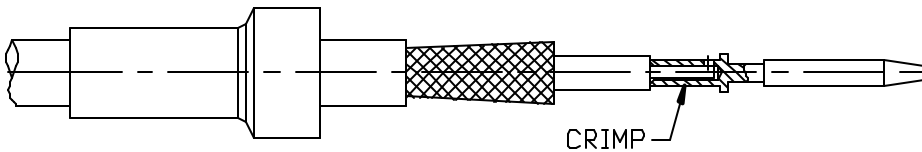


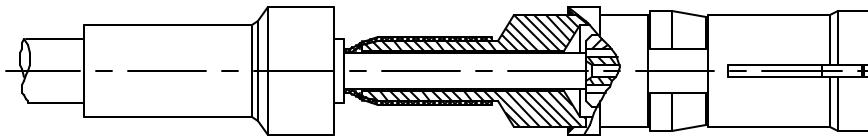
CABLE ASSEMBLY PROCEDURE		 22 GREAT HILL ROAD, NAUGATUCK, CT. 06770 PHONE: (203) 729-9090 FAX: (203) 723-1794	REV	DESCRIPTION	DATE	APPR
P/N	16-1090-0673		B	PER ECN 4658	08/25/98	HN
PAGE 1 OF 1	DATE: 08/25/98		C	PER ECN 6733	09/17/02	HN
DRAWN: YS	APPROVED: HN		D	PER ECN 7660	10/06/04	JEM
FOR USE WITH RG-179 CABLE			E	PER ECN 10676	11/04/10	JEM



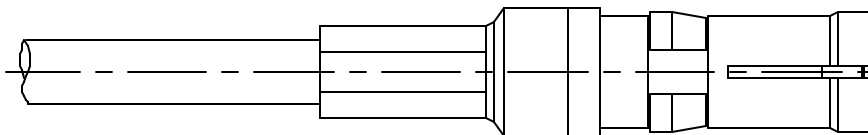
STEP 1
STRIP CABLE TO DIMENSIONS SHOWN. TIN CENTER CONDUCTOR.



STEP 2
PLACE CONTACT ONTO CENTER CONDUCTOR OF CABLE LOCATED AS SHOWN AND CRIMP INTO POSITION USING DANIELS FT8 CRIMPER, SETTING #1 AND PALCO POSITIONER T0603. SLIDE FERRULE OVER CABLE. ROTATE DIELECTRIC TO FLAIR BRAID.



STEP 3
INSERT CONNECTOR BARREL BETWEEN CABLE BRAID AND DIELECTRIC UNTIL CONTACT SNAPS INTO POSITION.



STEP 4
SLIDE FERRULE UP AGAINST SHOULDER OF BODY AND CRIMP USING .128 HEX DIE (M22520/5-03).