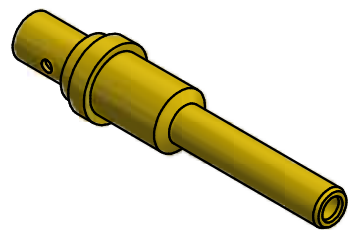


NOTES:

1. SPECIFICATIONS PER IDS-168.
 2. ACCOMMODATES RG-405 (.086 SEMI-RIGID) OR EQUIVALENT FLEXIBLE CABLE.
- HOUSING:** ARINC 600 CONNECTOR PER MIL-C-83527/3, SIZE 12 CAVITY.



SCALE 2.5 : 1

REV	DESCRIPTION	DATE	BY
G	PER ECN 13349	6/11/2019	JEM
F	PER ECN 13163	10/26/2018	JEM
E	PER ECN 12707	11/27/2017	JEM
D	PER ECN 12668	10/12/2017	JEM
C	PER ECN 12294	3/15/2016	JEM
B	PER ECN 12240	10/28/15	RMB
A	PER ECN 12197	8/12/2015	RMB

This drawing embodies a proprietary design of The Phoenix Company of Chicago, Inc., Naugatuck, CT 06770. All design, manufacturing, reproduction, use, sale, and other rights regarding the same are expressly reserved. The information in this drawing may be covered completely or in part by patents and/or patents pending.

WARNING - THIS DOCUMENT CONTAINS TECHNICAL DATA WHOSE EXPORT IS RESTRICTED BY THE ARMS EXPORT CONTROL ACT (TITLE 22, U.S.C., SEC 2751, ET. SEQ.) OR THE EXPORT ADMINISTRATION ACT OF 1979, AS AMENDED, TITLE 50, U.S.C., APP 2401 ET SEQ. VIOLATIONS OF THESE EXPORT LAWS ARE SUBJECT TO SEVERE CRIMINAL PENALTIES. DISSEMINATE IN ACCORDANCE WITH PROVISIONS OF DOD DIRECTIVE 5230.25.

Filename: ver2\Autodesk Inventor Data Base\Assemblies\168 Series\168-0020-0860-CU.idw

UNLESS OTHERWISE SPECIFIED, PHOENIX WORKMANSHIP STANDARDS APPLY DIMENSIONS IN INCHES OR (METRIC)

DO NOT SCALE PRINTS
TOLERANCES ARE:
FRACTIONS: $\pm 1/64$
DECIMALS: $.XX \pm .01$
 $.XXX \pm .003$
ANGLES: $\pm 1/2^\circ$

$\sqrt{32}$

APPROVALS	DATE
DRAWN jmaturo	7/17/2013
CHECKED	
QA	
MFG	
ENGINEER	
APPROVED	

The PHOENIX Company of Chicago, Inc.

22 GREAT HILL RD., NAUGATUCK, CT 06770
WWW.PHOENIXOFCHICAGO.COM
PHONE: (800) 323-9562 FAX:(630) 206-1801

TITLE				
PKZ [®] PLUG, DIRECT SOLDER TERMINATION				
SIZE	FSCM	DWG NO	REV	PLATING OPT.
B	58167	168-0020-0860	G	
SCALE	5 : 1	F.S.R. #	SHEET 1	OF 1