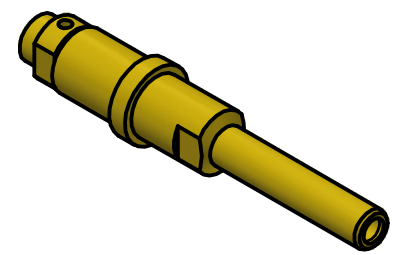


- NOTES:
1. SPECIFICATIONS PER IDS-168.
 2. SOLDER NUT SHIPPED LOOSE.
 3. ACCOMMODATES RG-405 (.086 SEMI-RIGID) OR EQUIVALENT FLEXIBLE CABLE.
 4. ELECTRICAL RESULTS WHEN MATED WITH 168 SERIES PKZ® RECEPTACLE:
 - a) FREQUENCY: DC TO 50 GHz.
 - b) VSWR: VSWR: 1.40 : 1
 5. HOUSING: ARINC 600 RECEPTACLE CONNECTOR SHELL CONTAINING SIZE 12 CAVITY (REF: MIL-DTL-83527B).
 6. DOES NOT MATE WITH OTHER INDUSTRY-STANDARD SIZE 12 CONTACTS.



SCALE 2.5 : 1

<table><tr><td>C</td><td>PER ECN 14466</td><td>11/26/2024</td><td>DW</td></tr><tr><td>B</td><td>PER ECN 14384</td><td>4/8/2024</td><td>SPS</td></tr><tr><td>A</td><td>PER ECN 13509</td><td>4/7/2020</td><td>JEM</td></tr><tr><td>01</td><td>PRILIMINARY</td><td>7/01/2019</td><td>JEM</td></tr><tr><td>REV</td><td>DESCRIPTION</td><td>DATE</td><td>BY</td></tr></table>				C	PER ECN 14466	11/26/2024	DW	B	PER ECN 14384	4/8/2024	SPS	A	PER ECN 13509	4/7/2020	JEM	01	PRILIMINARY	7/01/2019	JEM	REV	DESCRIPTION	DATE	BY	<p>This drawing embodies a proprietary design of The Phoenix Company of Chicago, Inc., Naugatuck, CT 06770. All design, manufacturing, reproduction, use, sale, and other rights regarding the same are expressly reserved. The information in this drawing may be covered completely or in part by patents and/or patents pending.</p>		<p>WARNING - THIS DOCUMENT CONTAINS TECHNICAL DATA WHOSE EXPORT IS RESTRICTED BY THE ARMS EXPORT CONTROL ACT (TITLE 22, U.S.C., SEC 2751, ET. SEQ.) OR THE EXPORT ADMINISTRATION ACT OF 1979, AS AMENDED, TITLE 50, U.S.C., APP 2401 ET SEQ. VIOLATIONS OF THESE EXPORT LAWS ARE SUBJECT TO SEVERE CRIMINAL PENALTIES. DISSEMINATE IN ACCORDANCE WITH PROVISIONS OF DOD DIRECTIVE 5230.25.</p>		<table><tr><td colspan="3">UNLESS OTHERWISE SPECIFIED, PHOENIX WORKMANSHIP STANDARDS APPLY DIMENSIONS IN INCHES OR [METRIC]</td></tr><tr><td colspan="3">DO NOT SCALE PRINTS</td></tr><tr><td colspan="3">TOLERANCES ARE: FRACTIONS: ± 1/64 DECIMALS: .XX ± .01 .XXX ± .003 ANGLES: ± 1/2°</td></tr><tr><td colspan="3">32√</td></tr><tr><td colspan="3"></td></tr></table>			UNLESS OTHERWISE SPECIFIED, PHOENIX WORKMANSHIP STANDARDS APPLY DIMENSIONS IN INCHES OR [METRIC]			DO NOT SCALE PRINTS			TOLERANCES ARE: FRACTIONS: ± 1/64 DECIMALS: .XX ± .01 .XXX ± .003 ANGLES: ± 1/2°			32√						<p>The PHOENIX Company of Chicago, Inc.</p> <p>22 GREAT HILL RD., NAUGATUCK, CT 06770 WWW.PHOENIXOFCHICAGO.COM PHONE: (800) 323-9562 FAX:(630) 206-1801</p>		
				C	PER ECN 14466	11/26/2024	DW																																									
				B	PER ECN 14384	4/8/2024	SPS																																									
				A	PER ECN 13509	4/7/2020	JEM																																									
				01	PRILIMINARY	7/01/2019	JEM																																									
REV	DESCRIPTION	DATE	BY																																													
UNLESS OTHERWISE SPECIFIED, PHOENIX WORKMANSHIP STANDARDS APPLY DIMENSIONS IN INCHES OR [METRIC]																																																
DO NOT SCALE PRINTS																																																
TOLERANCES ARE: FRACTIONS: ± 1/64 DECIMALS: .XX ± .01 .XXX ± .003 ANGLES: ± 1/2°																																																
32√																																																
TITLE <p>PKz® PLUG, SOLDER/CLAMP TERMINATION</p>																																																
			SIZE B	FSCM 58167	DWG NO 168-0030-0860	REV C	PLATING OPT. A, C																																									
			SCALE 5 : 1		F.S.R. #		SHEET 1 OF 1																																									
			APPROVED JEM		7/1/2019																																											
			APPROVALS			DATE																																										
			DRAWN SPS			7/1/2019																																										
			CHECKED JEM			7/1/2019																																										
			QA																																													
			MFG																																													
			ENGINEER SPS			7/1/2019																																										
			APPROVED JEM			7/1/2019																																										