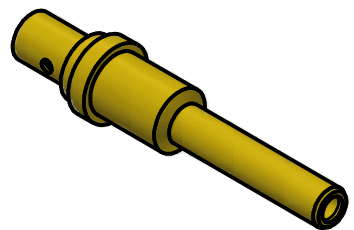


NOTES:

1. SPECIFICATIONS PER IDS-168L.
2. ACCOMMODATES RG-405 (.086 SEMI-RIGID) OR EQUIVALENT FLEXIBLE CABLE.
3. FREQUENCY: DC TO 18 GHz.
4. HOUSING: ARINC 600 RECEPTACLE CONNECTOR SHELL CONTAINING SIZE 12 CAVITY (REF: MIL-DTL-83527B).
5. **DOES NOT MATE WITH OTHER INDUSTRY-STANDARD SIZE 12 CONTACTS.**



SCALE 2.5 : 1

				<p>THE INFORMATION AND DESIGNS DISCLOSED IN THIS DOCUMENT ARE CONFIDENTIAL AND/OR PROPRIETARY TO THE PHOENIX COMPANY OF CHICAGO INC. AND MAY NOT BE USED FOR MANUFACTURING, REPRODUCED, DISCLOSED TO OTHERS OR FOR ANY OTHER PURPOSE WITHOUT THE EXPRESS WRITTEN CONSENT OF THE PHOENIX COMPANY OF CHICAGO INC.</p>	<p>WARNING - THIS DOCUMENT CONTAINS TECHNICAL DATA WHOSE EXPORT IS RESTRICTED BY THE ARMS EXPORT CONTROL ACT (TITLE 22, U.S.C., SEC 2751, ET. SEQ.) OR THE EXPORT ADMINISTRATION ACT OF 1979, AS AMENDED, TITLE 50, U.S.C., APP 2401 ET SEQ. VIOLATIONS OF THESE EXPORT LAWS ARE SUBJECT TO SEVERE CRIMINAL PENALTIES. DISSEMINATE IN ACCORDANCE WITH PROVISIONS OF DOD DIRECTIVE 5230.25.</p>	<p>UNLESS OTHERWISE SPECIFIED, PHOENIX WORKMANSHIP STANDARDS APPLY DIMENSIONS IN INCHES OR (METRIC)</p>		<p>APPROVALS</p>		<p>DATE</p>		<p>The PHOENIX Company of Chicago, Inc.</p> <p>22 GREAT HILL RD., NAUGATUCK, CT 06770 WWW.PHOENIXOFCHICAGO.COM</p> <p>PHONE: (800) 323-9562 FAX:(630) 206-1801</p>				
<p>DO NOT SCALE PRINTS</p>		<p>TOLERANCES ARE: FRACTIONS: $\pm 1/64$ DECIMALS: $.XX \pm .01$ $.XXX \pm .003$ ANGLES: $\pm 1/2^\circ$</p>				<p>DRAWN RA</p>	<p>4/1/2024</p>	<p>CHECKED SPS</p>		<p>4/1/2024</p>	<p>QA</p>		<p>TITLE PKZ[®] PLUG, DIRECT SOLDER TERMINATION</p>			
<p>ENGINEER JEM</p>		<p>4/1/2024</p>		<p>APPROVED SPS</p>		<p>4/1/2024</p>		<p>SIZE B</p>	<p>FSCM 58167</p>	<p>DWG NO 168L-0020-0860</p>	<p>REV A</p>	<p>PLATING OPT. A, C</p>	<p>SCALE</p>		<p>F.S.R. #</p>	<p>SHEET 1 OF 1</p>