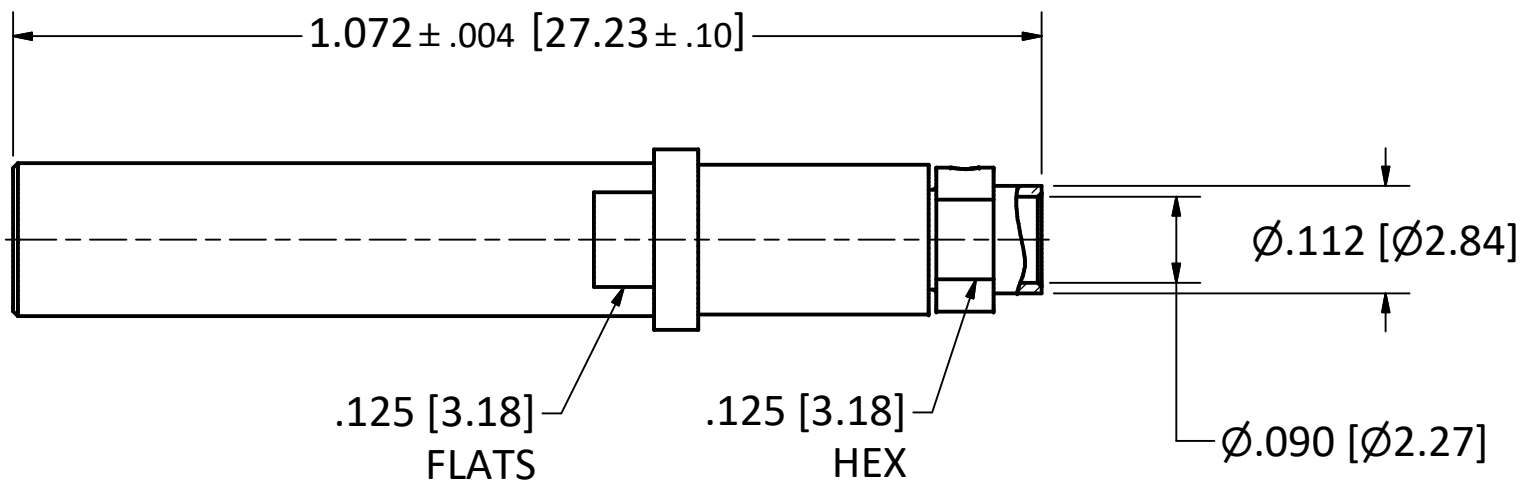
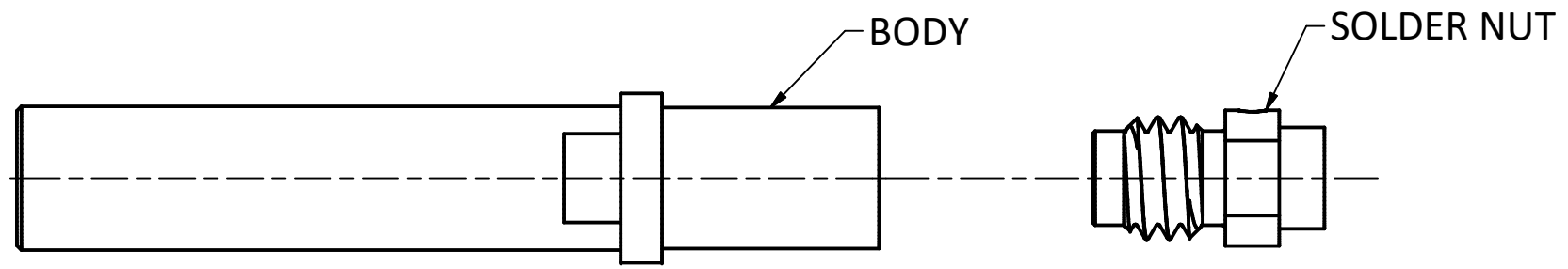


4

3

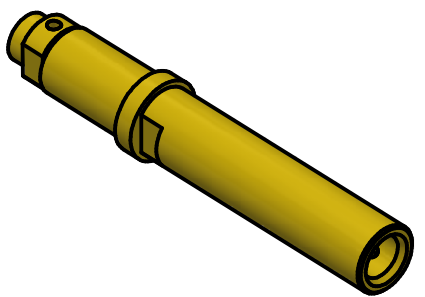
2

1



NOTES:

- 1. SPECIFICATIONS PER IDS-168L.
- 2. SOLDER NUT SHIPPED LOOSE.
- 3. ACCOMMODATES RG-405 (.086 SEMI-RIGID) OR EQUIVALENT FLEXIBLE CABLE.
- 4. FREQUENCY: DC TO 18 GHz.
- 5. HOUSING: ARINC 600 PLUG CONNECTOR SHELL CONTAINING SIZE 12 CAVITY (REF: MIL-DTL-83527B).
- 6. **DOES NOT MATE WITH OTHER INDUSTRY-STANDARD SIZE 12 CONTACTS.**



SCALE 2.5 : 1

				THE INFORMATION AND DESIGNS DISCLOSED IN THIS DOCUMENT ARE CONFIDENTIAL AND/OR PROPRIETARY TO THE PHOENIX COMPANY OF CHICAGO INC. AND MAY NOT BE USED FOR MANUFACTURING, REPRODUCED, DISCLOSED TO OTHERS OR FOR ANY OTHER PURPOSE WITHOUT THE EXPRESS WRITTEN CONSENT OF THE PHOENIX COMPANY OF CHICAGO INC.	WARNING - THIS DOCUMENT CONTAINS TECHNICAL DATA WHOSE EXPORT IS RESTRICTED BY THE ARMS EXPORT CONTROL ACT (TITLE 22, U.S.C., SEC 2751, ET. SEQ.) OR THE EXPORT ADMINISTRATION ACT OF 1979, AS AMENDED, TITLE 50, U.S.C., APP 2401 ET SEQ. VIOLATIONS OF THESE EXPORT LAWS ARE SUBJECT TO SEVERE CRIMINAL PENALTIES. DISSEMINATE IN ACCORDANCE WITH PROVISIONS OF DOD DIRECTIVE 5230.25.	UNLESS OTHERWISE SPECIFIED, PHOENIX WORKMANSHIP STANDARDS APPLY DIMENSIONS IN INCHES OR (METRIC)		APPROVALS DATE		<i>The PHOENIX Company of Chicago, Inc.</i> 22 GREAT HILL RD., NAUGATUCK, CT 06770 WWW.PHOENIXOFCHICAGO.COM PHONE: (800) 323-9562 FAX:(630) 206-1801				
A		PER ECN 14383	4/9/2024			SPS	DO NOT SCALE PRINTS		DRAWN					4/8/2024
REV	DESCRIPTION	DATE	BY	TOLERANCES ARE: FRACTIONS: ± 1/64 DECIMALS: .XXX ± .003 ANGLES: ± 1/2°		QA	CHECKED	4/8/2024	SIZE		FSCM	DWG NO	REV	PLATING OPT.
				$\sqrt[32]{}$		MFG	SPS	4/8/2024	B	58167	168L-1030-0860	A	A, C	
						ENGINEER	APPROVED	4/8/2024	SCALE		F.S.R. #	SHEET 1 OF 1		

4

3

2

1