

4

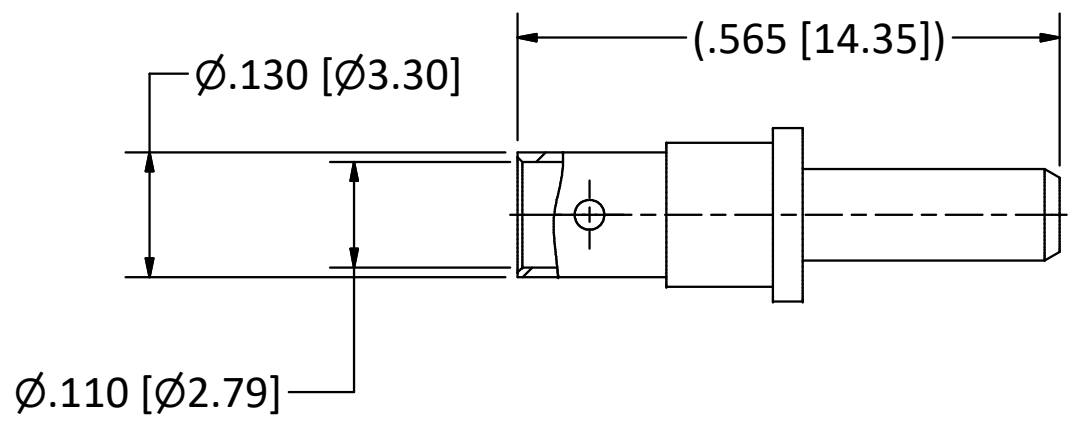
3

2

1

B

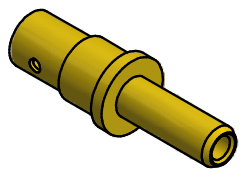
B



NOTES:

- 1. SPECIFICATIONS PER IDS-178.
- 2. ACCOMMODATES HP-120S CABLE.

**HOUSING:** MIL-C-38999 SERIES I-IV AND MIGHTY MOUSE SERIES 80, SIZE 12 CAVITY.



SCALE 2.5 : 1

4

3

2

1

A

A

				<p>This drawing embodies a proprietary design of The Phoenix Company of Chicago, Inc., Naugatuck, CT 06770. All design, manufacturing, reproduction, use, sale, and other rights regarding the same are expressly reserved. The information in this drawing may be covered completely or in part by patents and/or patents pending.</p>	<p>WARNING - THIS DOCUMENT CONTAINS TECHNICAL DATA WHOSE EXPORT IS RESTRICTED BY THE ARMS EXPORT CONTROL ACT (TITLE 22, U.S.C., SEC 2751, ET. SEQ.) OR THE EXPORT ADMINISTRATION ACT OF 1979, AS AMENDED, TITLE 50, U.S.C., APP 2401 ET SEQ. VIOLATIONS OF THESE EXPORT LAWS ARE SUBJECT TO SEVERE CRIMINAL PENALTIES. DISSEMINATE IN ACCORDANCE WITH PROVISIONS OF DOD DIRECTIVE 5230.25.</p>	<p>Filename: \\Autodesk Inventor Data Base\Assemblies\78 Series\78-1080-0670-CU-Layout for C Sized Drawing.idw</p>		<p><b>The PHOENIX Company of Chicago, Inc.</b></p> <p>22 GREAT HILL RD., NAUGATUCK, CT 06770          WWW.PHOENIXOFCHICAGO.COM          PHONE: (800) 323-9562 FAX:(630) 206-1801</p>																			
<p>UNLESS OTHERWISE SPECIFIED, PHOENIX WORKMANSHIP STANDARDS APPLY DIMENSIONS IN INCHES OR (METRIC)</p> <p>DO NOT SCALE PRINTS</p> <p>TOLERANCES ARE:          FRACTIONS: <math>\pm 1/64</math>          DECIMALS: <math>.XX \pm .01</math>  <math>.XXX \pm .003</math>          ANGLES: <math>\pm 1/2^\circ</math></p>		<table border="1"> <tr><th>APPROVALS</th><th>DATE</th></tr> <tr><td>DRAWN</td><td></td></tr> <tr><td>SPS</td><td>6/10/2019</td></tr> <tr><td>CHECKED</td><td></td></tr> <tr><td>JEM</td><td>6/10/2019</td></tr> <tr><td>QA</td><td></td></tr> <tr><td>MFG</td><td></td></tr> <tr><td>ENGINEER</td><td></td></tr> <tr><td>SPS</td><td>6/10/2019</td></tr> <tr><td>APPROVED</td><td></td></tr> <tr><td>JEM</td><td>6/10/2019</td></tr> </table>	APPROVALS			DATE	DRAWN		SPS	6/10/2019	CHECKED		JEM	6/10/2019	QA		MFG		ENGINEER		SPS	6/10/2019	APPROVED		JEM	6/10/2019	<p>TITLE</p> <p><b>PKZ® PLUG, DIRECT SOLDER TERMINATION</b></p>
APPROVALS	DATE																										
DRAWN																											
SPS	6/10/2019																										
CHECKED																											
JEM	6/10/2019																										
QA																											
MFG																											
ENGINEER																											
SPS	6/10/2019																										
APPROVED																											
JEM	6/10/2019																										
01	PRELIMINARY	6/10/19	JEM	SIZE	FSCM	DWG NO	REV	PLATING OPT.																			
REV	DESCRIPTION	DATE	BY	B	58167	<b>178-0021-1040</b>	01	A																			
				SCALE	5 : 1	F.S.R. #	SHEET 1 OF 1																				

4

3

2

1