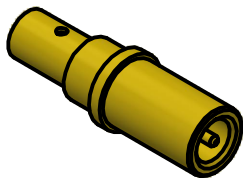


- NOTES:
- 1. SPECIFICATIONS PER IDS-178.
  - 2. ACCOMMODATES RG-405 (.086 SEMI-RIGID) OR EQUIVALENT FLEXIBLE CABLE.
  - 3. ELECTRICAL RESULTS WHEN MATED TO 178 SERIES PkZ® PLUG:
    - a) FREQUENCY: DC TO 40 GHz.
    - b) VSWR: 1.25 : 1
  - 4. HOUSING: MIL-DTL-38999 SERIES II AND MIGHTY MOUSE SERIES 80, SIZE 12 CAVITY.
  - 5. DOES NOT MATE WITH OTHER INDUSTRY-STANDARD SIZE 12 CONTACTS.



SCALE 2.5 : 1

				<p>This drawing embodies a proprietary design of The Phoenix Company of Chicago, Inc., Naugatuck, CT 06770. All design, manufacturing, reproduction, use, sale, and other rights regarding the same are expressly reserved. The information in this drawing may be covered completely or in part by patents and/or patents pending.</p>	<p>WARNING - THIS DOCUMENT CONTAINS TECHNICAL DATA WHOSE EXPORT IS RESTRICTED BY THE ARMS EXPORT CONTROL ACT (TITLE 22, U.S.C., SEC 2751, ET. SEQ.) OR THE EXPORT ADMINISTRATION ACT OF 1979, AS AMENDED, TITLE 50, U.S.C., APP 2401 ET SEQ. VIOLATIONS OF THESE EXPORT LAWS ARE SUBJECT TO SEVERE CRIMINAL PENALTIES. DISSEMINATE IN ACCORDANCE WITH PROVISIONS OF DOD DIRECTIVE 5230.25.</p>				<p><i>The <b>PHOENIX</b> Company of Chicago, Inc.</i></p> <p>22 GREAT HILL RD., NAUGATUCK, CT 06770 WWW.PHOENIXOFCHICAGO.COM PHONE: (800) 323-9562 FAX:(630) 206-1801</p>				
<p>UNLESS OTHERWISE SPECIFIED, PHOENIX WORKMANSHIP STANDARDS APPLY DIMENSIONS IN INCHES OR [METRIC]</p> <p>DO NOT SCALE PRINTS</p> <p>TOLERANCES ARE: FRACTIONS: ± 1/64 DECIMALS: .XX ± .01 .XXX ± .003 ANGLES: ± 1/2°</p> <p>32√</p>		APPROVALS	DATE			<p>TITLE</p> <p>PkZ® RECEPTACLE, DIRECT SOLDER TERMINATION</p>							
		DRAWN											
		SPS	7/10/2019										
		CHECKED											
		JEM	7/10/2019										
		QA											
		MFG											
		ENGINEER											
		SPS	7/10/2019										
		APPROVED											
		JEM	7/10/2019										
					SIZE	FSCM	DWG NO		REV	PLATING OPT.			
					B	58167	178-1023-0863		B	A			
					SCALE		5 : 1		F.S.R. #		SHEET 1 OF 1		

B	PER ECN 14332	12/19/2024	DW
A	REL PER ECN 13396	7/10/19	JEM
REV	DESCRIPTION	DATE	BY