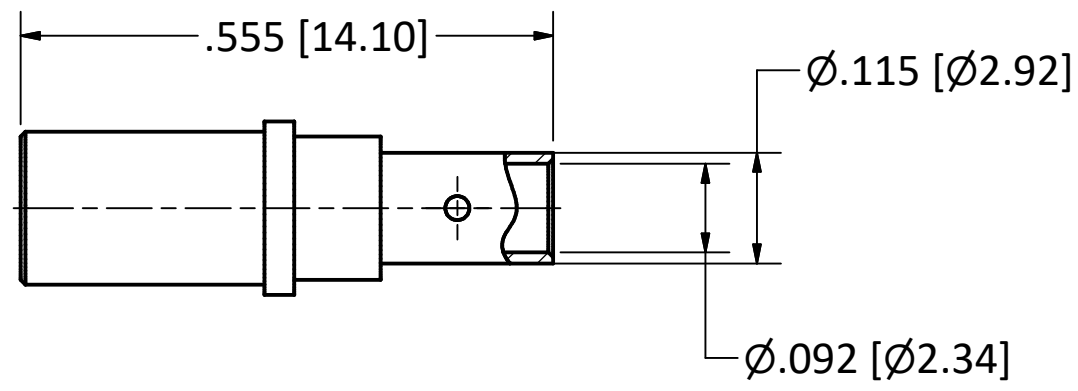
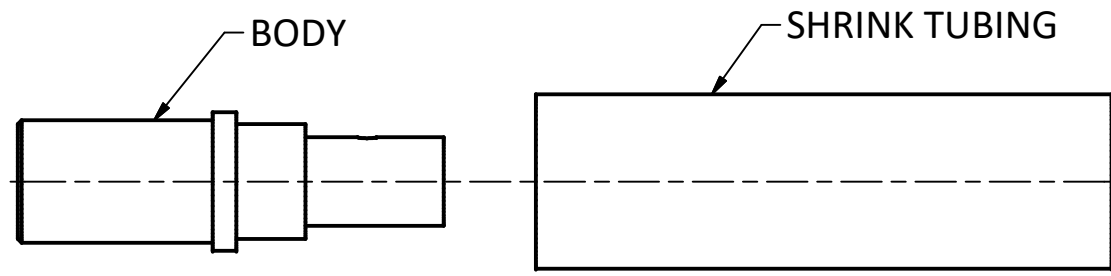


4

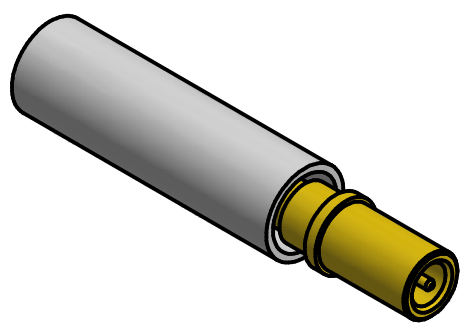
3

2

1



- NOTES:
1. SPECIFICATIONS PER IDS-178L.
 2. SHRINK TUBING SUPPLIED LOOSE.
 3. ACCOMMODATES RG-405 (.086 SEMI-RIGID) OR EQUIVALENT FLEXIBLE CABLE.
 4. FREQUENCY: DC TO 18 GHZ.
 5. HOUSING: MIL-C-38999 SERIES II AND MIGHTY MOUSE SERIES 80, SIZE 12 CAVITY.
 6. DOES NOT MATE WITH OTHER INDUSTRY-STANDARD SIZE 12 CONTACTS.



SCALE 2.5 : 1

				<p>THE INFORMATION AND DESIGNS DISCLOSED IN THIS DOCUMENT ARE CONFIDENTIAL AND/OR PROPRIETARY TO THE PHOENIX COMPANY OF CHICAGO INC. AND MAY NOT BE USED FOR MANUFACTURING, REPRODUCED, DISCLOSED TO OTHERS OR FOR ANY OTHER PURPOSE WITHOUT THE EXPRESS WRITTEN CONSENT OF THE PHOENIX COMPANY OF CHICAGO INC.</p>	<p>WARNING - THIS DOCUMENT CONTAINS TECHNICAL DATA WHOSE EXPORT IS RESTRICTED BY THE ARMS EXPORT CONTROL ACT (TITLE 22, U.S.C., SEC 2751, ET. SEQ.) OR THE EXPORT ADMINISTRATION ACT OF 1979, AS AMENDED, TITLE 50, U.S.C., APP 2401 ET SEQ. VIOLATIONS OF THESE EXPORT LAWS ARE SUBJECT TO SEVERE CRIMINAL PENALTIES. DISSEMINATE IN ACCORDANCE WITH PROVISIONS OF DOD DIRECTIVE 5230.25.</p>	UNLESS OTHERWISE SPECIFIED, PHOENIX WORKMANSHIP STANDARDS APPLY DIMENSIONS IN INCHES OR (METRIC)		APPROVALS		DATE	<p>The PHOENIX Company of Chicago, Inc.</p> <p>22 GREAT HILL RD., NAUGATUCK, CT 06770 WWW.PHOENIXOFCHICAGO.COM</p> <p>PHONE: (800) 323-9562 FAX:(630) 206-1801</p>																		
DO NOT SCALE PRINTS		TOLERANCES ARE: FRACTIONS: ± 1/64 DECIMALS: .XX ± .01 .XXX ± .003 ANGLES: ± 1/2'				<table border="1"> <tr><td>DRAWN</td><td>RA</td><td>4/12/2024</td></tr> <tr><td>CHECKED</td><td>SPS</td><td>4/12/2024</td></tr> <tr><td>QA</td><td></td><td></td></tr> <tr><td>MFG</td><td></td><td></td></tr> <tr><td>ENGINEER</td><td>SPS</td><td>4/12/2024</td></tr> <tr><td>APPROVED</td><td>SPS</td><td>4/12/2024</td></tr> </table>		DRAWN	RA	4/12/2024					CHECKED	SPS	4/12/2024	QA			MFG			ENGINEER	SPS	4/12/2024	APPROVED	SPS	4/12/2024
DRAWN	RA	4/12/2024																											
CHECKED	SPS	4/12/2024																											
QA																													
MFG																													
ENGINEER	SPS	4/12/2024																											
APPROVED	SPS	4/12/2024																											
REV		DESCRIPTION		DATE		BY		SIZE		FSCM		DWG NO		REV		PLATING OPT.													
A		REL PER ECN 14390		4/18/2024		SPS		B		58167		178L-1023-0863		A		A													
SCALE		5 : 1		F.S.R. #		SHEET 1 OF 1																							

4

3

2

1