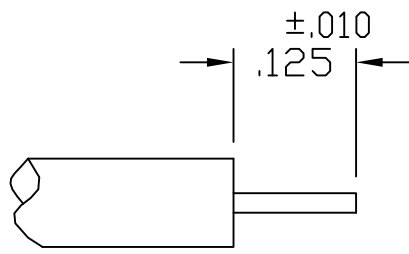


|                             |                |
|-----------------------------|----------------|
| CABLE ASSEMBLY PROCEDURE    |                |
| P/N                         | 22-0200-0868   |
| PAGE 1 OF 1                 | DATE: 06/28/02 |
| DRAWN: RVR                  | APPROVED: HN   |
| FOR USE WITH .086 S/R CABLE |                |

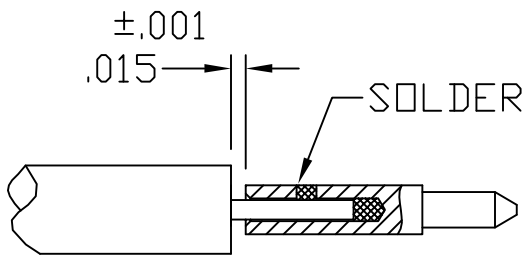
The **PHOENIX** Company of Chicago™  
 22 GREAT HILL RD., NAUGATUCK, CT 06770  
 WWW.PHOENIXOFCHICAGO.COM  
 PHONE: (203) 729-9090 FAX: (203) 723-1794

| REV | DESCRIPTION   | DATE     | APPR |
|-----|---------------|----------|------|
| A   | PER ECN 6669  | 06/28/02 | HN   |
| B   | PER ECN 6902  | 02/14/03 | HN   |
| C   | PER ECN 9391  | 05/15/08 | JEM  |
| D   | PER ECN 13698 | 2/24/20  | JEM  |

STEP 1  
 TRIM CABLE TO DIMENSION SHOWN.



STEP 2  
 SOLDER CENTER CONTACT TO CENTER CONDUCTOR.



STEP 3  
 INSERT CABLE INTO BODY UNTIL OUTER CONDUCTOR IS FLUSH WITH BODY SHOULDER. SOLDER OUTER CONDUCTOR AS SHOWN. CLEAN SOLDER JOINT.

