

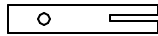
| | |
|---------------------------|----------------|
| CABLE ASSEMBLY PROCEDURE | |
| P/N | 22-1200-0868 |
| PAGE 1 OF 1 | DATE: 02/26/03 |
| DRAWN: YT | APPROVED: HN |
| FOR USE WITH RG-405 CABLE | |

PALEO
CONNECTOR

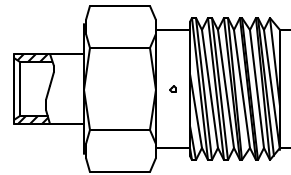
22 GREAT HILL ROAD, NAUGATUCK, CT. 06770
PHONE: (203) 729-9090 FAX: (203) 723-1794

| REV | DESCRIPTION | DATE | APPR |
|-----|---------------|----------|------|
| A | REL. ECN 6913 | 02/26/03 | HN |
| B | REL. ECN 8699 | 10/09/06 | JM |
| C | PER ECN 10864 | 02/14/11 | JEM |

CONTACT

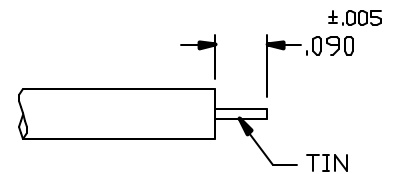


BODY S/A



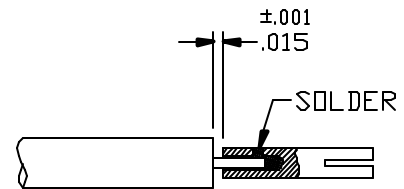
STEP 1

TRIM CABLE TO DIMENSIONS SHOWN.
TIN CENTER CONDUCTOR.



STEP 2

SOLDER CENTER CONTACT TO
CENTER CONDUCTOR AS SHOWN USING .015±.001 SHIM.
CLEAN SOLDER JOINT.



STEP 3

PLACE LOOSE ASSEMBLY IN FIXTURE BASE AS SHOWN.
TIGHTEN CLAMP SCREW TO SECURE CABLE.
TIGHTEN LOCATOR TOOL TO SEAT CABLE FIRMLY.
MAINTAIN POSITION OF HOUSING FIRMLY AGAINST LOCATOR TOOL
AND SOLDER CABLE JACKET TO BODY.
AVOID EXCESSIVE HEAT. CLEAN SOLDERED AREA.

NOTE: FIXTURE SHOULD BE CLAMPED VERTICAL IN A VISE
TO KEEP HOUSING SEATED AGAINST LOCATOR TOOL.

