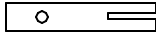
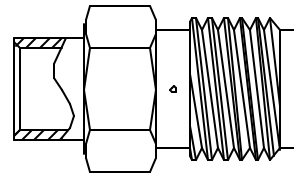


CABLE ASSEMBLY PROCEDURE			REV	DESCRIPTION	DATE	APPR
P/N	22-1200-1418		B	PER ECN 10864	02/14/11	JEM
PAGE 1 OF 1	DATE: 02/15/11					
DRAWN: MS	APPROVED: JEM					
FOR USE WITH RG-402 CABLE		22 GREAT HILL ROAD, NAUGATUCK, CT. 06770				
		PHONE: (203) 729-9090 FAX: (203) 723-1794				

CONTACT

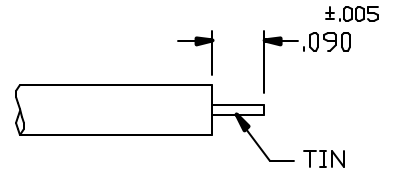


BODY S/A



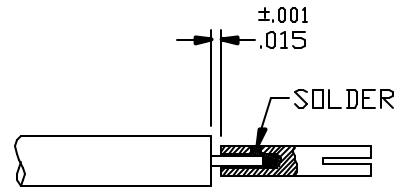
STEP 1

TRIM CABLE TO DIMENSIONS SHOWN.
TIN CENTER CONDUCTOR.



STEP 2

SOLDER CENTER CONTACT TO
CENTER CONDUCTOR AS SHOWN USING .015±.001 SHIM.
CLEAN SOLDER JOINT.



STEP 3

PLACE LOOSE ASSEMBLY IN FIXTURE BASE AS SHOWN.
TIGHTEN CLAMP SCREW TO SECURE CABLE.
TIGHTEN LOCATOR TOOL TO SEAT CABLE FIRMLY.
MAINTAIN POSITION OF HOUSING FIRMLY AGAINST LOCATOR TOOL
AND SOLDER CABLE JACKET TO BODY.
AVOID EXCESSIVE HEAT. CLEAN SOLDERED AREA.

NOTE: FIXTURE SHOULD BE CLAMPED VERTICAL IN A VISE
TO KEEP HOUSING SEATED AGAINST LOCATOR TOOL.

