

CABLE ASSEMBLY PROCEDURE

P/N 22-1265-1418

PAGE 1 OF 1 DATE: 02/25/03

DRAWN: YT APPROVED: HN

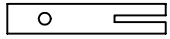
FOR USE WITH RG-402 CABLE

# PALEO CONNECTOR

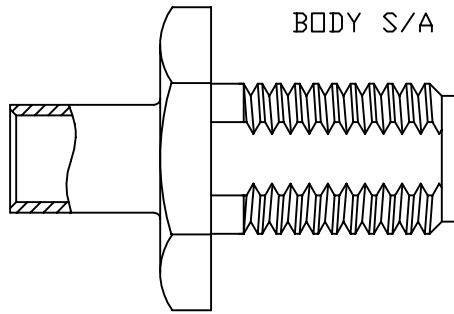
22 GREAT HILL ROAD, NAUGATUCK, CT. 06770  
 PHONE: (203) 729-9090 FAX: (203) 723-1794

REV	DESCRIPTION	DATE	APPR
A	REL. ECN 6912	02/26/03	HN

CONTACT

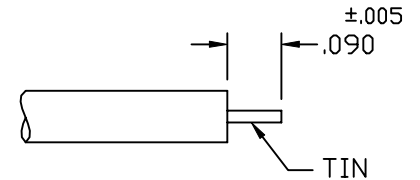


BODY S/A



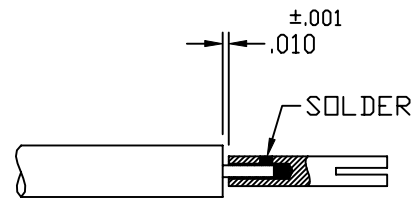
**STEP 1**

TRIM CABLE TO DIMENSIONS SHOWN.  
 TIN CENTER CONDUCTOR.



**STEP 2**

SOLDER CENTER CONTACT TO  
 CENTER CONDUCTOR AS SHOWN USING .010±.001 SHIM.  
 CLEAN SOLDER JOINT.



**STEP 3**

PLACE LOOSE ASSEMBLY IN FIXTURE BASE AS SHOWN.  
 TIGHTEN CLAMP SCREW TO SECURE CABLE.  
 TIGHTEN LOCATOR TOOL TO SEAT CABLE FIRMLY.  
 MAINTAIN POSITION OF HOUSING FIRMLY AGAINST LOCATOR TOOL  
 AND SOLDER CABLE JACKET TO BODY.  
 AVOID EXCESSIVE HEAT. CLEAN SOLDERED AREA.  
 NOTE: FIXTURE SHOULD BE CLAMPED VERTICAL IN A VISE  
 TO KEEP HOUSING SEATED AGAINST LOCATOR TOOL.

