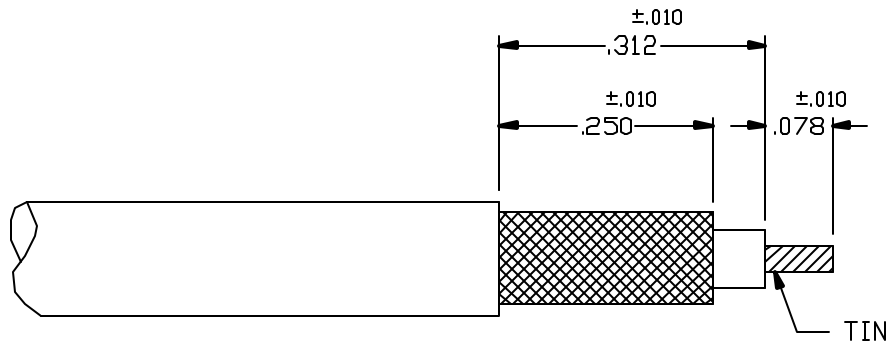
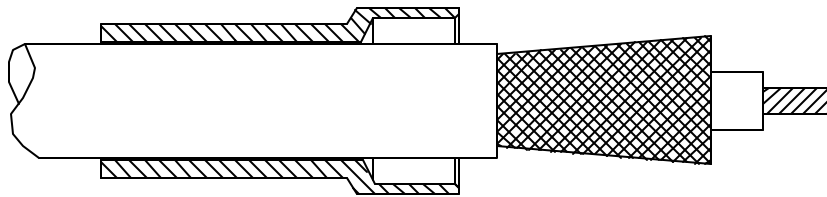


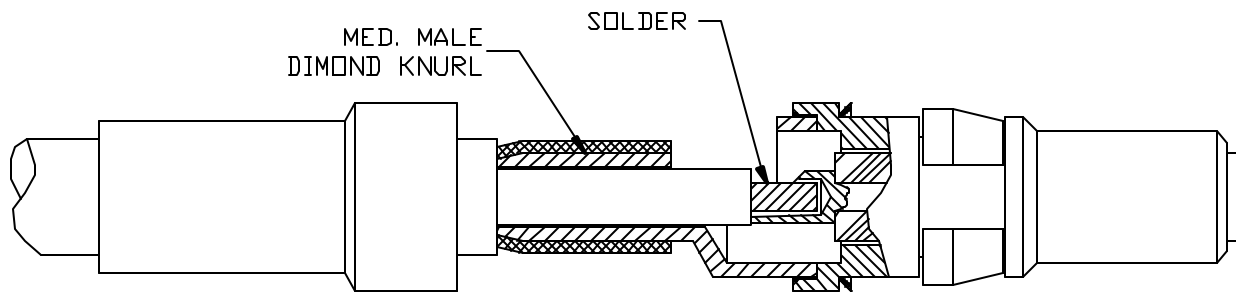
CABLE ASSEMBLY PROCEDURE		<p style="text-align: center;">PALEO</p> <p style="text-align: center;">CONNECTOR</p> <p>22 GREAT HILL ROAD, NAUGATUCK, CT. 06770 PHONE: (203) 729-9090 FAX: (203) 723-1794</p>	REV	DESCRIPTION	DATE	APPR
P/N	24-0080-0400		F	PER ECN 6346	12/19/01	HN
PAGE 1 OF 1	DATE: 12/19/01		G	PER ECN 6388	02/15/02	HN
DRAWN: MY	APPROVED: HN					
FOR USE WITH RG178, 196, SIMILAR CABELS						



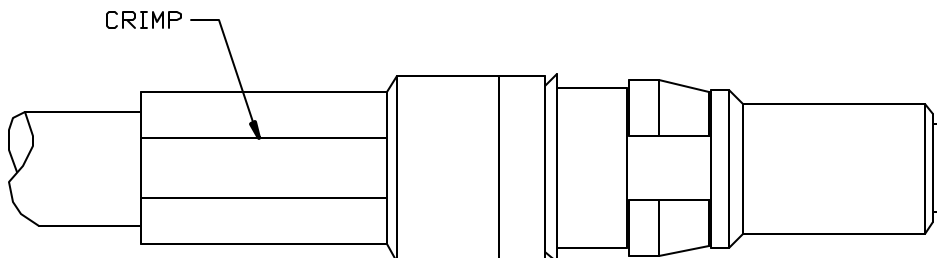
STEP 1. TRIM CABLE TO DIMENSIONS SHOWN. TIN CENTER CONDUCTOR.



STEP 2. SLIDE FERRULE OVER CABLE. FLAIR BRAID BY ROTATING DIELECTRIC.



STEP 3. INSERT CONNECTOR BODY BETWEEN CABLE BRAID AND DIELECTRIC. SOLDER CENTER CONDUCTOR TO CENTER CONTACT. CLEAN



STEP 4. SLIDE FERRULE OVER BRAID TO BODY SHOULDER. CRIMP USING .105 HEX DIE (M22520/5-03).