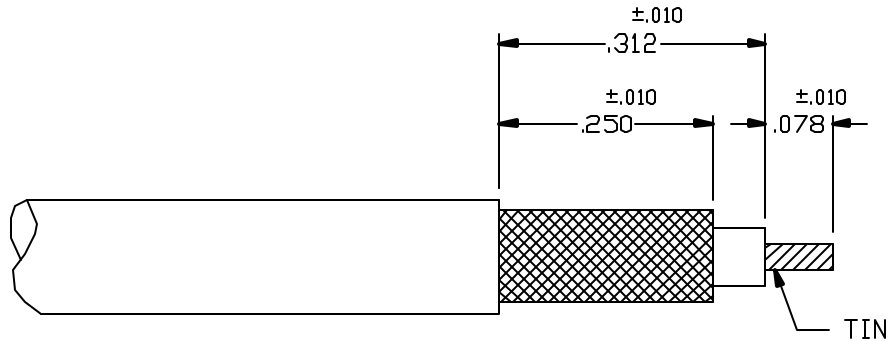
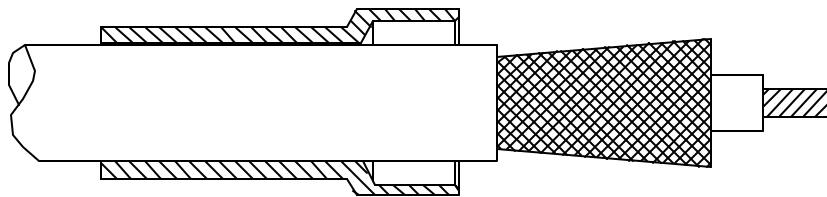


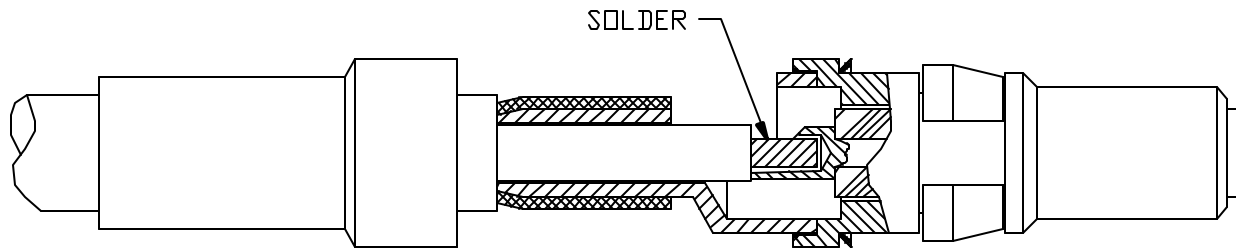
CABLE ASSEMBLY PROCEDURE		 22 GREAT HILL ROAD, NAUGATUCK, CT. 06770 PHONE: (203) 729-9090 FAX: (203) 723-1794	REV	DESCRIPTION	DATE	APPR
P/N	24-0080-0670		F	PER ECN 5351	01/31/00	HN
PAGE 1 OF 1	DATE: 01/31/00		G	PER ECN 5566	8/15/00	HN
DRAWN: MY	APPROVED: HN		H	PER ECN 5584	8/28/00	HN
FOR USE WITH RG316 OR SIMILAR CABELS			I	PER ECN 5595	9/6/00	HN



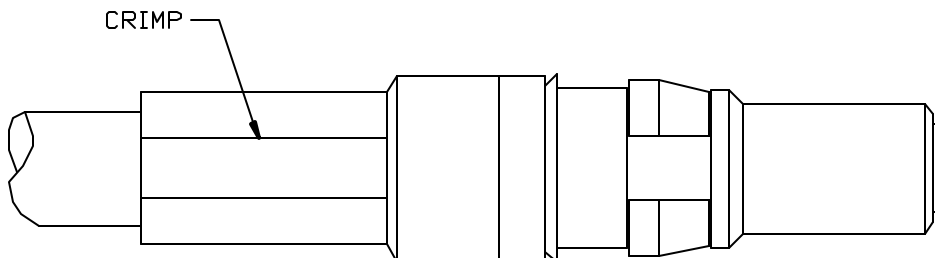
STEP 1. TRIM CABLE TO DIMENSIONS SHOWN. TIN CENTER CONDUCTOR.



STEP 2. SLIDE FERRULE OVER CABLE. FLAIR BRAID BY ROTATING DIELECTRIC.



STEP 3. INSERT CONNECTOR BODY BETWEEN CABLE BRAID AND DIELECTRIC. SOLDER CENTER CONDUCTOR TO CENTER CONTACT. CLEAN



STEP 4. SLIDE FERRULE OVER BRAID TO BODY SHOULDER. CRIMP USING .128 HEX DIE (M22520/5-03).