

CABLE ASSEMBLY PROCEDURE

P/N 24-1080-0670

PAGE 1 OF 1 DATE: 03/08/95

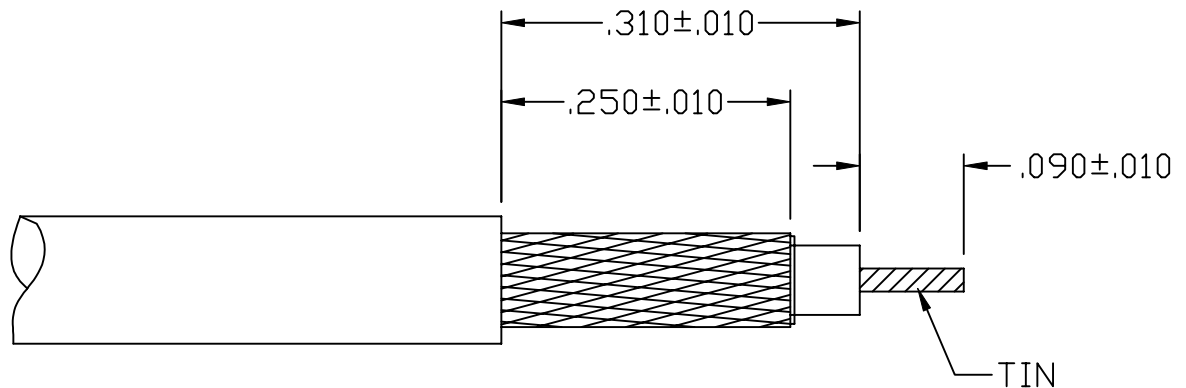
DRAWN: DL APPROVED: HN

FOR USE WITH RG 316 OR SIMILAR CABLES

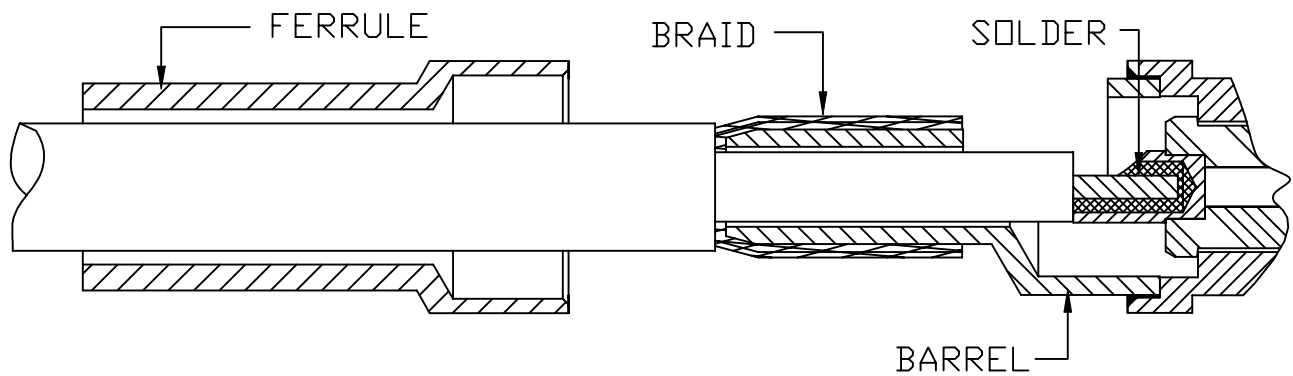
PALEO CONNECTOR

22 GREAT HILL ROAD, NAUGATUCK, CT. 06770
 PHONE: (203) 729-9090 FAX: (203) 723-1794

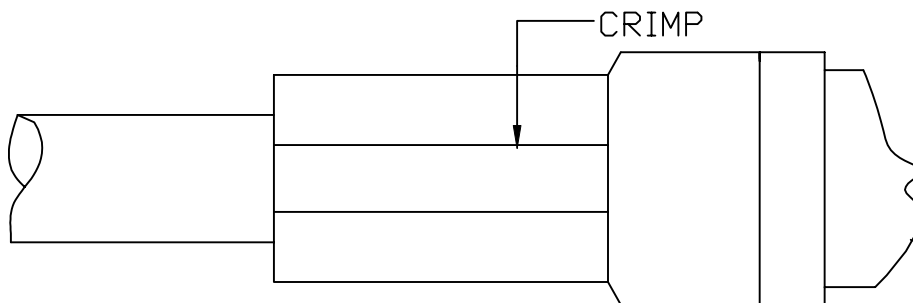
REV	DESCRIPTION	DATE	APPR
A	PER ECN 2789	03/08/95	HN
E	PER ECN 6095	04/25/01	HN
F	PER ECN 7144	08/15/03	HN



STEP 1. TRIM CABLE TO DIMENSIONS SHOWN. TIN CENTER CONDUCTOR.



STEP 2. SLIDE FERRULE OVER JACKET. FLAIR BRAID BY ROTATING DIELECTRIC. INSERT CABLE, DIELECTRIC, AND CENTER CONDUCTOR INTO BARREL. SOLDER CONTACT TO CENTER CONDUCTOR. CLEAN.



STEP 3. SLIDE FERRULE OVER BRAID TO BODY SHOLDER. CRIMP FERRULE TO CABLE USING .128 HEX DIE SET Y-196 (M22520/5-03).