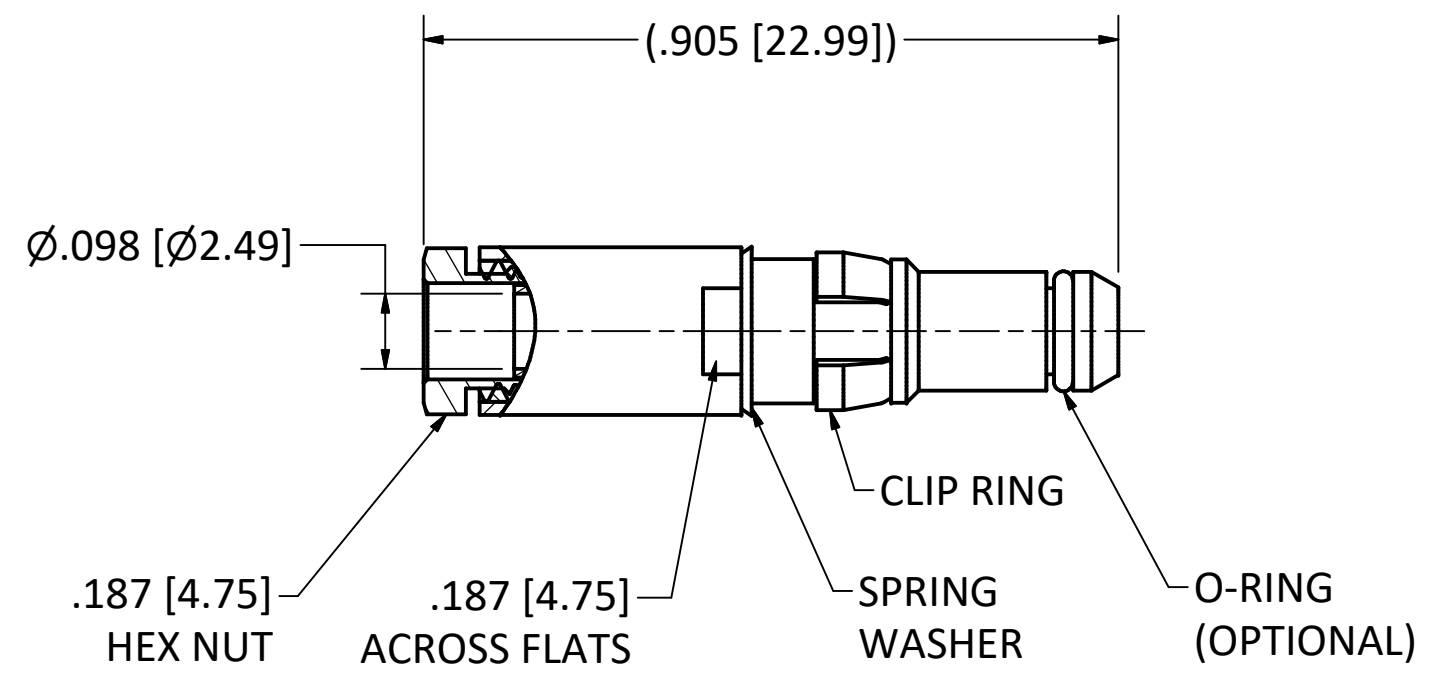
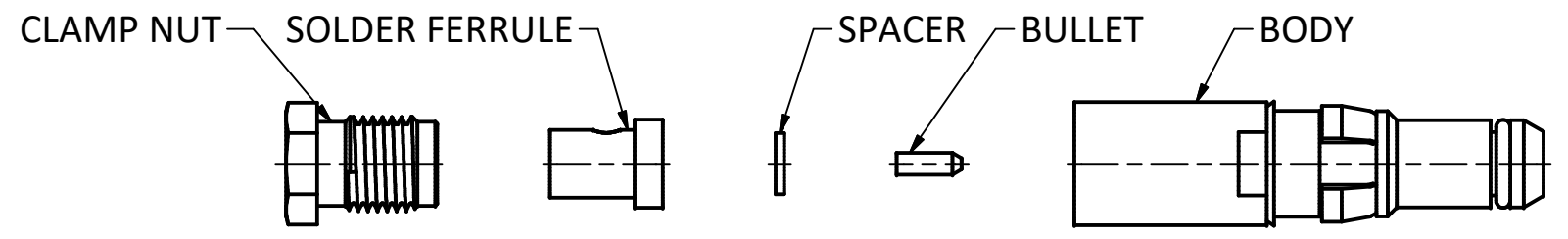
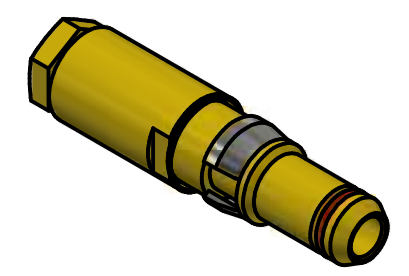


4 | 3 | 2 | 1



NOTES:
 1. SPECIFICATIONS PER IDS-26.
 2. CLAMP NUT, SOLDER FERRULE, BULLET AND SPACER SHIPPED LOOSE.
 3. ACCOMMODATES RG-316 DOUBLE SHIELD (M17/152) CABLE.
HOUSING: D-SUBMINIATURE, SIZE 8 CAVITY.

PART NUMBER	O-RING OPTIONS
26-0030-2670	NONE
26-0031-2670	ENVIRONMENTAL
26-0033-2670	EMI SPRING
26-0035-2670	GROUNDING RING



SCALE 2.5 : 1

REV	DESCRIPTION	DATE	BY
G	ECN 13838	9/15/20	JEM
F	ECN 11007	6/24/11	JEM
E	ECN 10789	12/13/10	JEM
D	ECN 10298	4/21/10	JEM
C	ECN 9524	9/22/08	JEM
B	ECN 7570	8/6/04	JEM

This drawing embodies a proprietary design of The Phoenix Company of Chicago, Inc., Naugatuck, CT 06770. All design, manufacturing, reproduction, use, sale, and other rights regarding the same are expressly reserved. The information in this drawing may be covered completely or in part by patents and/or patents pending.

WARNING - THIS DOCUMENT CONTAINS TECHNICAL DATA WHOSE EXPORT IS RESTRICTED BY THE ARMS EXPORT CONTROL ACT (TITLE 22, U.S.C., SEC 2751, ET. SEQ.) OR THE EXPORT ADMINISTRATION ACT OF 1979, AS AMENDED, TITLE 50, U.S.C., APP 2401 ET SEQ. VIOLATIONS OF THESE EXPORT LAWS ARE SUBJECT TO SEVERE CRIMINAL PENALTIES. DISSEMINATE IN ACCORDANCE WITH PROVISIONS OF DOD DIRECTIVE 5230.25.

Filename: ver2\Autodesk Inventor Data Base\Assemblies\26 Series\26-003X-2670-CU.idw		
UNLESS OTHERWISE SPECIFIED, PHOENIX WORKMANSHIP STANDARDS APPLY DIMENSIONS IN INCHES OR (METRIC) DO NOT SCALE PRINTS TOLERANCES ARE: FRACTIONS: ± 1/64 DECIMALS: .XX ± .01 .XXX ± .003 ANGLES: ± 1/2°	APPROVALS	DATE
	DRAWN EK	4/30/1997
	CHECKED JEM	4/30/1997
	QA	
	MFG	
	ENGINEER EY	4/30/1997
APPROVED JEM	4/30/1997	

The PHOENIX Company of Chicago, Inc.
 22 GREAT HILL RD., NAUGATUCK, CT 06770
 WWW.PHOENIXOFCHICAGO.COM
 PHONE: (800) 323-9562 FAX:(630) 206-1801

TITLE: **PKZ® PLUG, SOLDER/CLAMP TERMINATION**

SIZE B	FSCM 58167	DWG NO 26-003X-2670	REV G	PLATING OPT. A, B, C, D
SCALE 2.5 : 1		F.S.R. #	SHEET 1 OF 1	

4 | 3 | 2 | 1