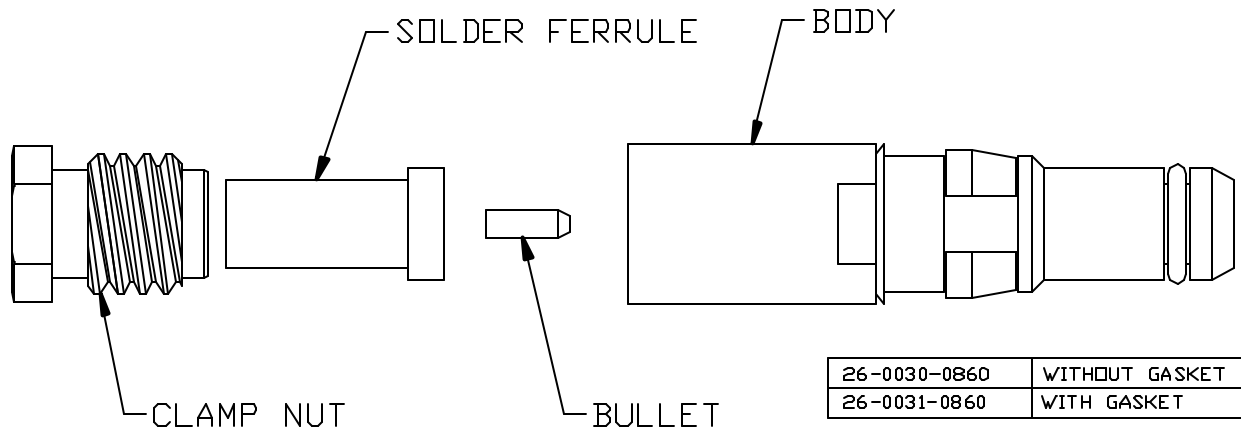


CABLE ASSEMBLY PROCEDURE	
P/N	26-003X-0860
PAGE 1 OF 1	DATE: 07/25/96
DRAWN: MY	APPROVED: HN
FOR RG-405 & T-FLEX 405 CABLE	

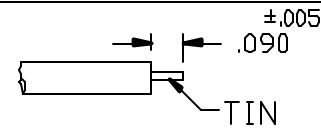
**PALEO**  
**CONNECTOR**

22 GREAT HILL ROAD, NAUGATUCK, CT. 06770  
PHONE: (203) 729-9090 FAX: (203) 723-1794

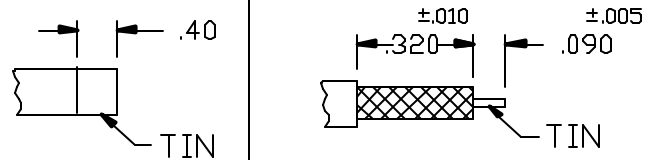
REV	DESCRIPTION	DATE	APPR
0	PER ECN 10110	12/04/09	JEM
P	PER ECN 10187	02/15/10	JEM
R	PER ECN 10683	11/05/10	JEM
S	PER ECN 11004	06/22/11	JEM



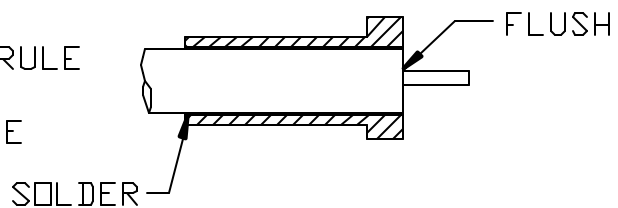
STEP 1 (RG-405 CABLE)  
TRIM CABLE TO DIMENSIONS SHOWN.  
TIN DIP CENTER CONDUCTOR ONLY.



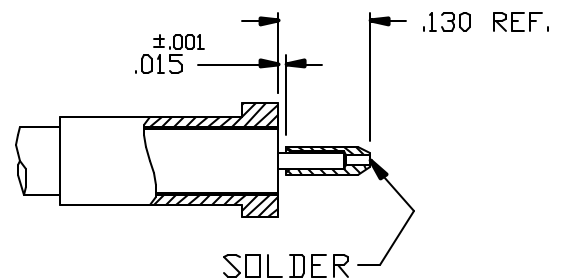
STEP 1 (T-FLEX 405 CABLE)  
TIN DIP CABLE TO DIMENSIONS SHOWN.  
STRIP JACKET TO DIMENSION SHOWN.  
TIN DIP CENTER CONDUCTOR ONLY.



STEP 2  
SLIDE CLAMP NUT AND SOLDER FERRULE  
ONTO CABLE. SET COUNTERBORE IN  
SOLDER FERRULE FLUSH WITH CABLE  
AND SOLDER. CLEAN SOLDER JOINT.  
(TRIM DIELECTRIC IF NECESSARY)



STEP 3  
SLIDE BULLET OVER CENTER  
CONDUCTOR OF CABLE. SOLDER BULLET  
TO CABLE. CLEAN SOLDER JOINT.



STEP 4  
INSERT CABLE ASSEMBLY INTO  
BODY AND TIGHTEN CLAMP  
NUT TO 90-100 IN-OZS. MIN.

