

CABLE ASSEMBLY PROCEDURE	
P/N	26-1020-0860
PAGE 1 OF 2	DATE: 07/29/96
DRAWN: JEM	APPROVED: HN
FOR USE WITH RG-405 S/R CABLE	

PALEO
CONNECTOR

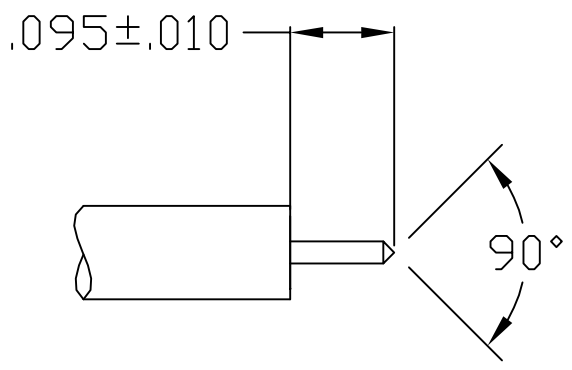
22 GREAT HILL ROAD, NAUGATUCK, CT. 06770
PHONE: (203) 729-9090 FAX: (203) 723-1794

REV	DESCRIPTION	DATE	APPR
D	PER ECN 9763	01/29/09	JEM
E	PER ECN 10499	08/05/10	JEM
F	PER ECN 10524	08/17/10	JEM
G	PER ECN 13757	5/7/20	JEM

.086 S/R CABLE

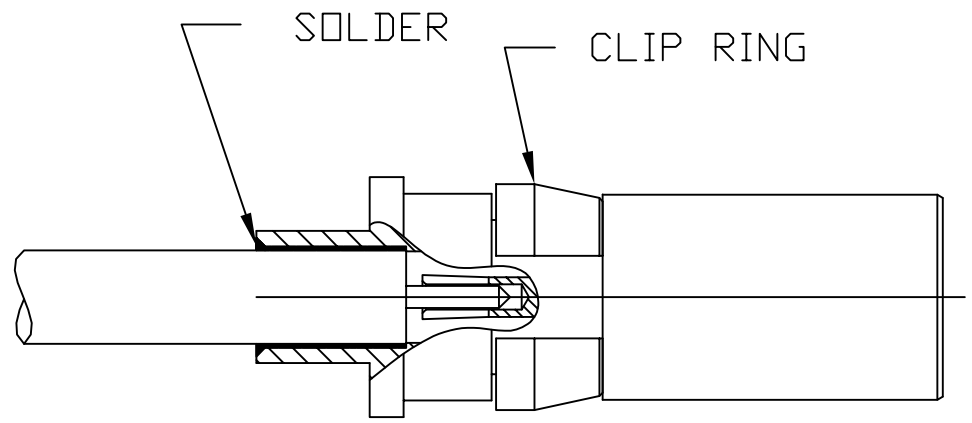
STEP 1

TRIM CABLE TO DIMENSIONS SHOWN.
POINT END AS SHOWN.



STEP 2

INSERT CABLE INTO BODY AND SOLDER
AS SHOWN. CLEAN SOLDER JOINT.



CABLE ASSEMBLY PROCEDURE	
P/N	26-1020-0860
PAGE 2 OF 2	DATE: 11/22/06
DRAWN: YT	APPROVED: JM
FOR USE WITH HARBOUR H7172 CABLE	

PALEO
CONNECTOR

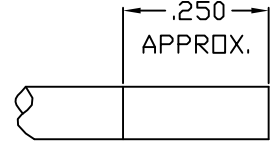
22 GREAT HILL ROAD, NAUGATUCK, CT. 06770
PHONE: (203) 729-9090 FAX: (203) 723-1794

REV	DESCRIPTION	DATE	APPR
D	PER ECN 9763	01/29/09	JEM
E	PER ECN 10499	08/05/10	JEM
F	PER ECN 10524	08/17/10	JEM
G	PER ECN 13757	5/7/20	JEM

HARBOUR H7172 CABLE

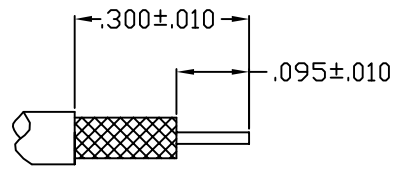
STEP 1

USING FLUX EF-6100 AND SOLDER POT WITH 63/37 SOLDER @ 500°F ±25°F: DIP END OF CABLE INTO FLUX. TIN DIP FLUXED END OF CABLE INTO SOLDER POT TO A DEPTH OF (.250"), FOR A MAXIMUM OF 3 SECONDS



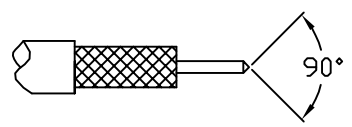
STEP 2

TRIM CABLE TO DIMENSION SHOWN.



STEP 3

POINT END AS SHOWN.



STEP 4

INSERT CABLE INTO BODY AND SOLDER AS SHOWN. CLEAN SOLDER JOINT.

