

CABLE ASSEMBLY PROCEDURE	
P/N	26-1030-0670
PAGE 1 OF 1	DATE: 08/30/00
DRAWN: EK	APPROVED: JEM
FOR RG174, 179, 188 & 316 CABLES	

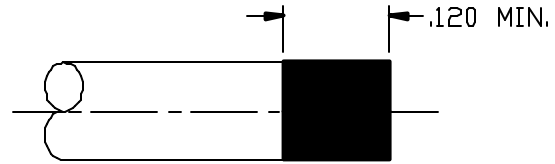
PALEO
CONNECTOR

22 GREAT HILL ROAD, NAUGATUCK, CT. 06770
PHONE: (203) 729-9090 FAX: (203) 723-1794

REV	DESCRIPTION	DATE	APPR
L	PER ECN 9734	01/06/09	JEM
M	PER ECN 10281	04/14/10	JEM
N	PER ECN 10698	11/10/10	JEM
D	PER ECN 11010	06/24/11	JEM

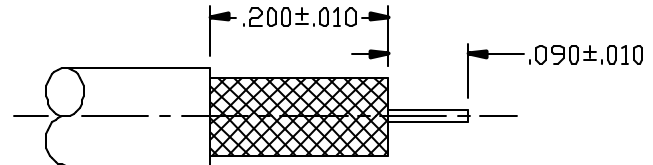
STEP 1

FLUX AND TIN DIP TO DIMENSION SHOWN.



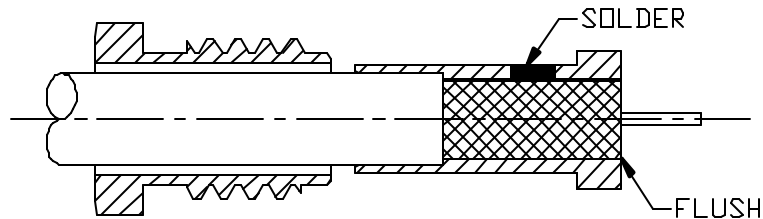
STEP 2

STRIP DIELECTRIC TO EXPOSE CENTER CONDUCTOR. STRIP OUTER JACKET TO EXPOSE BRAID. TIN CENTER CONDUCTOR.



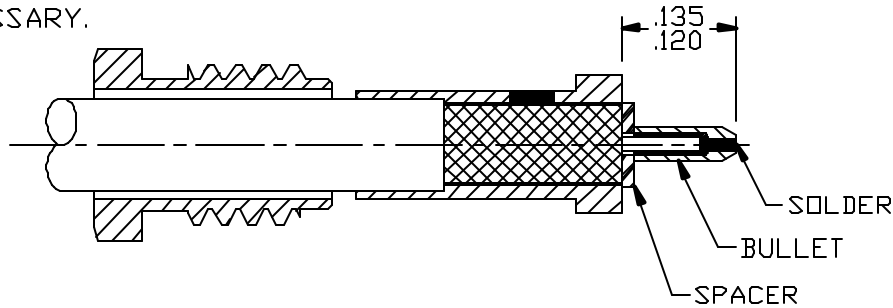
STEP 3

SLIDE CLAMP NUT AND SOLDER FERRULE OVER CABLE. SOLDER FERRULE THROUGH HOLE ON SIDE OF FERRULE. TRIM DIELECTRIC AND BRAID FLUSH TO FERRULE SURFACE IF NECESSARY.



STEP 4

SLIDE SPACER OVER CENTER CONDUCTOR. SOLDER BULLET TO CENTER CONDUCTOR. CLEAN.



STEP 5

INSERT ASSEMBLY INTO CONNECTOR BODY. TIGHTEN CLAMP NUT TO 90-100 IN-OZS.

