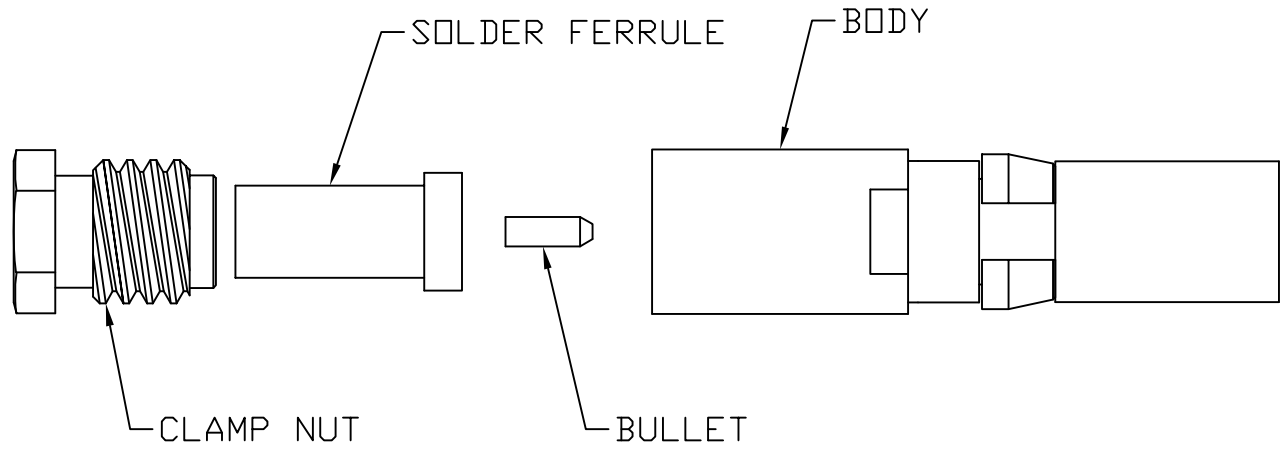


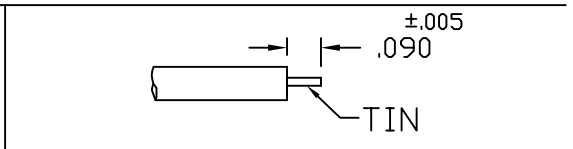
CABLE ASSEMBLY PROCEDURE	
P/N	26-1030-0860
PAGE 1 OF 1	DATE: 01/13/99
DRAWN: YS	APPROVED: HN
FOR RG-405 & T-FLEX 405 CABLE	

The **PHOENIX** Company of Chicago™
 22 GREAT HILL RD., NAUGATUCK, CT 06770
 WWW.PHOENIXOFCHICAGO.COM
 PHONE: (203) 729-9090 FAX: (203) 723-1794

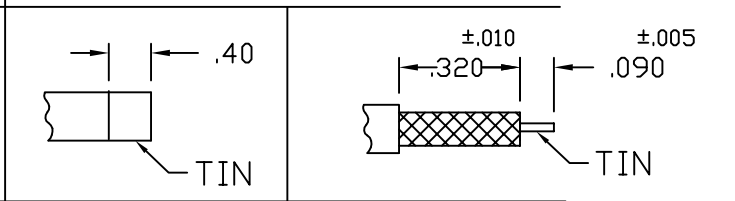
REV	DESCRIPTION	DATE	APPR
P	PER ECN 10226	03/09/10	JEM
R	PER ECN 10687	11/05/10	JEM
S	PER ECN 11011	06/24/11	JEM
T	PER ECN 13607	12/9/19	JEM



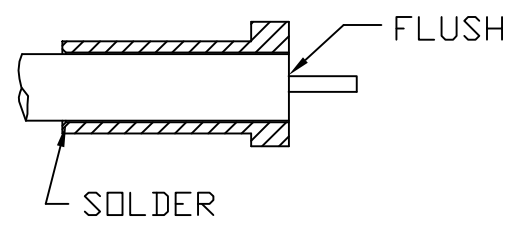
STEP 1 (RG-405 CABLE)
 TRIM CABLE TO DIMENSIONS SHOWN.
 TIN DIP CENTER CONDUCTOR ONLY.



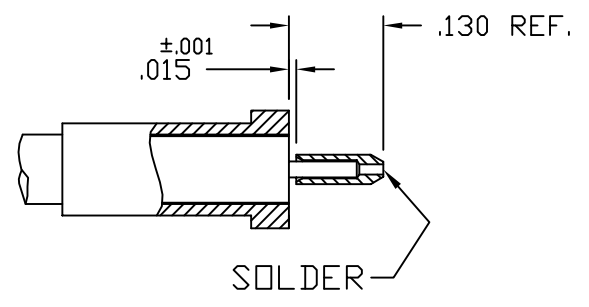
STEP 1 (T-FLEX 405 CABLE)
 TIN DIP CABLE TO DIMENSIONS SHOWN.
 STRIP JACKET TO DIMENSION SHOWN.
 TIN DIP CENTER CONDUCTOR ONLY.



STEP 2
 SLIDE CLAMP NUT AND SOLDER FERRULE
 ONTO CABLE. SET COUNTERBORE IN
 SOLDER FERRULE FLUSH WITH CABLE
 AND SOLDER. CLEAN SOLDER JOINT,
 (TRIM DIELECTRIC IF NECESSARY)



STEP 3
 SLIDE BULLET OVER CENTER
 CONDUCTOR OF CABLE. SOLDER BULLET
 TO CABLE. CLEAN SOLDER JOINT.



STEP 4
 INSERT CABLE ASSEMBLY INTO
 BODY AND TIGHTEN CLAMP
 NUT TO 90-100 IN-OZS.

