

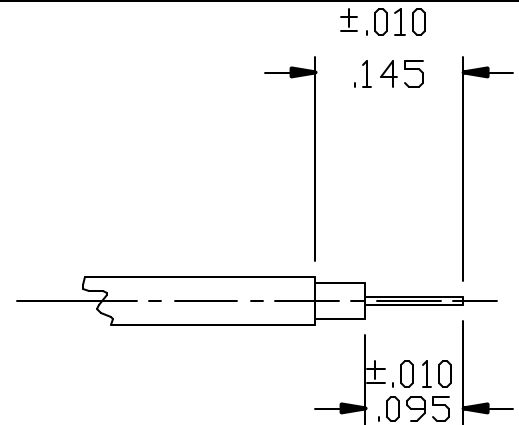
CABLE ASSEMBLY PROCEDURE	
P/N	26-1520-0470
PAGE 1 OF 1	DATE: 07/22/96
DRAWN: MY	APPROVED: HN
FOR USE 0.047 S/R(M17/151)CABLE	

**PALEO**  
**CONNECTOR**

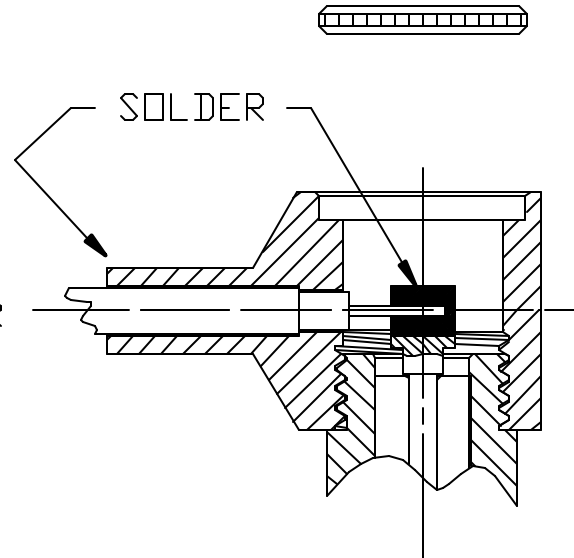
22 GREAT HILL ROAD, NAUGATUCK, CT. 06770  
PHONE: (203) 729-9090 FAX: (203) 723-1794

REV	DESCRIPTION	DATE	APPR
A	PER ECN 3507	07/22/96	HN
F	PER ECN 9528	10/27/08	HN
G	PER ECN 9695	12/09/08	JEM

STEP 1  
TRIM CABLE TO DIMENSIONS SHOWN.  
TIN CENTER CONDUCTOR.



STEP 2  
INSERT CABLE INTO BODY UNTIL  
CABLE BOTTOMS IN BODY. SOLDER  
CABLE JACKET INTO BODY, THEN  
SOLDER CENTER CONDUCTOR TO  
CENTER CONTACT OF CONNECTOR.



STEP 3  
CLEAN AND INSPECT THE SOLDER  
JOINTS. FIXTURE BODY INTO A  
SMALL ARBOR PRESS, BEING CAREFUL  
NOT TO DAMAGE CONNECTOR AND  
PRESS CAP INTO BODY.

