

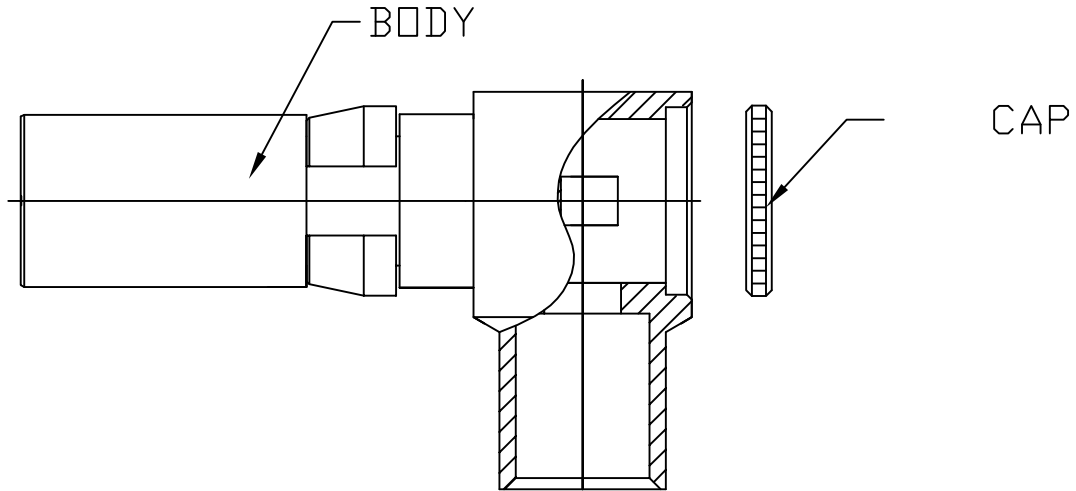
CABLE ASSEMBLY PROCEDURE	
P/N	26-1520-1410
PAGE 1 OF 2	DATE: 07/22/96
DRAWN: JSV	APPROVED: JEM
FOR USE WITH RG-402 S/R CABLE	

PALEO
CONNECTOR

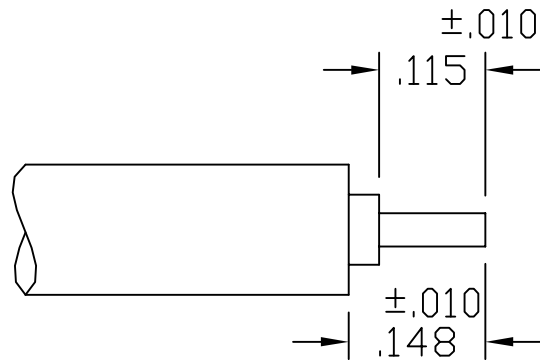
22 GREAT HILL ROAD, NAUGATUCK, CT. 06770
PHONE: (203) 729-9090 FAX: (203) 723-1794

REV	DESCRIPTION	DATE	APPR
J	PER ECN 6600	05/22/06	JEM
K	PER ECN 9694	12/09/08	JEM
L	PER ECN 10296	04/21/10	JEM
M	PER ECN 12570	08/03/17	JEM

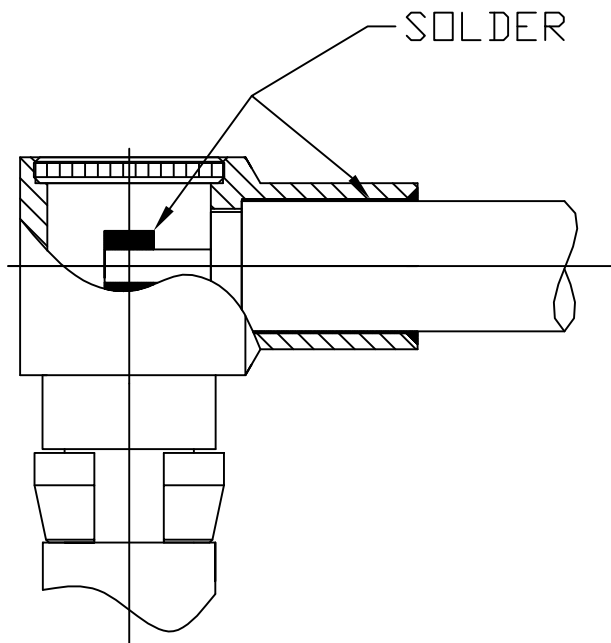
FOR USE WITH RG-402 S/R CABLE



STEP 1
TRIM CABLE TO DIMENSIONS SHOWN.



STEP 2
SLIDE CABLE INTO BACK OF BODY UNTIL CABLE BOTTOMS. SOLDER CABLE TO BODY AND CLEAN SOLDER JOINT.



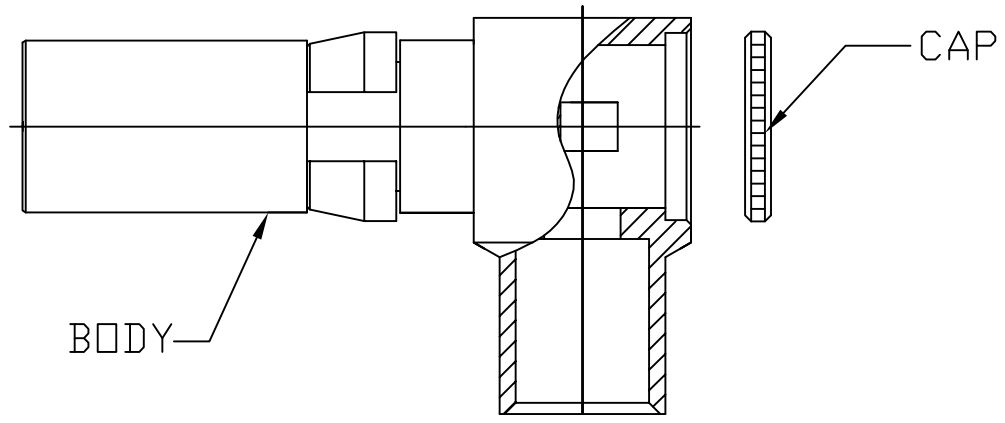
CABLE ASSEMBLY PROCEDURE	
P/N	26-1520-1410
PAGE 2 OF 2	DATE: 05/25/06
DRAWN: EK	APPROVED: JEM
FOR TFLEX-402 CABLE	

PALEO
CONNECTOR

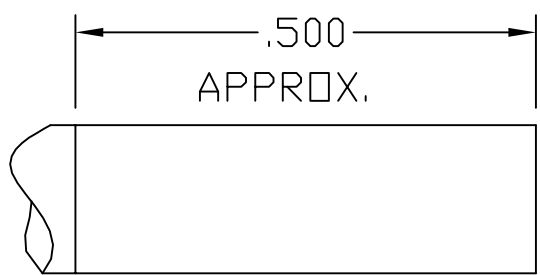
22 GREAT HILL ROAD, NAUGATUCK, CT. 06770
PHONE: (203) 729-9090 FAX: (203) 723-1794

REV	DESCRIPTION	DATE	APPR
J	PER ECN 6600	05/22/06	JEM
K	PER ECN 9694	12/09/08	JEM
L	PER ECN 10296	04/21/10	JEM
M	PER ECN 12570	08/03/17	JEM

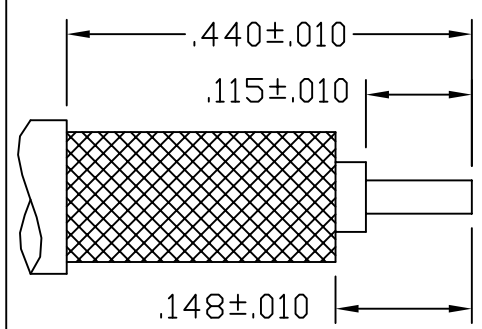
FOR USE WITH T-FLEX 402 CABLE



STEP 1
DIP END OF CABLE INTO FLUX AND THEN TIN DIP CABLE TO DIMENTION SHOWN. USING KESTER 60/40 SOLDER @ 500° F FOR SIX SECONDS MAX.



STEP 2
TRIM CABLE TO DIMENSIONS SHOWN.



STEP 3
SLIDE CABLE INTO BACK OF BODY UNTIL CABLE BOTTOMS. SOLDER CABLE TO BODY AND CLEAN SOLDER JOINT.

