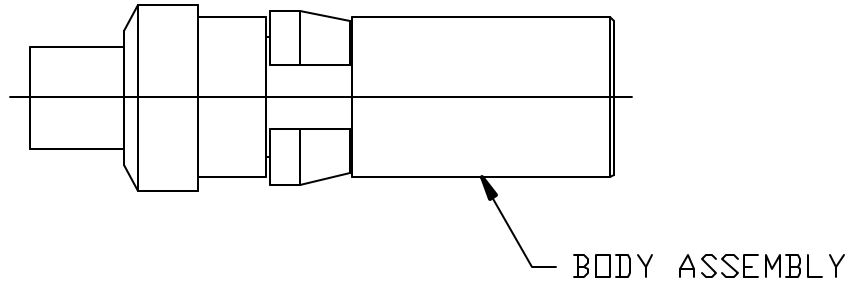
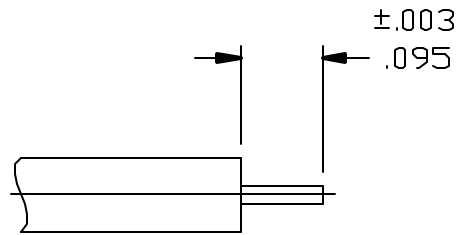


CABLE ASSEMBLY PROCEDURE		PALEO CONNECTOR 22 GREAT HILL ROAD, NAUGATUCK, CT. 06770 PHONE: (203) 729-9090 FAX: (203) 723-1794	REV	DESCRIPTION	DATE	APPR
P/N	26D-1020-0860		A	RELEASED	07/29/96	HN
PAGE 1 OF 1	DATE: 07/29/96					
DRAWN: JEM	APPROVED: HN					
FOR USE WITH RG-405 CABLE						

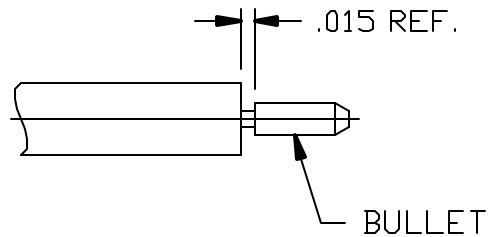


STEP 1
TRIM CABLE TO DIMENSIONS SHOWN.



(THERMO-CYCLE CABLE SUGGESTED BEFORE TRIMMING.)

STEP 2
BOTTOM BULLET ONTO CABLE,
LOCATED AS SHOWN AND SOLDER.



STEP 3
SLIDE CABLE INTO BACK
OF CONNECTOR AND SOLDER.
APPLY HEAT FOR 3-5 SECONDS.

